

Map Introduction: South Uist Map 13

This map section covers part of the north coast of South Uist, to the east of the causeway which connects the island to Benbecula. It extends from Aird Mhor to Creige Loisgte. Modern settlement in this area is sparse and generally set back from the coast. The coast is low lying and rocky.

Of the 13 sites recorded, 1 site was previously known. This site, a chambered cairn (SU7) has already been badly damaged by coastal erosion and is vulnerable to complete destruction. A survey of this site has been recommended. The remainder of the sites within this area are thought to date to the 18th-21st C period, with the exception of one site (SU10), representing structural remains which could not be dated.

The foreshore in this area comprises mainly of sand. The hinterland has drift deposits over visible rock. The coastline is classified as stable, with the exception of the head of an inlet at Grosavagh, which is eroding or stable. The hinterland immediately behind the coast edge lies below 10m OD, but rises up in the interior to between 10m and 20m, on average.

SU 1
NF 82202 44847
Creag Loisgte
House and slipway
18th-21st C AD
Fair
Nil

SU 6
NF 81100 45427
Rubha Ghaisinis
Slipways and structures
18th-21st C AD
Fair
Nil

SU 11
NF 80386 45653
Aird Mhor
Shed and jetty
18th-21st C AD
Fair
Nil

SU 2
NF 81898 44693
Rubh'an Stroim
Structures and slipway
18th-21st C AD
Fair
Nil

SU 7 (NF84NW2)
NF 80979 45468
Rubha Ghaisinis, Carnan,
Sig More
Chambered cairn
4th-3rd Mil BC
Poor
Survey

SU 12
NF 80589 45767
Aird Mhor
Farmstead and jetty
18th-21st C AD
Good
Nil

SU 3
NF 81970 44851
Rubh'an Stroim
Structural remains
18th-21st C AD
Fair
Nil

SU 8
NF 80676 45373
Grosavagh
Structural remains
18th-21st C AD
Poor
Nil

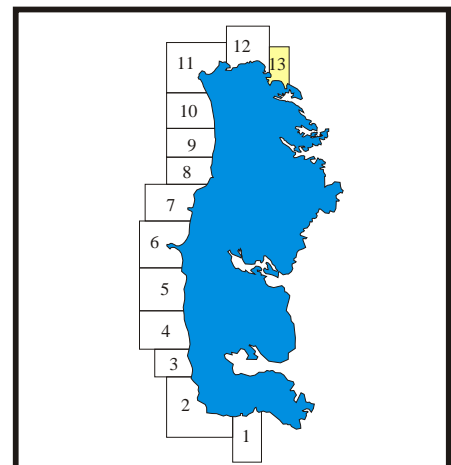
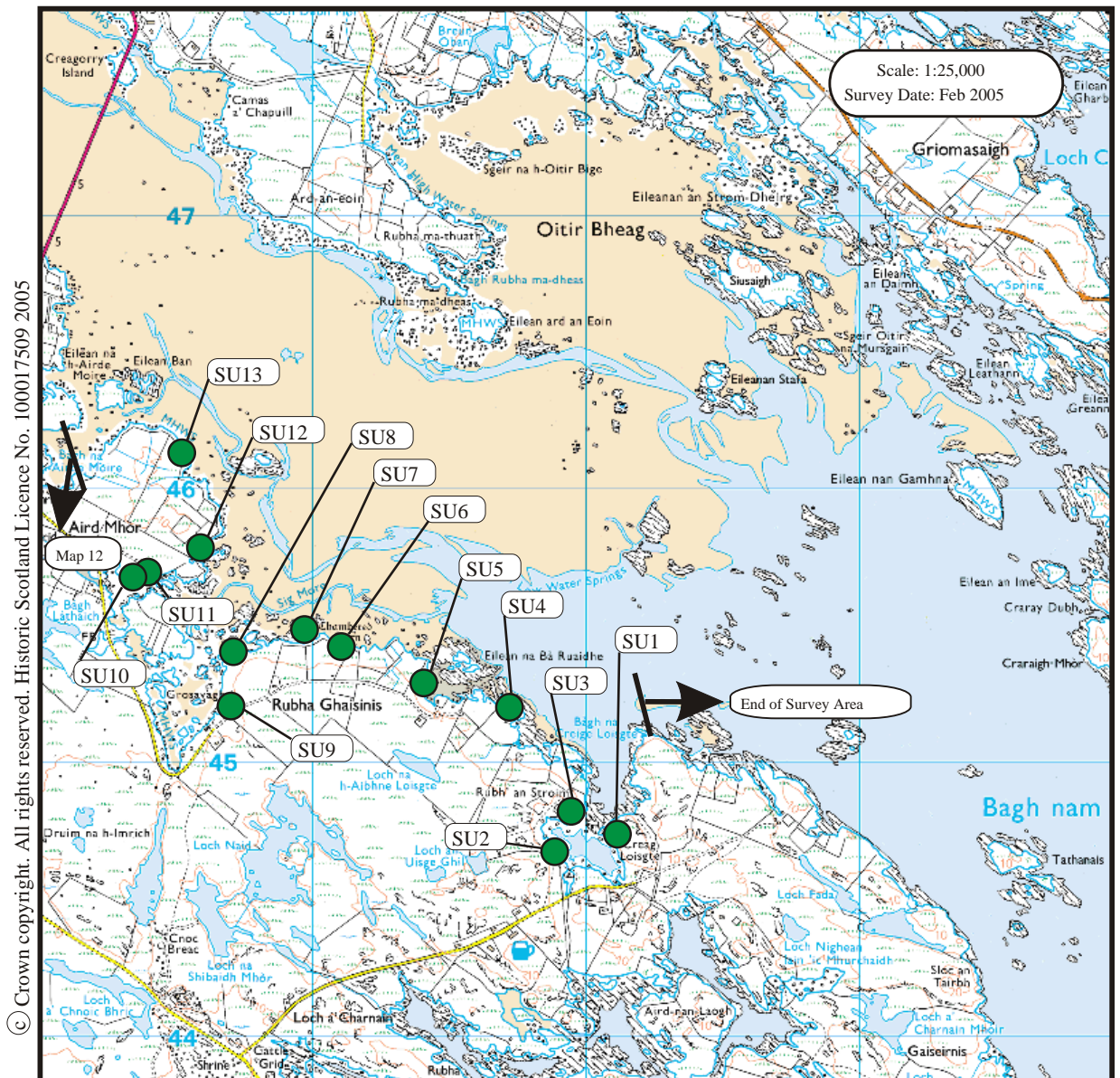
SU 13
NF 80531 46126
Aird Mhor
Farmstead
18th-21st C AD
Fair
Nil

SU 4
NF 81734 45196
Rubha Ghaisinis
House
18th-21st C AD
Good
Nil

SU 9
NF 80678 45235
Grosavagh
Shed and slipway
18th-21st C AD
Fair
Nil

SU 5
NF 81415 45286
Rubha Ghaisinis
Farmstead
18th-21st C AD
Fair
Nil

SU 10
NF 80386 45655
Aird Mhor
Structural remains
Indeterminate
Poor
Monitor



1. Rubha Ghaisinis

NF 811454

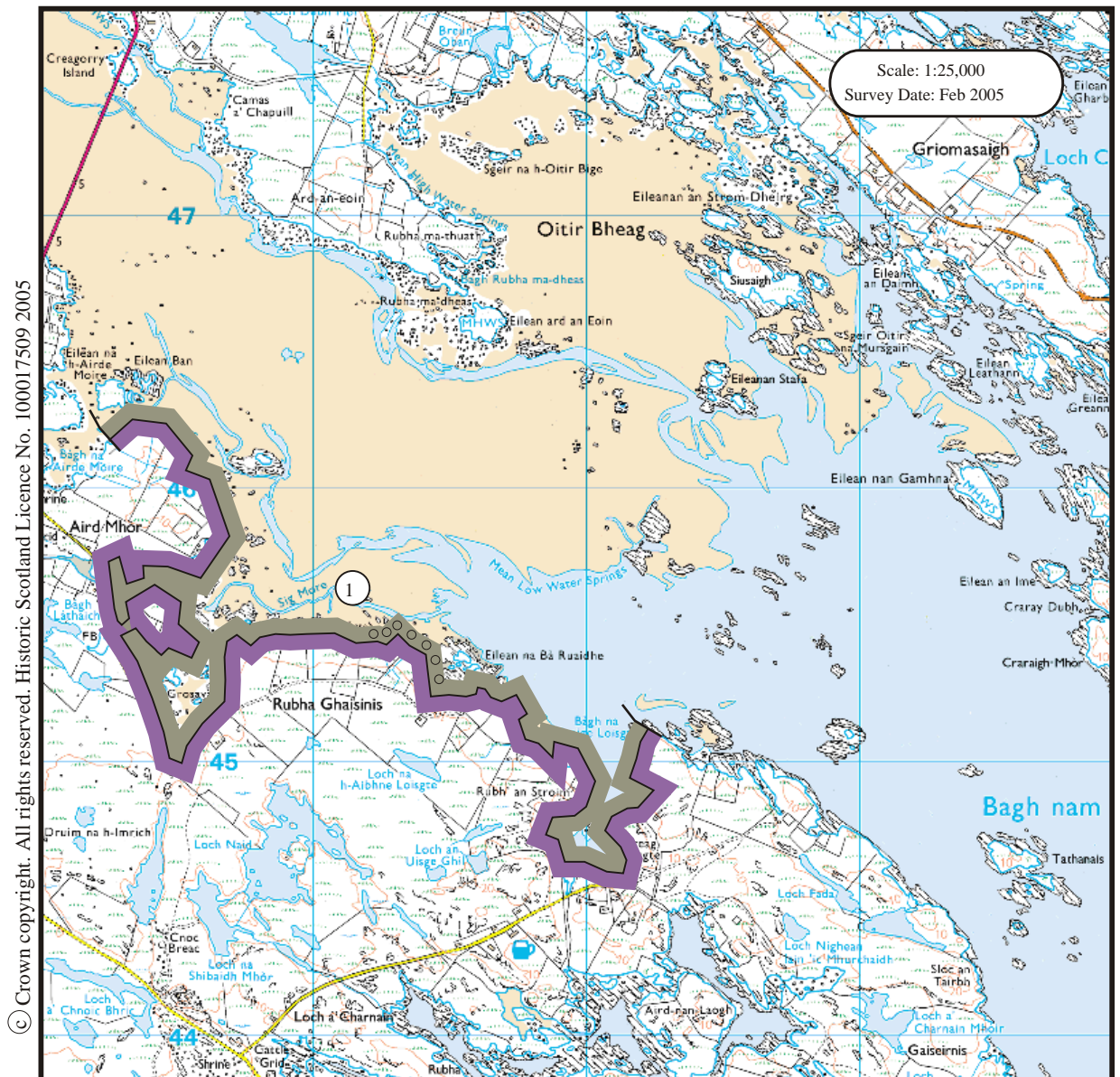
2.35 km

Mainly Sand

Coast edge <5m

Drift on visible rock

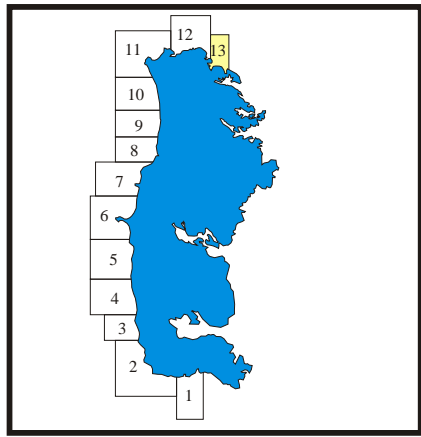
This coastline is characterised by low gneiss ridges and inlets. In all areas the gneiss bedrock is mantled by a thin covered of glacial drift and peat that locally reaches in excess of 2m in thickness. The foreshore is sand and mudflats which are extensive at low tide. Towards Creag Loisgte the foreshore becomes rocky.



- Foreshore**
- Rock platform
 - Mainly sand
 - Mainly alluvial/marine mud
 - Marsh

- Hinterland**
- Drift
 - Drift on visible rock
 - Raised beach etc.
 - Blown sand
 - Glacial sand/gravel
 - Alluvium

- Modifiers**
- Low edge <5m
 - Cliff >5m
 - Man made barrier
 - Shingle/storm bank
 - Human disturbance

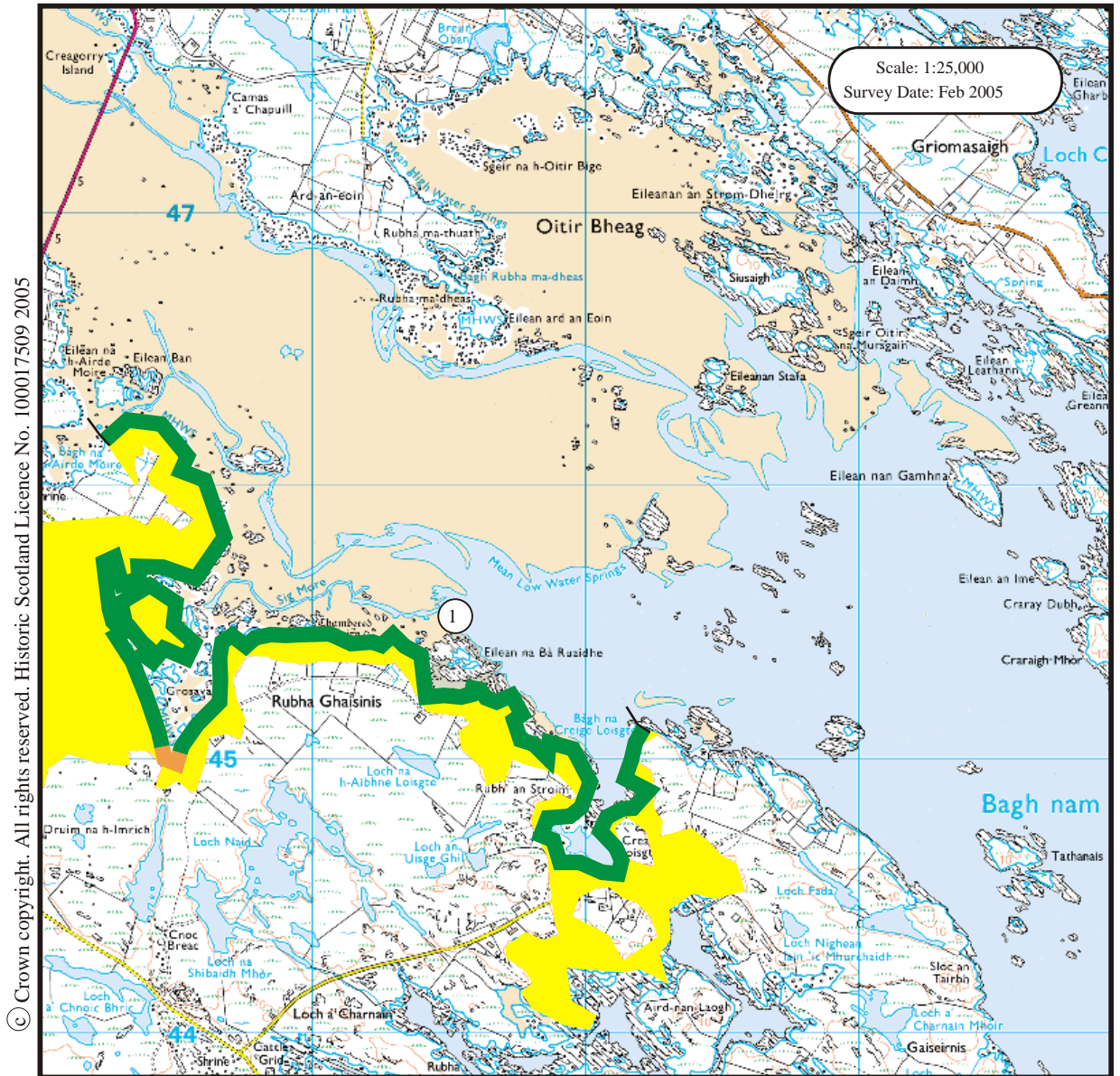


1. Aird Mhor to Creag Loisgte
NF 805460 to NF 823450









3.8 km

Stable

The coastline is everywhere stable except
a) at the head of the inlet Grosavag (NF
805450) where recent erosion of the peat
has resulted in the production of small
cliffs and b) at the head of the inlets SW of
Eilean Ban (NF 800403) where distinct
peat cliffs are also evident. The area is
stable, this almost certainly the result of its
position in the lee (eastern side) of the
causeway.



© Crown copyright. All rights reserved. Historic Scotland Licence No. 100017509 2005

- Erosion Class
-  Definitely Accreting
 -  Accreting or Stable
 -  Stable
 -  Eroding or Stable
 -  Definitely Eroding
 -  Accreting and Eroding
 -  No access
 -  Land below 10m

