

MAP 55: EASTRIGGS TO RIG

Hinterland Geology and Coastal Geomorphology: This section of the coast is dominated by marine sands and gravels over carse clays. The shoreline has been shaped by the channel of the River Esk. Estuary mud and salt-marsh are common along the steep river-edge. The hinterland is extremely flat and lies below 10m O.D.

Erosion Class: The river-edge is eroding at the current HWMS owing to the nature of the geology, and by the abrasive action of the River Eden channel.

Built Heritage & Archaeology: This stretch of the coastline again contains a scattered distribution of fisheries, generally surviving in poor condition. A monitoring programme is strongly recommended for the surviving fisheries of the Solway coast east of the river Annan. A World War 2 pillbox surviving in poor condition on the coastal edge at Torduff Point relates to the munitions factories established around Eastriggs and Gretna in the middle of the Twentieth century. Surveying and monitoring is recommended in regard to this monument.

Map 55: Hinterland Geology and Coastal Geomorphology

DORNOCK BROW FARM to south of BAURCH
HOLDINGS

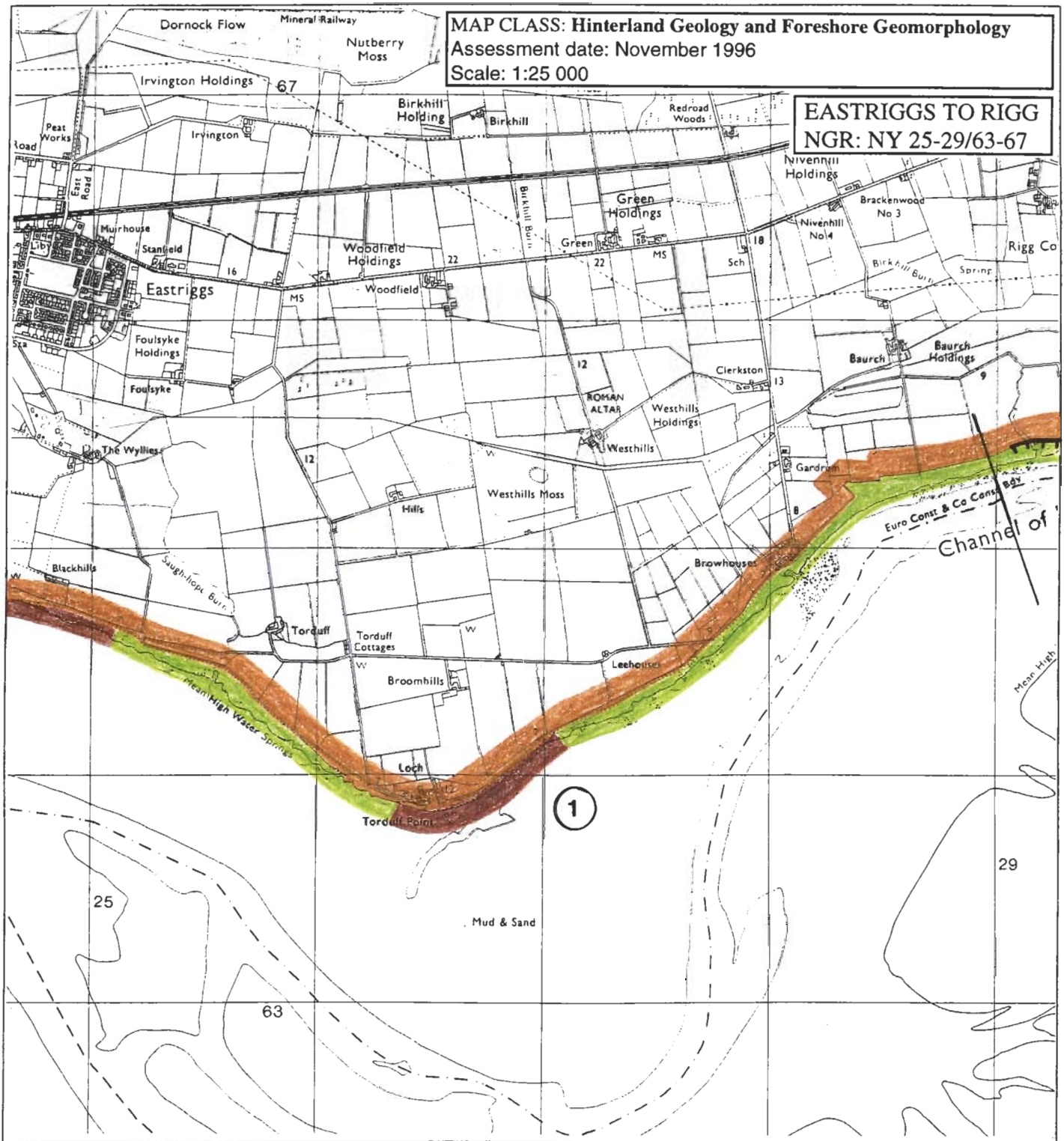
NY 260 640

6km

Low edge (< 5m)

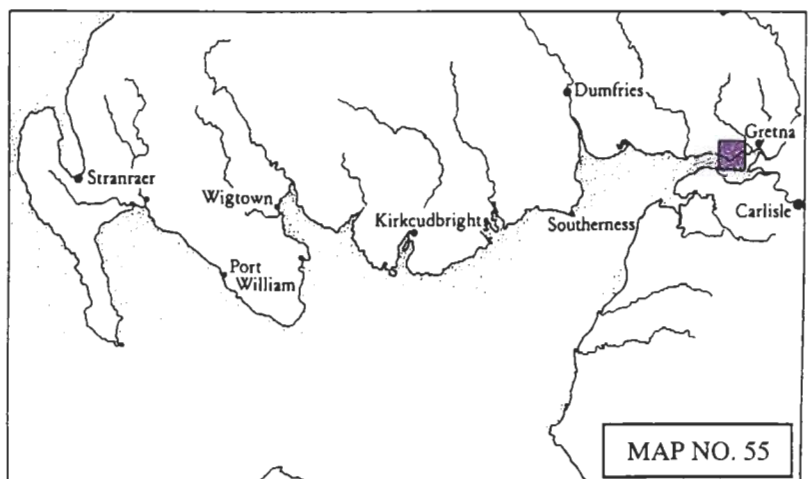
Marine sand and gravels

Marine sands and gravels overlie carse clays. The shoreline is bounded by salt-marsh which overlooks the wide tidal mud-flats of the River Eden.



KEY

Hinterland Geology	Derwent Code	Colour
Drift, boulder clay	French Grey	
Drift, boulder clay over visible rock	Dark Violet	
Raised beach and marine deposits	Golden Brown	
Blown sand	Pink Madder Lake	
Glacial sand and gravel	Magenta	
Alluvium	Emerald Green	
Coastal Geomorphology		
Mainly rock platform	Deep vermilion	
Mainly sand	Ultramarine	
Mainly alluvial/marine mud	Venetian Red	
Marsh	May Green	
Coast Edge		
Low edge (<5m)	Thin black line	
Cliff (>5m)	Solid black line	
Man made barrier	Black line with spines	
Shingle beach	Small circles	
Human disturbance	Black carats	



MAP 55: EROSION

1. TORDUFF POINT east to BROWHOUSES

NY 270 641

2km

Definitely eroding

Retreating coastal edge due to slope failure caused by accelerated mass movement at large spring tides.

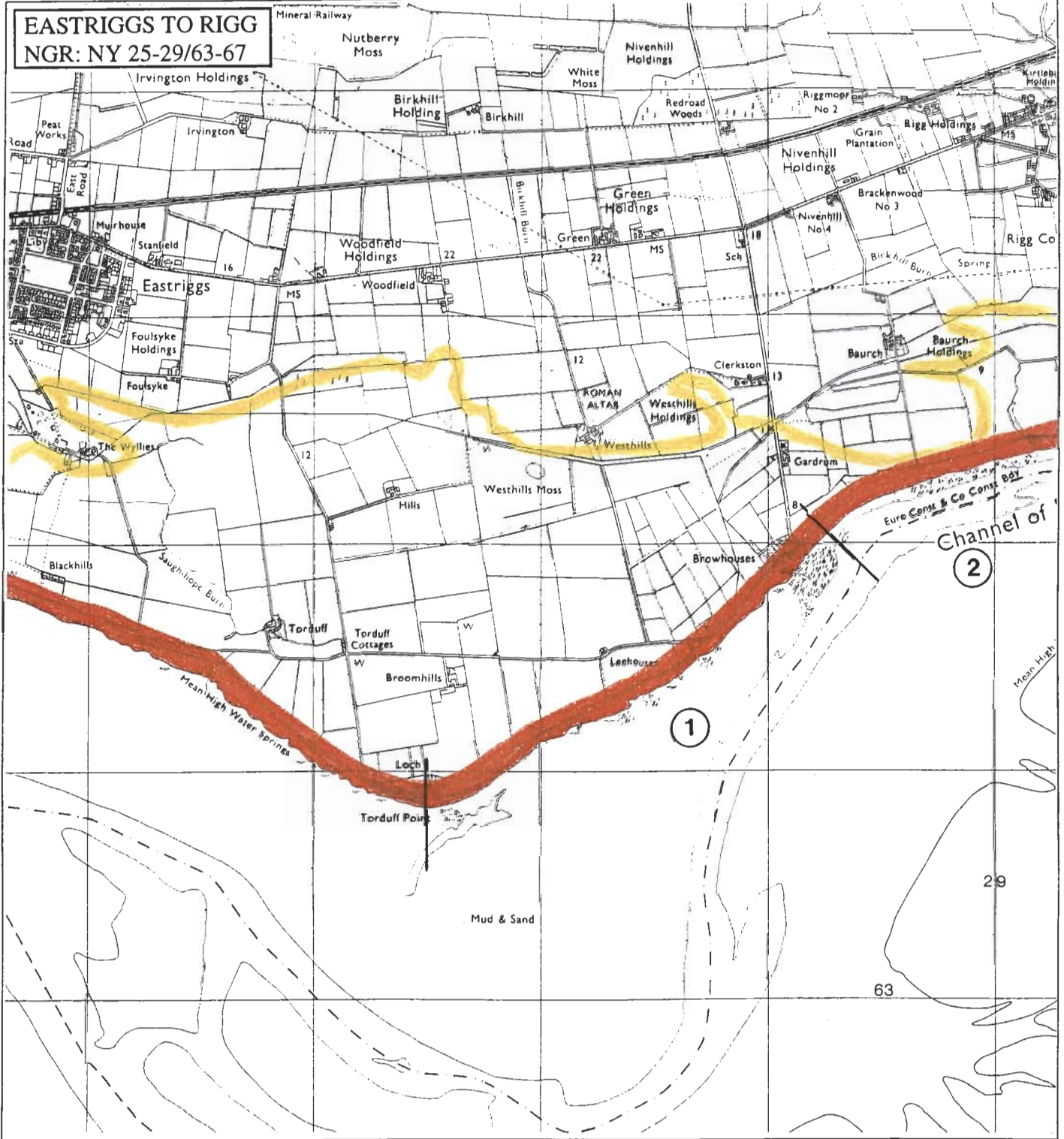
2. BROWHOUSES to REDKIRK POINT

NY 290 654

2km

Definitely eroding

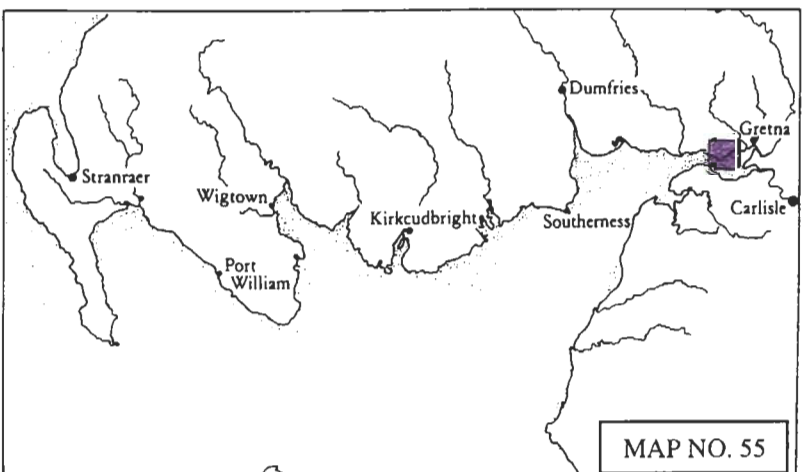
Channel of the River Esk with erosion noted towards Redkirk Point. Boulder dump sea defences are offering some protection to the hinterland but the immediate foreshore is severely scoured due to extreme tidal conditions.



KEY

Erosion class	Derwent Code	Colour
Definitely accreting	Prussian Blue	
Accreting/stable	Light Blue	
Stable	Grass Green	
Stable/eroding	Deep Chrome	
Definitely eroding	Deep Vermilion	
Both accreting and eroding	Imperial Purple	
No access	Blank	
Land below 10m	Straw Yellow	

MAP CLASS: EROSION
 Assessment date: 07.10.96
 Scale 1:25 000



MAP NO. 55

MAP 55: BUILT HERITAGE AND ARCHAEOLOGY

Sites on the Coast Edge & Foreshore

NY 255 644
TORDUFF
FISH TRAPS
Uncertain
Poor
Monitor

NY 257 640
TORDUFF
Fish Traps
Uncertain
Poor
Monitor

NY 2616 6397
TORDUFF POINT
WW2 Pillbox
Mid 20th century
Poor
Survey & Monitor

NY 2676 6395
TORDUFF POINT
Fish Trap
Uncertain
Poor
Monitor

NY 2690 6406
TORDUFF POINT
Fish Trap
Uncertain
Poor
Monitor

NY26SE 4
NY 2810 6486
BROWHOUSES
Landing Place
Uncertain
Poor
Monitor

Sites in the Hinterland

None

MAP CLASS: Built Heritage and Archaeology

Assessment date: October 1996

Scale: 1:25 000

EASTRIGGS TO RIGG

NGR: NY 25-29/63-67



KEY

Site location	Symbol	Colour	Significance
NGR ref. - eg.	Roundel - Solid, (or area)	Red	Protected Ancient Monument
	Cross	Red	Listed Historic Building
NX 143 368	Roundel - Open, (or area)	Red	Monument formally proposed by Historic Scotland for designation
	Roundel - Solid, (or area)	Yellow	Other known Ancient Monument
NMRS ref. - eg.	Dashed outline	Yellow	Gardens/Designed landscape
	Roundel - Solid, (or area)	Yellow	Undesignated wreck
NX13 SW17	Area	Green	Insufficient information; more work needed
	Area	Blue	Probably archaeologically sterile

