

MAP 38: GLEN ISLE TO PARKER'S POOL

Hinterland Geology and Coastal Geomorphology: This area comprises the upper tidal reach of the Urr Water and north towards Dalbeattie. Beyond Palnackie the Urr Water meanders in a series of loops defended by flood defences. Alluvium and riverine silts dominate this section of river valley. Marine sands and gravels are common south of Palnackie showing that marine inundation has occurred, and is possibly associated with the Main Holocene Marine Transgression.

Erosion Class: The lower tidal reach of the Urr Water up towards Dalbeattie is both accreting and eroding. This is confined to the shifting river channel loops. Erosion of the faster river sections (e.g. on the inside of tight bends) is a common trend. From Palnackie to Kipford the Urr Water widens into a larger area incised with small creeks. These are prone to erosion on the whole they are stable owing to salt-marsh vegetation.

Built Heritage & Archaeology: A quay and a motte lie on the banks of the river Urr in this section. The motte is not suffering erosion. The quay at Kirkennan, however, is affected by erosion and monitoring is recommended.

Map 38: Hinterland Geology and Coastal Geomorphology

1. North of GIBB'S HOLE WOOD to GLEN BLACK STONE

NX 830 540

2km

Cliff (<5m)

Till and marine sands

This unit comprises the middle estuary of Rough Firth. Boulder clay and marine sands outcrop at the head of a small bay flanking Isle Point (NX 834546). Northwards, low tidal flats with small migrating channels is bounded by salt-marsh.

2. GLEN BLACK STONE to KIPFORD PIER (via PALNACKIE)

NX 834 560

5km

Low edge (< 5m)

Marine sands and till

This unit includes the lower tidal reach of the Urr Water up to Palnackie. The hinterland consists of marine sands and gravels on both sides of the river, with the exception of till that occurs at Orchard Knowes (NX 836562). Both sides of the river are colonised by salt-marsh vegetation.

3. PALNACKIE to DALBEATTIE

(Both banks of the Urr Water)

NX 830580

8km

Low edge(< 5m)

Alluvium

This unit consist of both sides of the Urr water as far as Dalbeattie. The hinterland geology is alluvium formed within a river valley. The river meanders in a series of gradual loops. The banks are covered with fine silts and mud.

4. KIPFORD to PORTOBEAGLE BAY

NX 844 540

3km

Low edge (< 5m)

Till and marine sands and gravels

Till occurs on the hinterland at Kipford on Scour and at Port Donnel (NX 846537) where it outcrops over visible granite rock. Fluvioglacial drift outcrops to the south. The foreshore consists of a mixture of estuarine sands and mud.

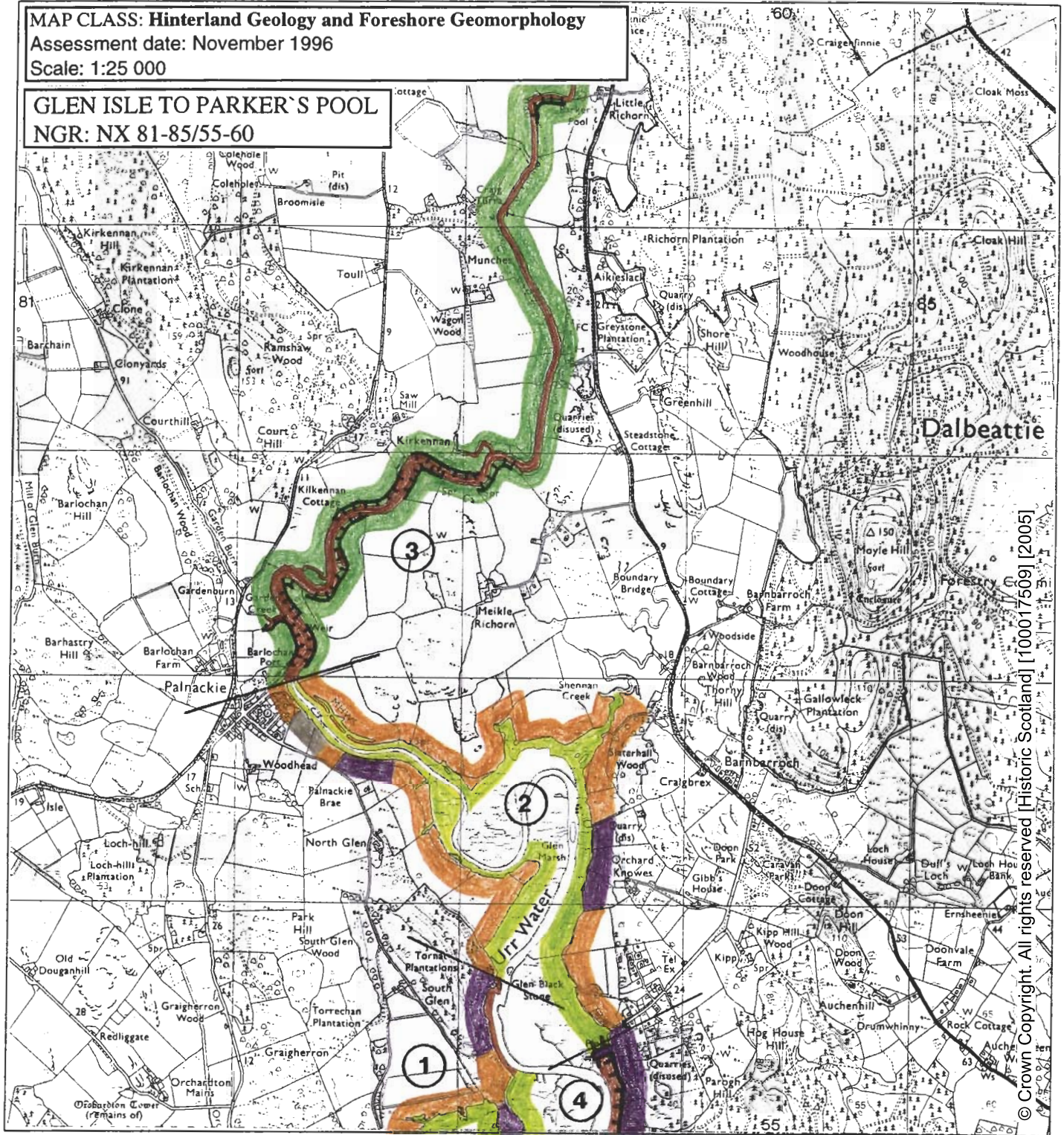
MAP CLASS: Hinterland Geology and Foreshore Geomorphology

Assessment date: November 1996

Scale: 1:25 000

GLEN ISLE TO PARKER'S POOL

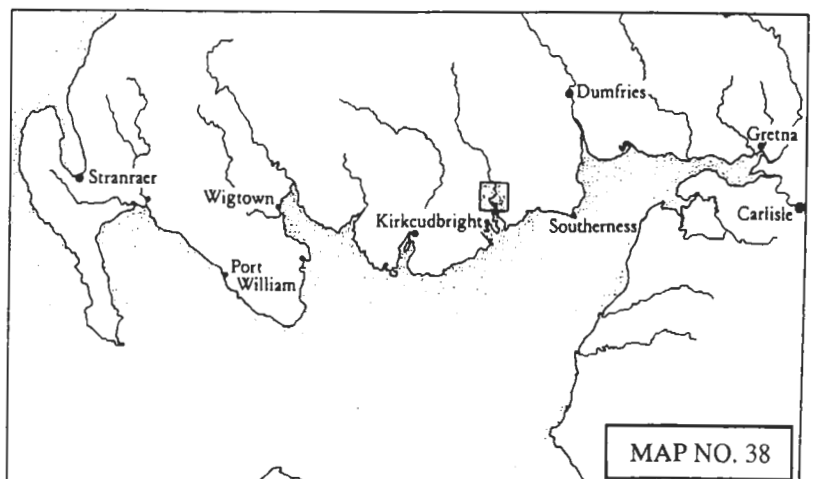
NGR: NX 81-85/55-60



© Crown Copyright. All rights reserved [Historic Scotland] [100017509] [2005]

KEY

Hinterland Geology	Derwent Code	Colour
Drift, boulder clay	French Grey	
Drift, boulder clay over visible rock	Dark Violet	
Raised beach and marine deposits	Golden Brown	
Blown sand	Pink Madder Lake	
Glacial sand and gravel	Magenta	
Alluvium	Emerald Green	
Coastal Geomorphology		
Mainly rock platform	Deep vermilion	
Mainly sand	Ultramarine	
Mainly alluvial/marine mud	Venetian Red	
Marsh	May Green	
Coast Edge		
Low edge (<5m)	Thin black line	
Cliff (>5m)	Solid black line	
Man made barrier	Black line with spines	
Shingle beach	Small circles	
Human disturbance	Black carats	



MAP NO. 38

MAP 38: EROSION

1. PALNACKIE to DALBEATTIE DOCK

NX 826 567

5.5km

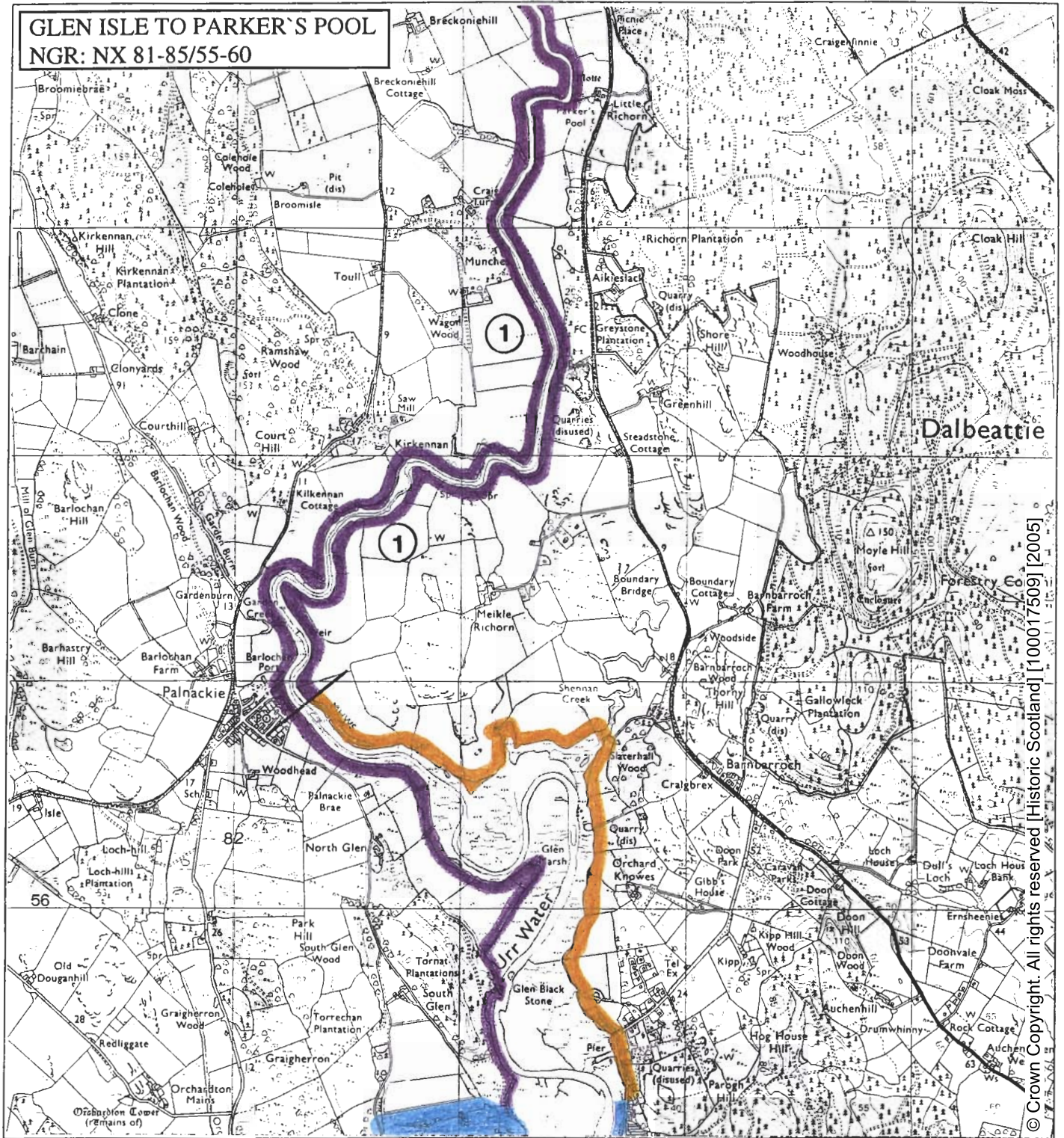
Accreting and eroding

Meandering tidal upper reach of the Urr Water.

Erosion is occurring on the inside of the curves.

Mud accretion is occurring on the slower stretches
of the river.

GLEN ISLE TO PARKER'S POOL
NGR: NX 81-85/55-60



© Crown Copyright. All rights reserved [Historic Scotland] [100017509] [2005]

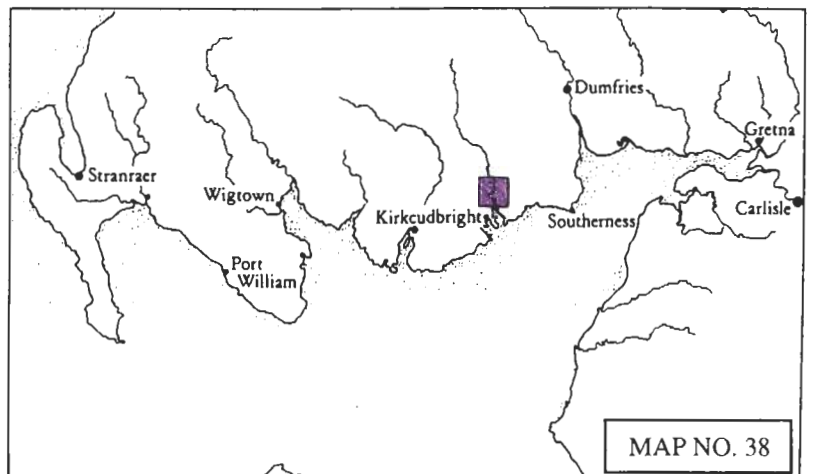
KEY

Erosion class	Derwent Code	Colour
Definitely accreting	Prussian Blue	
Accreting/stable	Light Blue	
Stable	Grass Green	
Stable/eroding	Deep Chrome	
Definitely eroding	Deep Vermilion	
Both accreting and eroding	Imperial Purple	
No access	Blank	
Land below 10m	Straw Yellow	

MAP CLASS: EROSION

Assessment date: 10.10.96

Scale 1:25 000



MAP NO. 38

MAP 38: BUILT HERITAGE AND ARCHAEOLOGY

Sites on the Coast Edge & Foreshore

NX85NW 2
NX 8351 5949
LITTLE RICHORN
Motte
12/13th century
Good
Nil

NX 8338 5818
KIRKENNAN
Quay, Building & Trackway
Uncertain
Fair
Monitor

Sites in the Hinterland

None

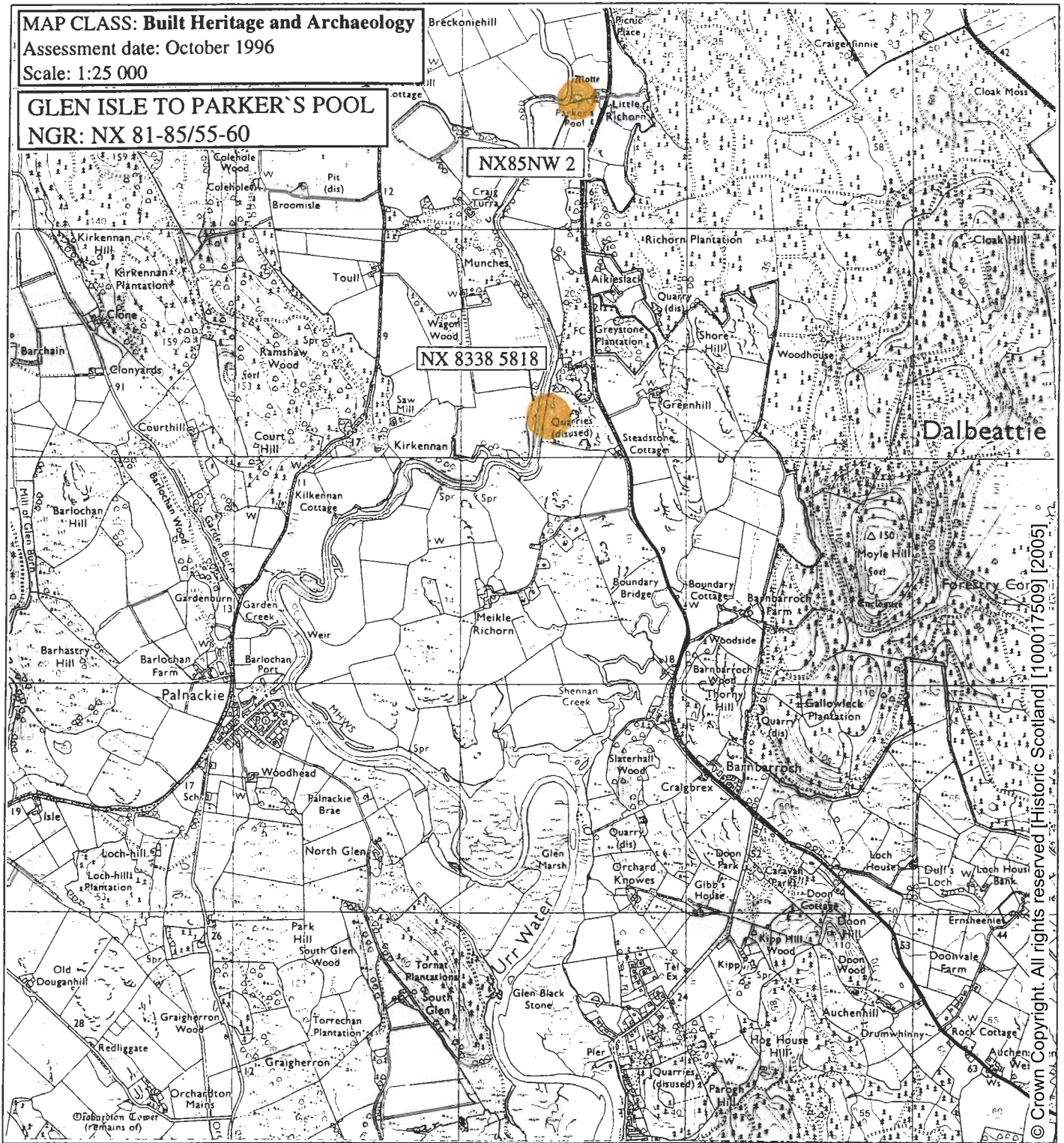
MAP CLASS: Built Heritage and Archaeology

Assessment date: October 1996

Scale: 1:25 000

GLEN ISLE TO PARKER'S POOL

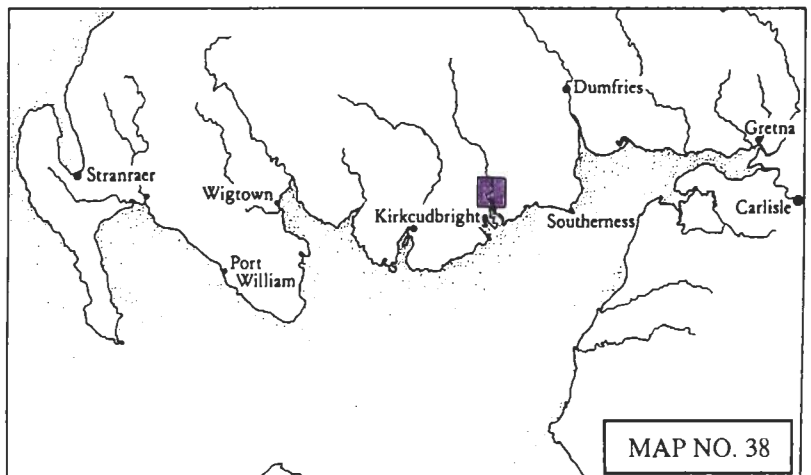
NGR: NX 81-85/55-60



© Crown Copyright. All rights reserved [Historic Scotland] [100017509] [2005]

KEY

Site location	Symbol	Colour	Significance
NGR ref. - eg.	Roundel - Solid, (or area)	Red	Protected Ancient Monument
	Cross	Red	Listed Historic Building
NX 143 368	Roundel - Open, (or area)	Red	Monument formally proposed by Historic Scotland for designation
	Roundel - Solid, (or area)	Yellow	Other known Ancient Monument
NMRS ref. - eg.	Dashed outline	Yellow	Gardens/Designed landscape
	Roundel - Solid, (or area)	Yellow	Undesignated wreck
NX13 SW17	Area	Green	Insufficient information; more work needed
	Area	Blue	Probably archaeologically sterile



MAP NO. 38

