

MAP 32: KIRKUDBRIGHT

Hinterland Geology and Coastal Geomorphology: The map shows the geomorphology alongside the lower tidal reach of the River Dee. The hinterland is dominated by marine deposits. These low shoreline overlooks a meandering river surrounded by salt-marsh and alluvium.

Erosion Class: Salt-marsh is lending stability to the edge of the River Dee and riverine silt is accreting on its banks.

Built Heritage & Archaeology: The town of Kirkcudbright dominates this section; its elements, such as Kirkcudbright Castle, the listed harbour buildings, the shipwrecks in the river Dee and the jetty at Gibbhill-Castledykes Point relate to the role of Kirkcudbright as a port; a role possibly dating from as far back as the Thirteenth century when the invading fleet of Edward 1 established a supply base there, through the eighteenth and nineteenth centuries when the port began to flourish, to the present day where the town survives as one of the few working fishing harbours in the region (Graham & Truckell, 1977, 131-133).

Map 32: Hinterland Geology and Coastal Geomorphology

1. NUN MILL BAY to GIBBHILL POINT

NX 667 499

3km

Low cliff (< 10m)

Till over visible rock

Lower tidal reach of the River Dee with wide low lying mud flats. Alluvial sands and fine mud alongside saltmarsh which bounds the deep river channel. The hinterland consists of till overlying outcropping rock platform.

2. GIBHILL POINT to STABLES COTTAGE via KIRKUDBRIGHT BRIDGE

NX 670 510

5km

Low edge (< 5m)

Marine sands and gravels

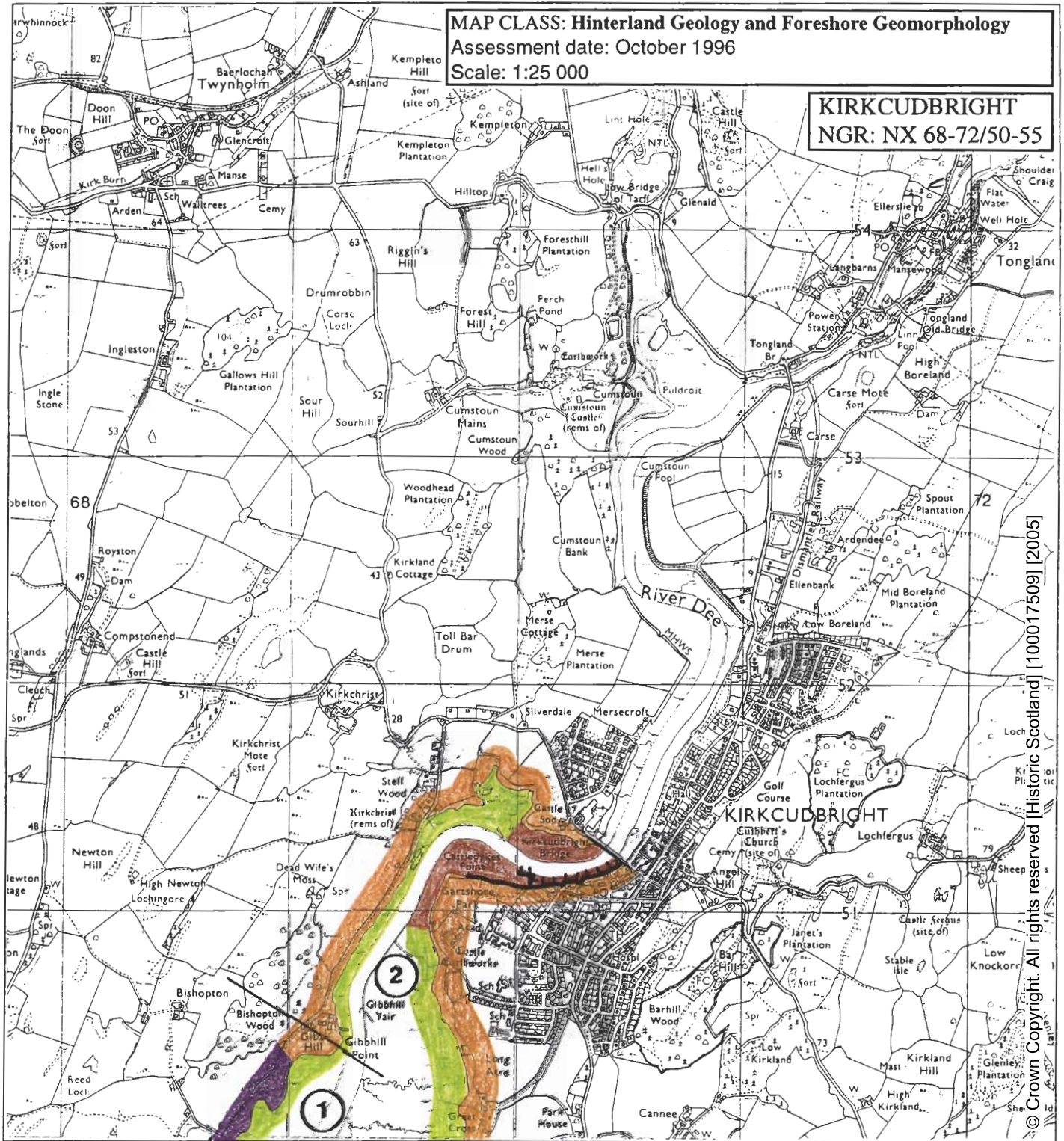
This unit includes the tidal reach of the River Dee where the hinterland is marine sands and gravels. Alluvial mud is present and formed by suspended sediments brought down the river and from outside the estuary. Saltmarsh is dissected by drainage channel at Great Cross (NX 675500).

MAP CLASS: Hinterland Geology and Foreshore Geomorphology

Assessment date: October 1996

Scale: 1:25 000

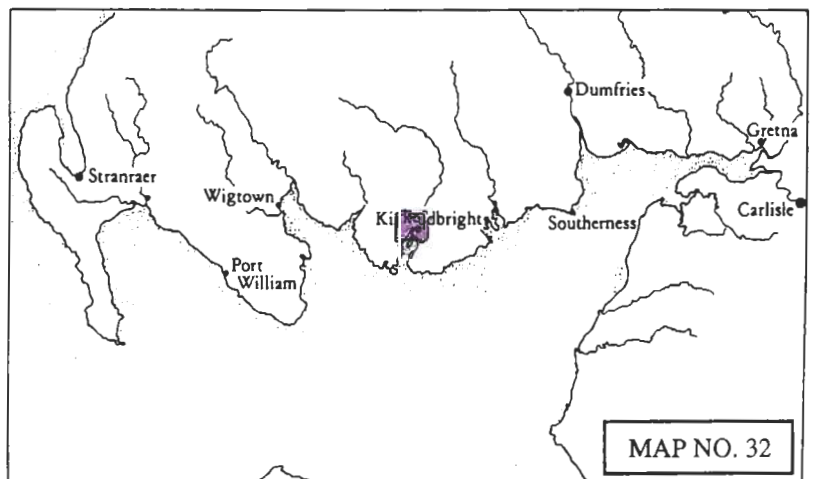
KIRKCUDBRIGHT
NGR: NX 68-72/50-55



© Crown Copyright. All rights reserved [Historic Scotland] [100017509] [2005]

KEY

Hinterland Geology	Derwent Code	Colour
Drift, boulder clay	French Grey	
Drift, boulder clay over visible rock	Dark Violet	
Raised beach and marine deposits	Golden Brown	
Blown sand	Pink Madder Lake	
Glacial sand and gravel	Magenta	
Alluvium	Emerald Green	
Coastal Geomorphology		
Mainly rock platform	Deep vermilion	
Mainly sand	Ultramarine	
Mainly alluvial/marine mud	Venetian Red	
Marsh	May Green	
Coast Edge		
Low edge (<5m)	Thin black line	
Cliff (>5m)	Solid black line	
Man made barrier	Black line with spines	
Shingle beach	Small circles	
Human disturbance	Black carats	



MAP NO. 32

MAP 32: EROSION

**1. SHOULDER O’CRAIG to
KIRKCUDBRIGHT BRIDGE**

NX 674 510

3km

Accreting or stable

This unit includes the lower tidal reach of the River Dee. The shoreline is dominated by saltmarsh and mud flats. The river banks in the region of Castledykes Point (NX 678 512) are accreting with mud due to the high sediment load brought down the River Dee.

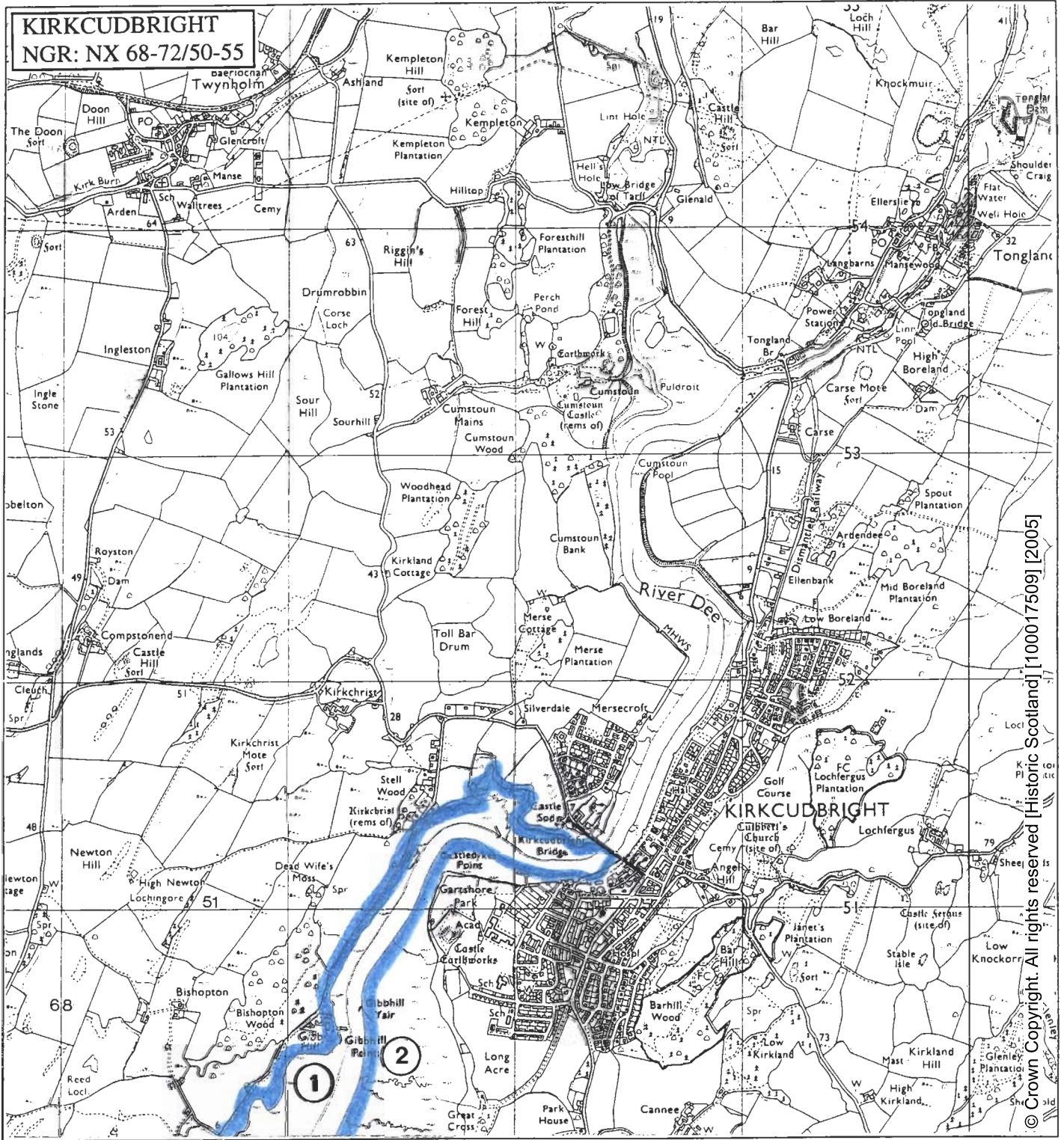
**2. KIRKCUDBRIGHT BRIDGE to south of
SLATE HARBOUR**

NX 678 500

3.5km

Accreting or stable

This unit consists of a regular shoreline with a low lying foreshore dominated by mud and boulders. The high sediment load from the River Dee are leading to accretion on this section of the coast.

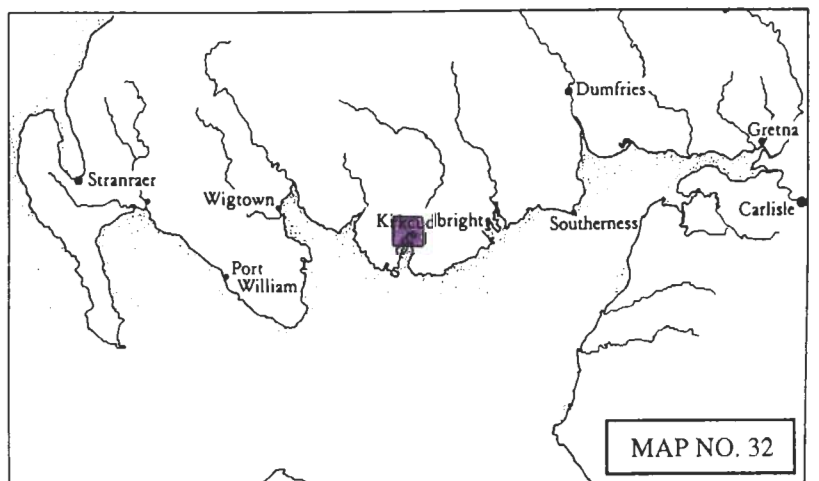


© Crown Copyright. All rights reserved [Historic Scotland] [100017509] [2005]

KEY

Erosion class	Derwent Code	Colour
Definitely accreting	Prussian Blue	
Accreting/stable	Light Blue	
Stable	Grass Green	
Stable/eroding	Deep Chrome	
Definitely eroding	Deep Vermilion	
Both accreting and eroding	Imperial Purple	
No access	Blank	
Land below 10m	Straw Yellow	

MAP CLASS: EROSION
 Assessment date: 04.10.96
 Scale 1:25 000



MAP NO. 32

MAP 32: BUILT HERITAGE AND ARCHAEOLOGY

Sites on the Coast Edge & Foreshore

NX 6732 5055
GIBBHILL - CASTLEDYKES POINT
Shipwreck, Jetty & 'Yair'
Uncertain
Poor
Survey & Monitor

NX 6757 5100
RIVER DEE, KIRKCUDBRIGHT
Shipwreck
Uncertain
Poor
Survey & Monitor

NX 6795 5134
RIVER DEE, KIRKCUDBRIGHT
Yair
Uncertain
Poor
Survey & Monitor

NX 6840 5125
KIRKCUDBRIGHT
Bridge
Statutory Listed Building
Early 20th century
Good
Nil

NX 682 511
CASTLEBANK, KIRKCUDBRIGHT
Harbour Cottage
Statutory Listed Building
Early 19th century
Good
Nil

NX 682 511
KIRKCUDBRIGHT
Harbour Cottage Gallery
Statutory Listed Building
19th century
Good
Nil

Sites in the Hinterland

NX 682 510
MACLELLAN'S CASTLE
KIRKCUDBRIGHT
Castle
Statutory Listed Building
16th century
Good
Nil

NX 682 511
KIRKCUDBRIGHT
Castlebank Shorehouse
Statutory Listed
Building
18th century
Good
Nil

NX 685 510
BROUGHTON
HOUSE
Garden
Early 20th century
Good
Nil

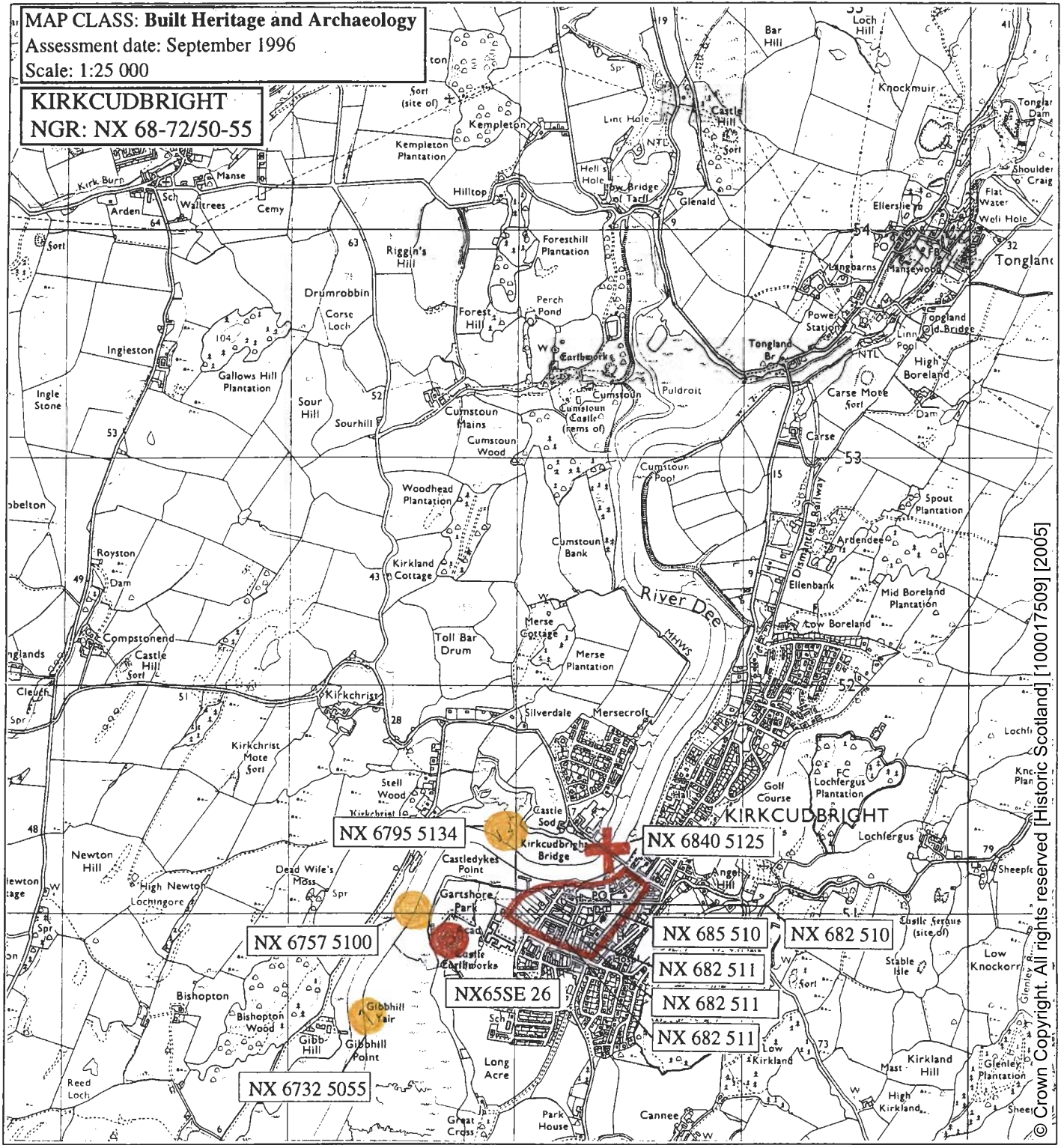
NX65SE 26
NX 6771 5088
KIRKCUDBRIGHT
Kirkcudbright Castle
Scheduled Ancient
Monument
13th century
Good
Nil

MAP CLASS: Built Heritage and Archaeology

Assessment date: September 1996

Scale: 1:25 000

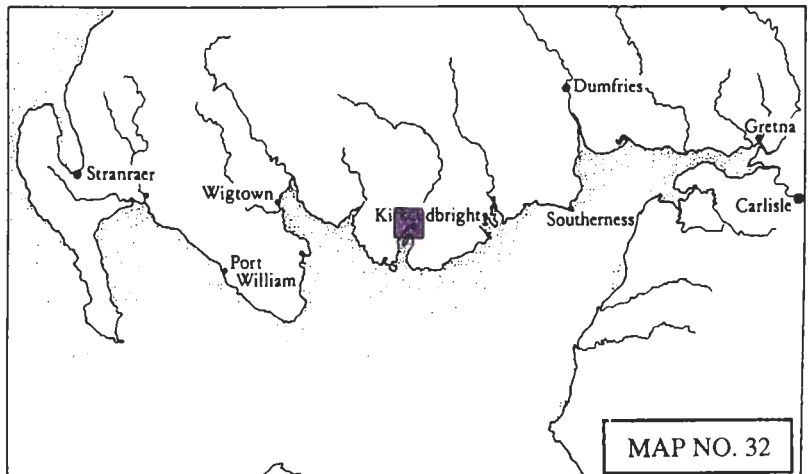
KIRKCUDBRIGHT
NGR: NX 68-72/50-55



© Crown Copyright. All rights reserved [Historic Scotland] [100017509] [2005]

KEY

Site location	Symbol	Colour	Significance
NGR ref. - eg.	Roundel - Solid, (or area)	Red	Protected Ancient Monument
	Cross	Red	Listed Historic Building
NX 143 368	Roundel - Open, (or area)	Red	Monument formally proposed by Historic Scotland for designation
	Roundel - Solid, (or area)	Yellow	Other known Ancient Monument
NMRS ref. - eg.	Dashed outline	Yellow	Gardens/Designed landscape
NX13 SW17	Roundel - Solid, (or area)	Yellow	Undesignated wreck
	Area	Green	Insufficient information; more work needed
	Area	Blue	Probably archaeologically sterile



MAP NO. 32

