

MAP 23: CARSENESTOCK TO NEWTON STEWART

Hinterland Geology and Coastal Geomorphology: The upper tidal reach of the River Cree flows through a flat featureless region of salt-marsh that lies below 5m O.D. The river channel meanders forming a series of large loops and becomes straighter below Newton Stewart. Flood banks protect the so called Loop of Carsenaw which has been reclaimed for pasture. The banks of the river are covered with alluvial silts.

Erosion Class: The same conditions apply to this section of the river as that described for the lower section of the River Cree.

Built Heritage & Archaeology: This section contains only one site, Machermore Castle, originally dating to the seventeenth or eighteenth centuries. It is located inland from the river Cree and is under no threat.

Map 23: Hinterland Geology and Coastal Geomorphology

1. North of GRANGE of CREE to NEWTON STEWART

NX 450 610

10km

Low edge (< 5m)

Saltmarsh and alluvium

Salt-marsh alongside the meandering River Cree.

The river channel has a margin of fine grained alluvium colonised by salt-marsh communities.

2. NEWTON STEWART to KNOCKDOWN FERRY HOUSE

NX 450 625

10km

low edge (< 5m)

Salt-marsh and alluvium

Salt-marsh formed on alluvium bordering a tidal river channel. Fine grained muds occur on the margin of the river channel.

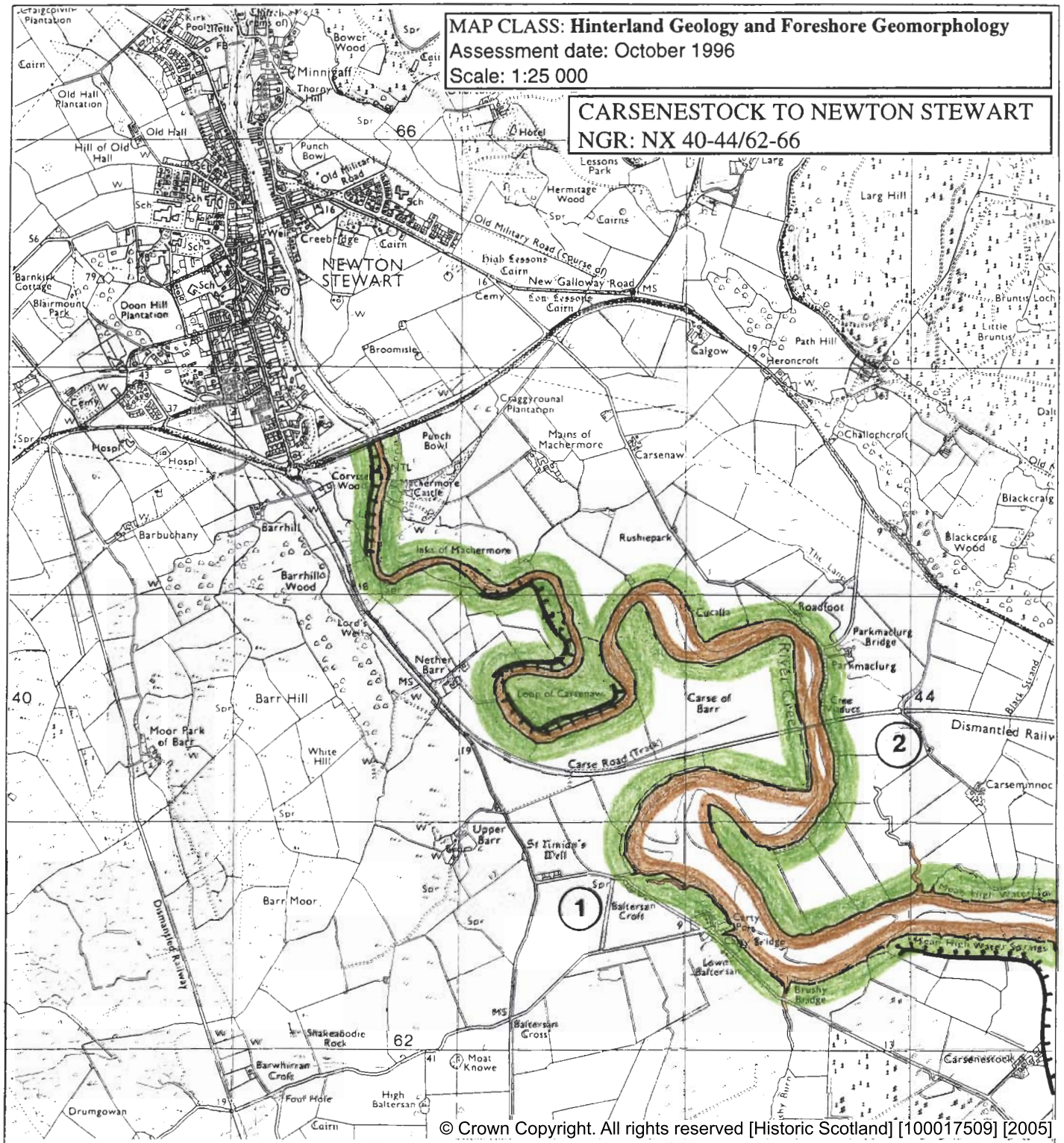
MAP CLASS: Hinterland Geology and Foreshore Geomorphology

Assessment date: October 1996

Scale: 1:25 000

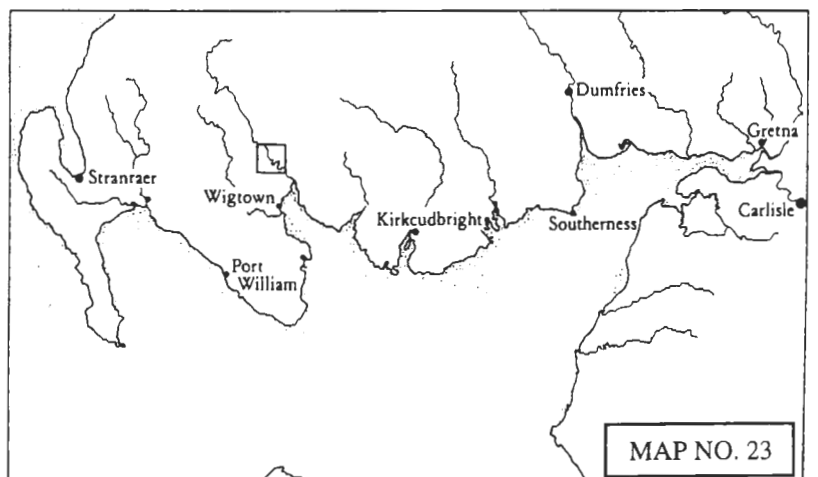
CARSENESTOCK TO NEWTON STEWART

NGR: NX 40-44/62-66



KEY

Hinterland Geology	Derwent Code	Colour
Drift, boulder clay	French Grey	
Drift, boulder clay over visible rock	Dark Violet	
Raised beach and marine deposits	Golden Brown	
Blown sand	Pink Mulder Lake	
Glacial sand and gravel	Magenta	
Alluvium	Emerald Green	
Coastal Geomorphology		
Mainly rock platform	Deep vermilion	
Mainly sand	Ultramarine	
Mainly alluvial/marine mud	Venetian Red	
Marsh	May Green	
Coast Edge		
Low edge (<5m)	Thin black line	
Cliff (>5m)	Solid black line	
Man made barrier	Black line with spines	
Shingle beach	Small circles	
Human disturbance	Black carats	



MAP 23: EROSION

1. East of POLWHILLY to the A75T bridge at
NEWTON STEWART
NX 434 623

Both accreting and eroding

The tidal reach of the River Cree. This unit meanders in a series of extensive loops of which the inner curves exhibit mud accretion. The outside of the curves display erosion at the current MHWS mark. The hinterland is low lying but protected in parts by earthwork flood defences.

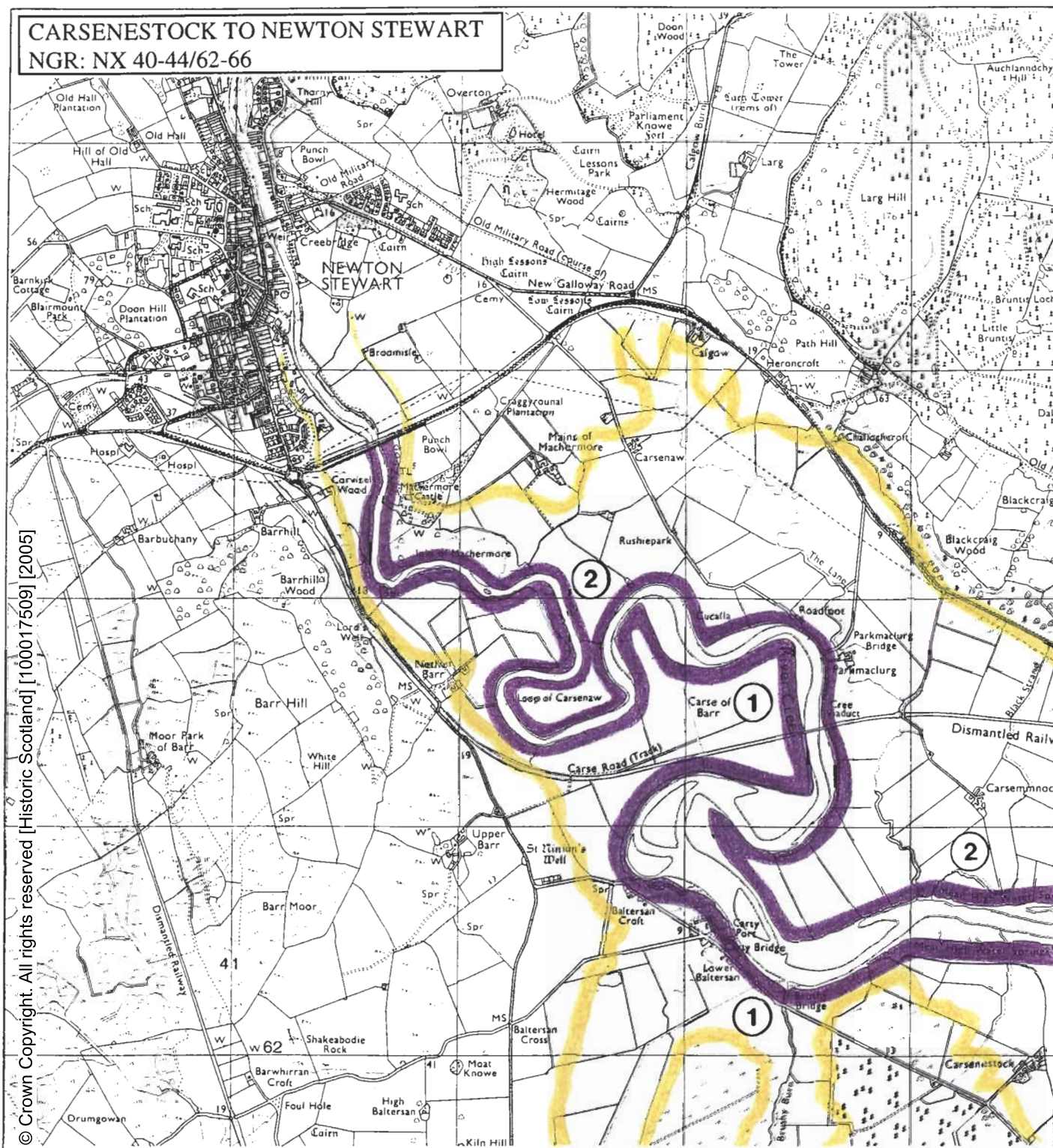
2. A75T bridge at NEWTON STEWART to
south of MEIKLE CARSE
NX 437 631

8.5km

Both accreting and eroding

East side of the lower tidal reach of the River Cree. Both accretion and erosion is occurring as in that described in the previous unit.

CARSENESTOCK TO NEWTON STEWART
NGR: NX 40-44/62-66



© Crown Copyright. All rights reserved [Historic Scotland] [100017509] [2005]

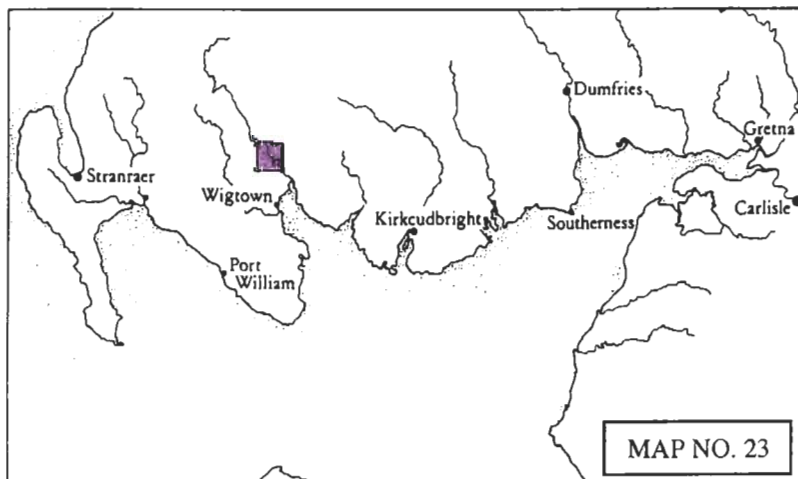
KEY

Erosion class	Derwent Code	Colour
Definitely accreting	Prussian Blue	
Accreting/stable	Light Blue	
Stable	Grass Green	
Stable/eroding	Deep Chrome	
Definitely eroding	Deep Vermilion	
Both accreting and eroding	Imperial Purple	
No access	Blank	
Land below 10m	Straw Yellow	

MAP CLASS: EROSION

Assessment date: 02.10.96

Scale 1:25 000



MAP NO. 23

MAP 23: BUILT HERITAGE AND ARCHAEOLOGY

Sites on the Coast Edge & Foreshore

None

Sites in the Hinterland

NX 4175 6445
MACHERMORE CASTLE
Castle
17/18th century
Good
Nil

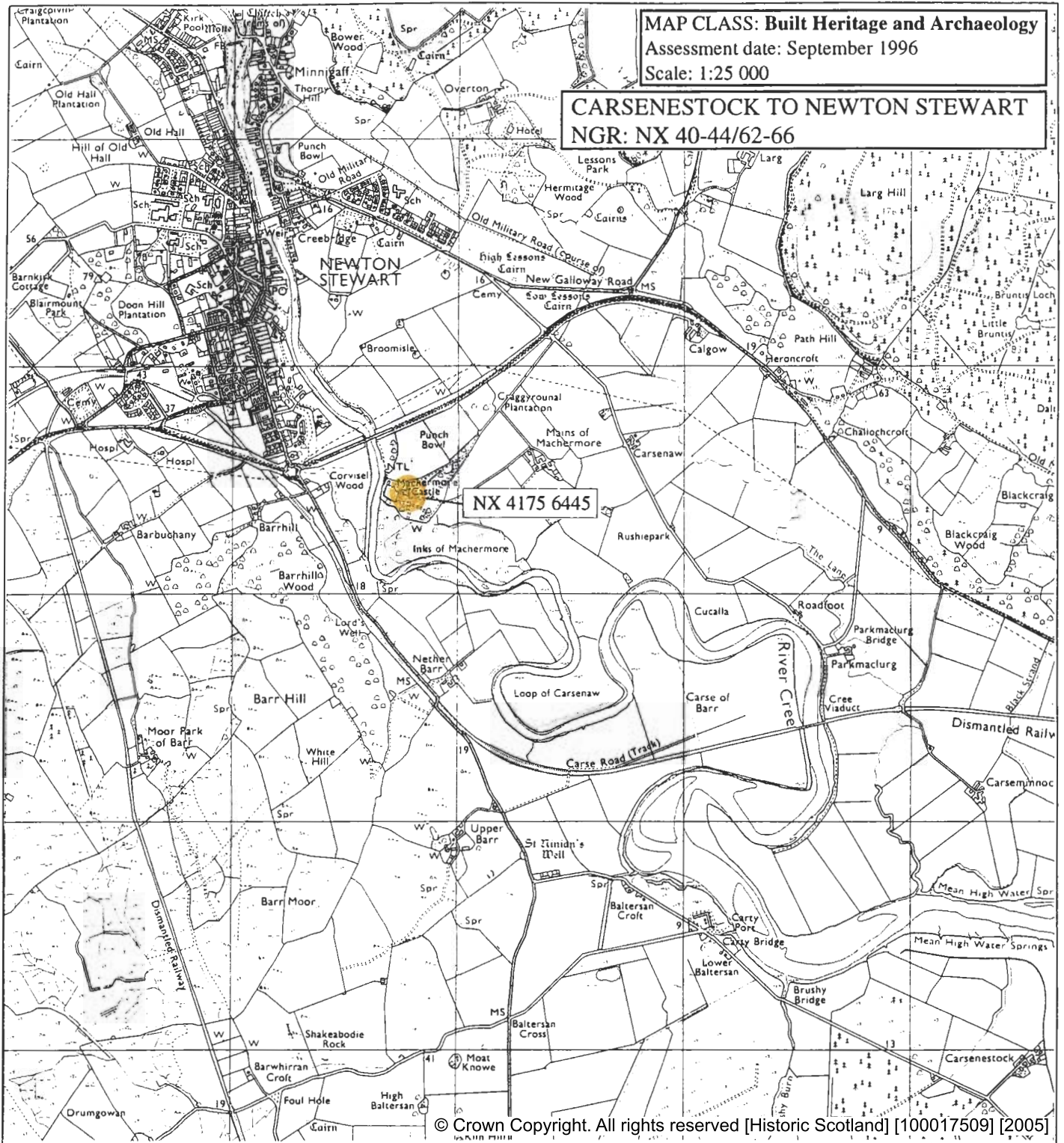
MAP CLASS: Built Heritage and Archaeology

Assessment date: September 1996

Scale: 1:25 000

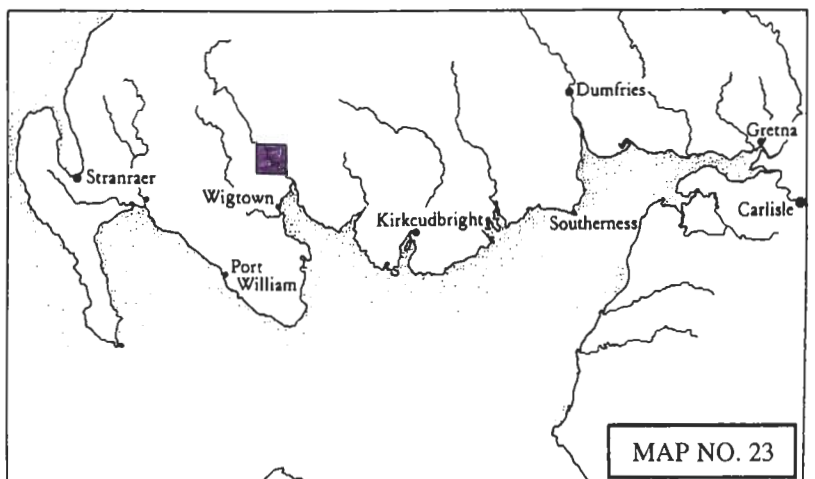
CARSENESTOCK TO NEWTON STEWART

NGR: NX 40-44/62-66



KEY

Site location	Symbol	Colour	Significance
NGR ref. - eg. NX 143 368	Roundel - Solid, (or area)	Red	Protected Ancient Monument
	Cross	Red	Listed Historic Building
NMRS ref. - eg. NX13 SW17	Roundel - Open, (or area)	Red	Monument formally proposed by Historic Scotland for designation
	Roundel - Solid, (or area)	Yellow	Other known Ancient Monument
	Dashed outline	Yellow	Gardens/Designed landscape
	Roundel - Solid, (or area)	Yellow	Undesignated wreck
	Area	Green	Insufficient information; more work needed
	Area	Blue	Probably archaeologically sterile



MAP NO. 23

