

## MAP 21: WIGTOWN TO GRANGE OF CREE

**Hinterland Geology and Coastal Geomorphology:** The main characteristics within this region of the coastline are flat featureless salt-marsh overlooking Wigtown Sands. The salt-marsh is protected in parts by breakwaters. A network of small creeks fill with seawater on flood tides. In the region of Scour Fishery a breakwater protects a promontory headland. This overlooks river channels towards the Grange of Cree. The land immediately behind the marsh is very flat and lies below 5m O.D.

**Erosion Class:** This stretch of coastline is accreting with estuarine mud and silts due to the high incidence of suspended sediments circulating within the upper tidal reaches of Wigtown Bay. Tidal conditions and the sediment trapping qualities of salt-marsh play a role in the deposition of mud in the region. Because the coastal topography is composed of poorly consolidated clays, silts and sands, which are highly mobile, it is likely that the line of the creeks will change, particularly after very heavy rain, or spring ice-melt. This makes it very difficult to say whether or not the coast is stable, because it is continually changing its shape.

**Built Heritage & Archaeology:** A sparse, scattered distribution of sites are included in this section. Fishing stake nets, a common feature in the area, survive in Wigtown Sands, in a good condition. A breakwater and a bridge survive near Barsalloch Farm; the former requires monitoring due to the detrimental and combined effect of the tide and flooding caused by upland drainage.

## Map 21: Hinterland Geology and Coastal Geomorphology

---

1. East of WIGTOWN CASTLE to east of  
BARSALOCH FARM

NX 464 560

5km

Low edge (< 5m)

*Estuarine saltmarsh and tidal mudflats*

dissected by a network of drainage channels. The foreshore is exclusively estuarine mud.

2. East of BARSALOCH FARM to north of  
GRANGE of CREE

NX 460 598

1.5km

Low edge (< 5m)

*Saltmarsh flats and estuarine mud*

Saltmarsh on low river-edge with deep river channel. Low tidal flats intermixed with fine grained sand and mud.

---

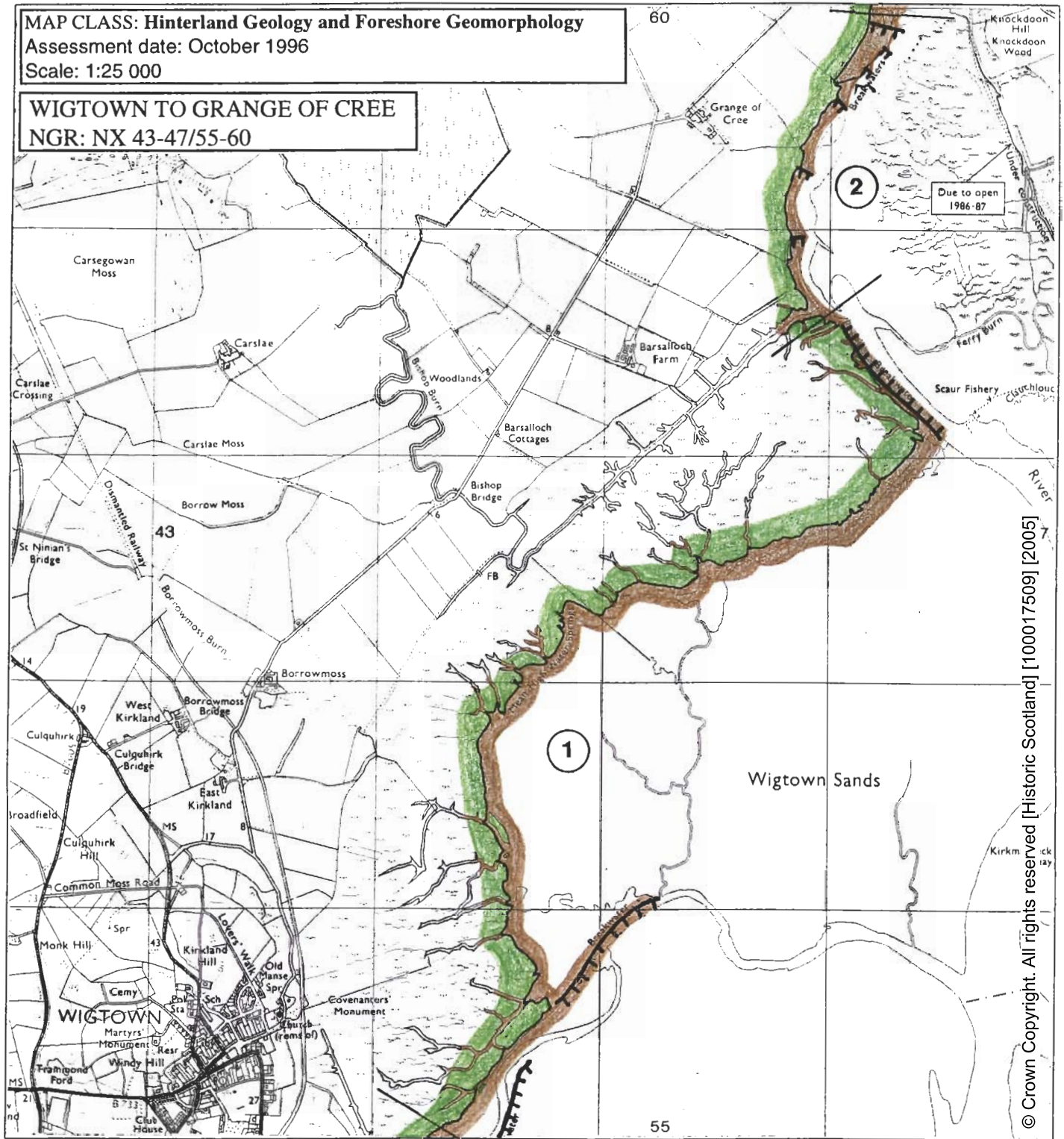
**MAP CLASS: Hinterland Geology and Foreshore Geomorphology**

Assessment date: October 1996

Scale: 1:25 000

**WIGTOWN TO GRANGE OF CREE**

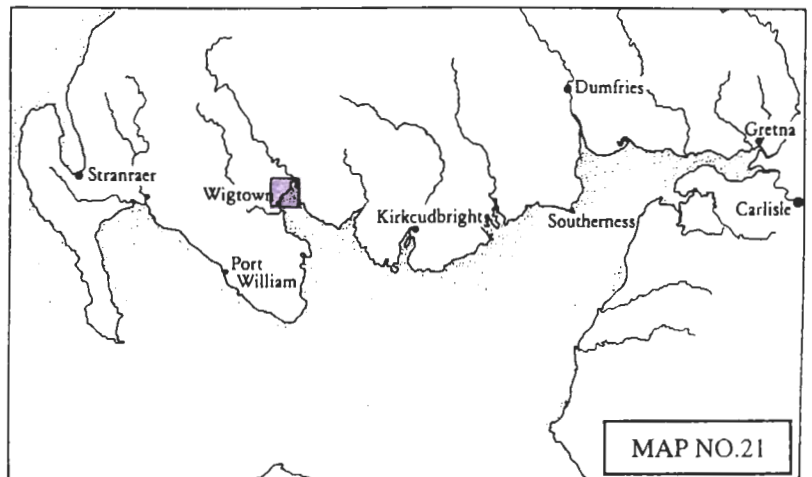
NGR: NX 43-47/55-60



© Crown Copyright. All rights reserved [Historic Scotland] [100017509] [2005]

**KEY**

Hinterland Geology	Derwent Code	Colour
Drift, boulder clay	French Grey	
Drift, boulder clay over visible rock	Dark Violet	
Raised beach and marine deposits	Golden Brown	
Blown sand	Pink Madder Lake	
Glacial sand and gravel	Magenta	
Alluvium	Emerald Green	
Coastal Geomorphology		
Mainly rock platform	Deep vermilion	
Mainly sand	Ultramarine	
Mainly alluvial/marine mud	Venetian Red	
Marsh	May Green	
Coast Edge		
Low edge (<5m)	Thin black line	
Cliff (>5m)	Solid black line	
Man made barrier	Black line with spines	
Shingle beach	Small circles	
Human disturbance	Black carats	



## MAP 21: EROSION

---

1. North of WIGTOWN HARBOUR to north-west of BARSALLOCH FARM

NX 453 575

6.6km

*Accreting or stable*

This unit is a saltmarsh formed by the formation of alluvium on the east side of the River Cree estuary. This wide stretch of marsh is deeply incised by drainage channels. In places arcuate slope failure is occurring on the edge of some of the channels. Due to the high sediment loading the general trend for this region is accretion.

2. West of GRANGE of CREE to east of POLWILLY

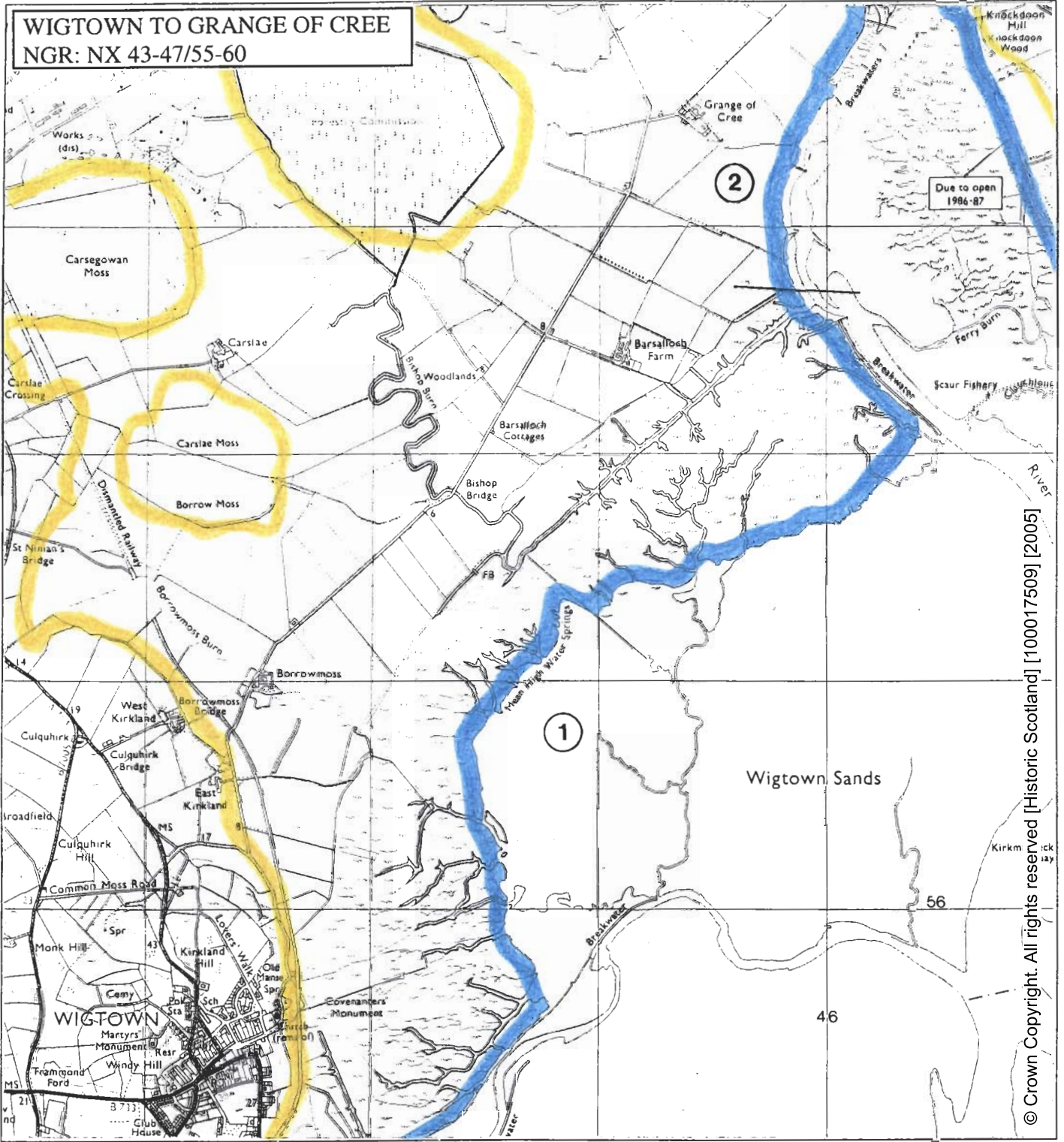
2.3km

*Accreting or stable*

The narrow lower tidal reach of the River Cree. This unit consists of eroding soft mud banks with accreting mud on the edge of breakwaters. Stands of *Phragmites sp* are established which are excellent at trapping silts leading to increased sediment build up.

---

**WIGTOWN TO GRANGE OF CREE**  
**NGR: NX 43-47/55-60**

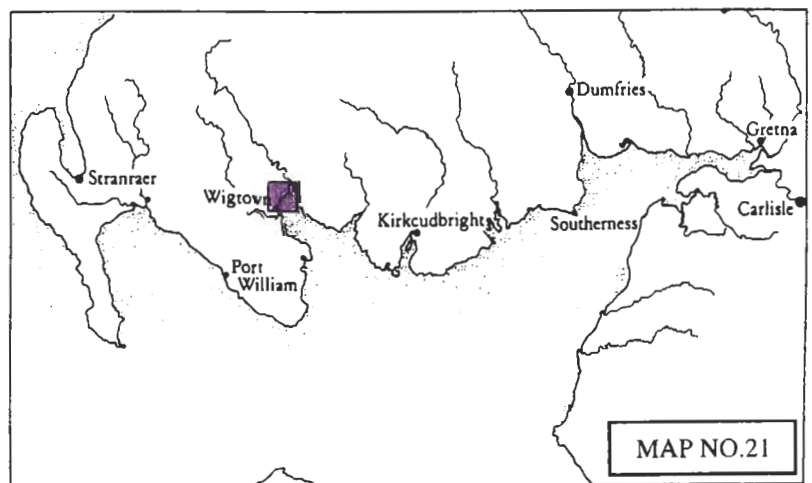


© Crown Copyright. All rights reserved [Historic Scotland] [100017509] [2005]

**KEY**

Erosion class	Derwent Code	Colour
Definitely accreting	Prussian Blue	
Accreting/stable	Light Blue	
Stable	Grass Green	
Stable/eroding	Deep Chrome	
Definitely eroding	Deep Vermilion	
Both accreting and eroding	Imperial Purple	
No access	Blank	
Land below 10m	Straw Yellow	

**MAP CLASS: EROSION**  
 Assessment date: 01.10.96  
 Scale 1:25 000



**MAP NO.21**

## MAP 21: BUILT HERITAGE AND ARCHAEOLOGY

---

### Sites on the Coast Edge & Foreshore

**NX 4520 5708**  
WIGTOWN SANDS  
Fishing Nets  
20<sup>th</sup> century  
Good  
Nil

**NX 4589 5924**  
BARSALLOCH FARM  
Breakwater  
Uncertain  
Poor  
Monitor

### Sites in the Hinterland

**NX 4538 5818**  
BARSALLOCH FARM  
Old Bridge  
Uncertain  
Good  
Nil

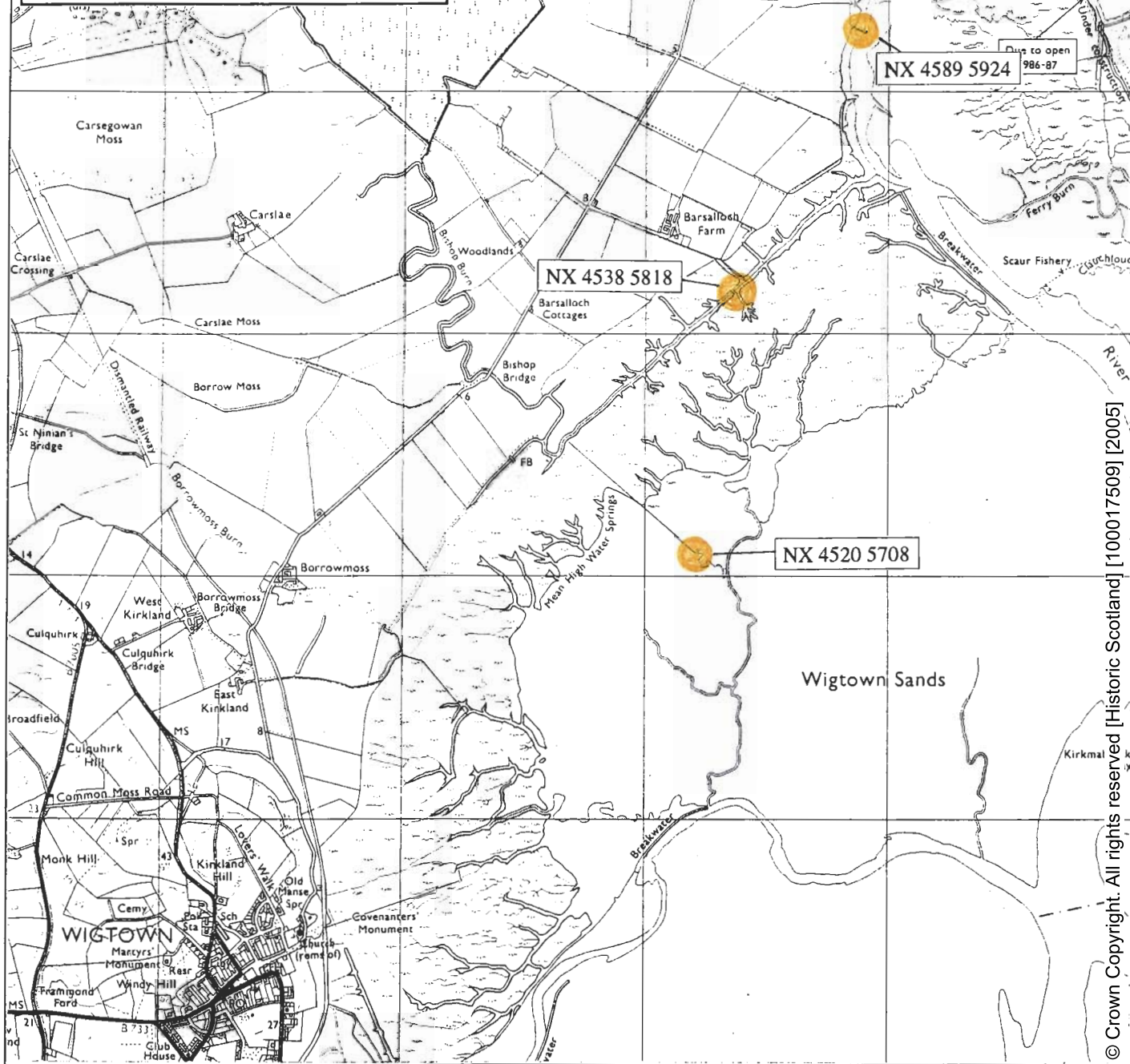
**MAP CLASS: Built Heritage and Archaeology**

Assessment date: September 1996

Scale: 1:25 000

**WIGTOWN TO GRANGE OF CREE**

NGR: NX 43-47/55-60



© Crown Copyright. All rights reserved [Historic Scotland] [100017509] [2005]

**KEY**

Site location	Symbol	Colour	Significance
NGR ref. - eg.	Roundel - Solid, (or area)	Red	Protected Ancient Monument
	Cross	Red	Listed Historic Building
NX 143 368	Roundel - Open, (or area)	Red	Monument formally proposed by Historic Scotland for designation
	Roundel - Solid, (or area)	Yellow	Other known Ancient Monument
NMRS ref. - eg.	Dashed outline	Yellow	Gardens/Designed landscape
	Roundel - Solid, (or area)	Yellow	Undesignated wreck
NX13 SW17	Area	Green	Insufficient information; more work needed
	Area	Blue	Probably archaeologically sterile

