

Map 5: East Burra, Newton to The Taing

Built Heritage and Archaeology

This map section covers the northern half of East Burra. Modern settlement is almost exclusively confined to the west coast, with only a single settlement on the east side. The coastal strip contains frequent pockets of cultivable land, although, on the north and west sides, peat is again encroaching over land which appears to have been cultivated in the past.

A total of 32 sites are recorded in this map section, all of which are new discoveries. The majority are located on the west and north coasts; only three sites were found on the east coast. In all, 23 sites were thought to be of 3rd-1st millennium BC date. These include eight settlements, some of which are accompanied by field systems, six burnt mounds, four burial mounds and five sets of fragmentary field systems or land boundaries. The houses occur spread out at intervals along the west and north coasts, interspersed with field systems. The burnt mounds occur in a cluster located between Norbister and Houlls, while the burial mounds lie close together on the north west coast.

Three long houses of probable 10th-14th C date are located on the north west corner of the island. The houses, which are already much damaged by erosion, are surrounded by the remains of associated field systems. Four sites of unknown date were recorded. Three of the sites are represented by mounds or cairns, while one may be a marker or navigation cairn. Sites of 18th-20th C date included a series of click mills and an enclosure.

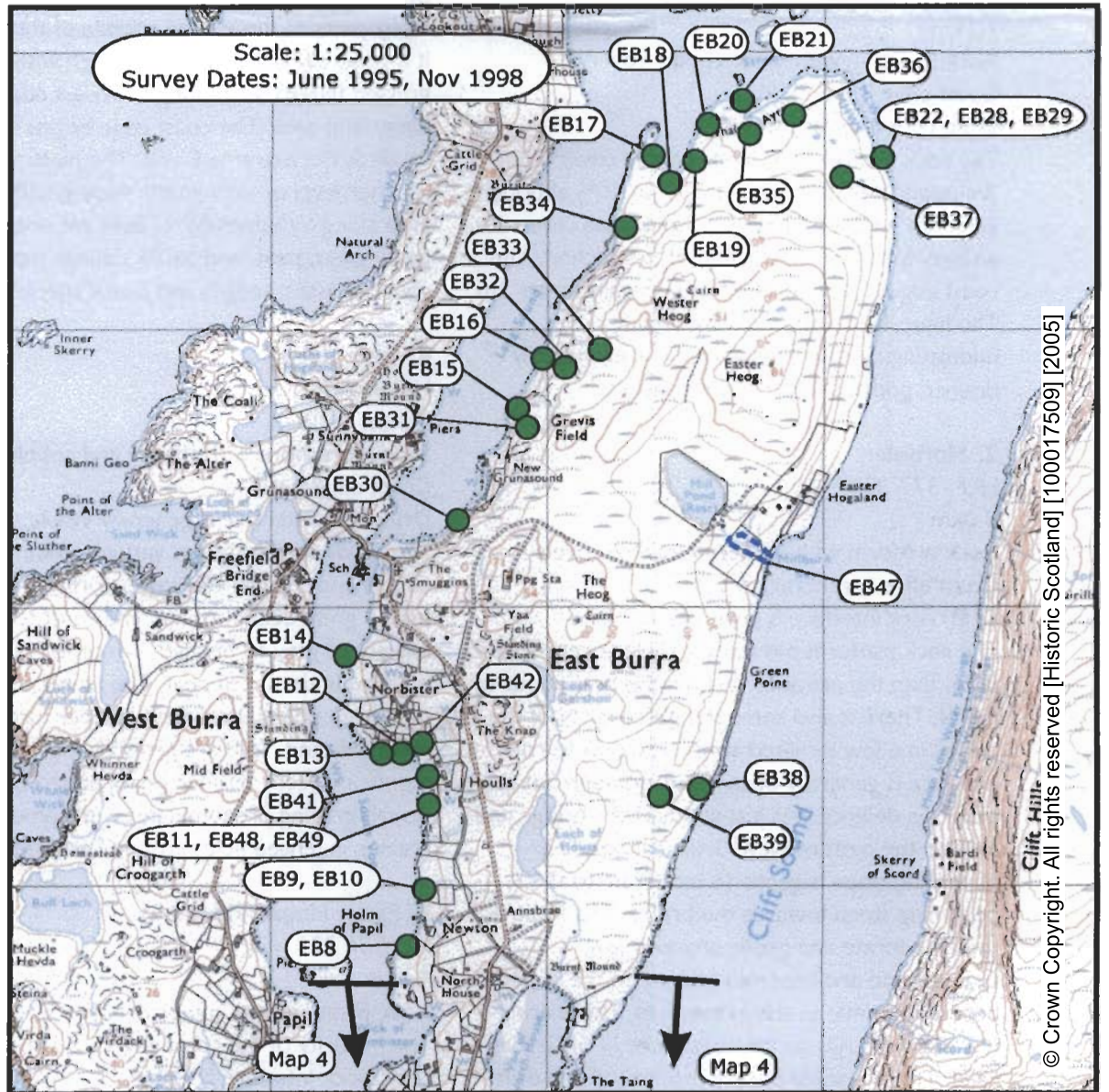
Geomorphology

This unit encompasses the main bulk of East Burra. The geomorphology of the hinterland tends to be fairly uniform with the west side perhaps slightly more rugged than the east side and a low rolling areas to the north.

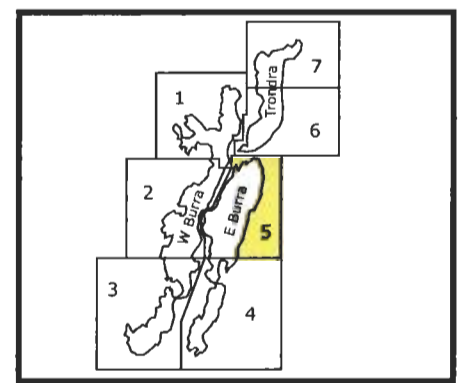
Erosion

Most erosion occurs along the east side of the island, where there are deep drift deposits.

<p>EB8 HU 3750 3180 Newton Mound, possible clearance cairn Unknown Fair Survey</p>	<p>EB15 HU 379 338 Grevis Field Possible burial cairn 3rd-1st Mill BC Poor Survey</p>	<p>EB22 HU 3915 3460 Whalsies Ayre Structure, possible house 3rd-1st Mill BC Fair Monitor</p>	<p>EB34 HU 382 343 Wester Heog Field boundary 3rd-1st Mill BC Fair Survey</p>	<p>EB42 HU 3753 3250 Norbister Possible burnt mound 3rd-1st Mill BC Good-fair survey</p>
<p>EB9 HU 3755 3230 Newton House 3rd-1st Mill BC Fair Survey</p>	<p>EB16 HU 3795 3395 Lang Sound Mound 3rd-1st Mill BC Fair Survey</p>	<p>EB28 HU 3915 3459 Whalsies Ayre Enclosure 3rd-1st Mill BC Fair-poor Survey</p>	<p>EB35 HU 3870 3470 Whalsies Ayre Structure, house or cairn 3rd-1st Mill BC Good Survey</p>	<p>EB46 HU33SE6 HU 3800 3166 Voe of North House Burnt mound 3rd-1st Mill BC Fair Survey</p>
<p>EB10 HU 375 320 Newton Burnt Mounds 3rd-1st Mill BC Fair-poor Survey</p>	<p>EB17 HU 384 346 Whalsies Ayre Structure, possible longhouse 10th-14th C Poor Survey</p>	<p>EB29 HU 3915 3458 Whalsies Ayre Indeterminate Unknown Poor Nil</p>	<p>EB36 HU 3887 3478 Whalsies Ayre Houses and field system 3rd-1st Mill BC Good Survey</p>	<p>EB48 HU 3757 3230 Houlls Burnt mound 3rd-1st Mill BC Fair Survey</p>
<p>EB11 HU 3755 3230 Houlls Burnt mound 3rd-1st Mill BC Fair Monitor</p>	<p>EB18 HU 3845 3455 Whalsies Ayre House and field system 3rd-1st Mill BC Fair Survey</p>	<p>EB30 HU 3765 3331 The Smuggins Enclosures 18th-20th C Fair Nil</p>	<p>EB37 HU 3905 3454 east of Whalsies Ayre Settlement and field system 3rd-1st Mill BC Fair-poor Survey</p>	<p>EB49 HU 3765 3232 Houlls Burial mound 3rd-1st Mill BC Fair Survey</p>
<p>EB12 HU 375 325 Norbister Burnt mound 3rd-1st Mill BC Poor Monitor</p>	<p>EB19 HU 385 346 Whalsies Ayre Mound: indeterminate Unknown Poor Monitor</p>	<p>EB31 HU 3790 3365 Grevis Field Enclosures and mound 3rd-1st Mill BC Fair-poor Survey</p>	<p>EB38 HU 385 323 east of Loch of Gershon Boundary bank 3rd-1st Mill BC Fair Survey</p>	
<p>EB13 HU 374 325 Midfield Norbister Possible burial cairn 3rd-1st Mill BC Fair Survey</p>	<p>EB20 HU 3855 3475 Whalsies Ayre Structure: possible longhouse 10th-14th C Poor Survey</p>	<p>EB32 HU 3805 3388 Grevis Field Settlement and field system 3rd-1st Mill BC Fair-poor Survey</p>	<p>EB39 HU 3842 3233 east of Loch of Gershon Cairn Unknown Fair Survey</p>	
<p>EB14 HU 373 328 Norbister/Bridge End Settlement remains 3rd-1st Mill BC Poor Survey</p>	<p>EB21 HU 3865 3480 Whalsies Ayre Structure, possible long house 10th-14th C Poor Survey</p>	<p>EB33 HU 3816 3395 Wester Heog Enclosure 3rd-1st Mill BC Fair Survey</p>	<p>EB41 HU 3757 3240 Houlls Burnt mound 3rd-1st Mill BC Fair-poor Survey</p>	



- Built Heritage & Archaeology
- Protected Ancient Monument or area of Designated Wreck
 - Monument **formally proposed** by Historic Scotland for scheduling or wreck for designation
 - + Listed Historic Building
 - Undesignated wreck
 - Known ancient monument
 - Site found by this survey
 - Site complex



1. Newton

HU 375 321

1.1km

Rock platform with some cobble cover.

Coast edge is < 5 m.

Drift/rock interface is visible.

The rock platform has some cobble cover along the upper foreshore perhaps up to 40% although generally a lot less. There is also a small cove with a sandy foreshore at the end of this section. The coast edge is well defined and generally under 2m.

The hinterland slope is gently sloping or undulating. Soils are imperfectly or even freely drained podzols under fenced pasture.

2. Norbister

HU 377 334

3.0km

Rock platform with moderate cobble cover.

Coast edge is generally < 5 m.

Drift/rock interface is generally visible.

The rock platform has more cobble cover, 40% to 80%, than the previous section; this grades out to the N. There is also some shingle cover N of the bridge in a few localised areas. The drift to rock interface is generally observable although not at a small sea defence wall just south of the bridge and around the croft of New Grunasound. The hinterland slope is gentle to moderate to the S, becoming steep towards the bridge. The slope is then moderate and gentle around New Grunasound and becomes steeper to the N before becoming gentle to the extreme N. There are a few stabilised rills at the coast edge N of Greivis Field. There is some disturbance of soil and drift just to the N of the bridge where a new track has been carved from the slope. There are outcrops of rock along the steeper slopes north of Greivis Field. Soils S of the bridge are imperfectly to poorly drained podzols, with gleys and rankers to the N. There are grassed fenced fields to the S with more open rough grazing to the N.

3. Whalsies Ayre

HU 390 349

1.4km

Rock platform with shingle and cobble cover.

Coast edge is < 5 m.

Drift/rock interface not generally visible to the W.

Although there is rock platform for the most part there is also a covering of shingle or cobble along

the upper foreshore, 40%-100% cover for most of the W half. The coast edge is not well defined in many parts of the W and middle of this section as it is generally only 0.2m-0.5m high with many grassed talards lying along the coast edge/hinterland area. The coast edge begins to rise towards the extreme E end. The hinterland slope is either level or very gently sloping with a marshy area along Whalsies Ayre. Soils are poorly drained peaty gleys, peat, and partly saltings supporting rough grasses, sedges and *juncus* species.

4. Easter Heog

HU 392 340

1.5km

Sandy foreshore with shingle and cobble cover.

Coast edge is < 5 m.

Drift/rock interface is generally visible.

The sandy foreshore has varying amounts of cobble and shingle. The lower foreshore does not have a great deal of cover. The coast to the north has 3m of grey till beneath 1m of soil colluvium mixture under 0.5m peat. The hinterland gently to moderate slopes, becoming steeper further into the hinterland. Soils are generally peaty to the N then imperfectly drained peaty podzols to the S. Rough grazing predominates with some good grazing in fenced fields around Easter Hogaland.

5. Easter Hogaland (South)

HU 386 323

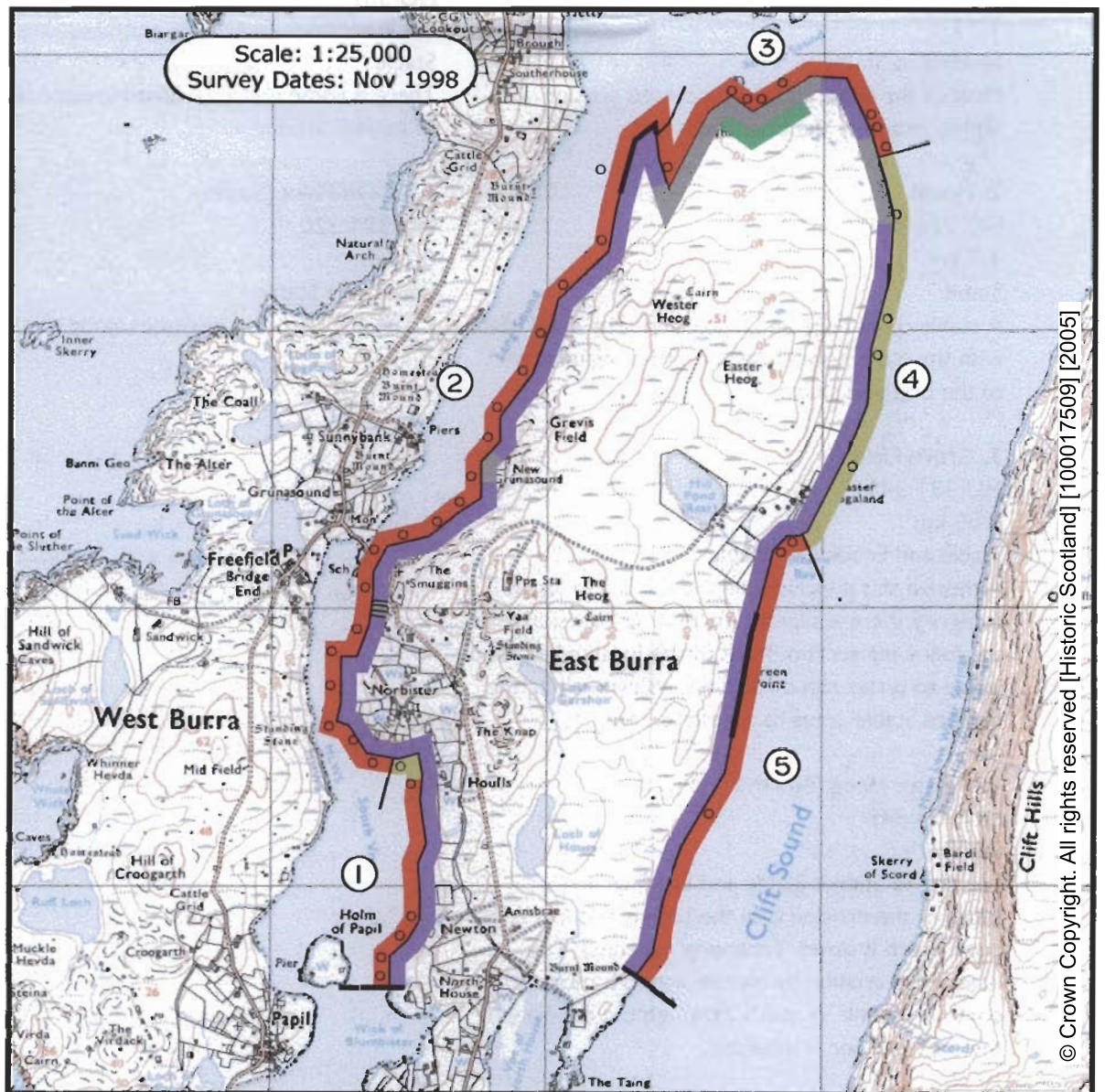
1.8km

Rock platform with minor cobble cover.

The majority of the coast edge is < 5 m.

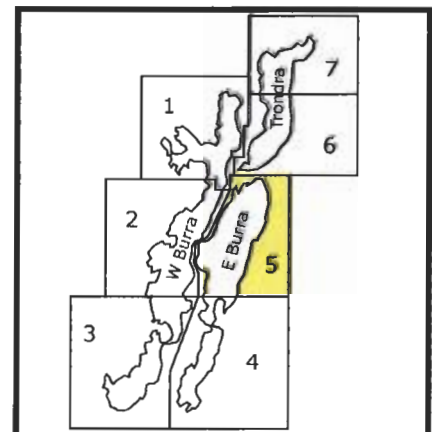
Drift/rock interface is visible.

The rock platform has a few discrete areas of cobble cover one of which is in the cove S of Easter Hogaland. The coastal edge rises to over 5m around Green Point before dropping back to below 5m again. The hinterland is gently to moderately sloping with imperfectly drained peaty podzols and gleys supporting rough grazing to the S and a few fenced fields of better grazing to the N.

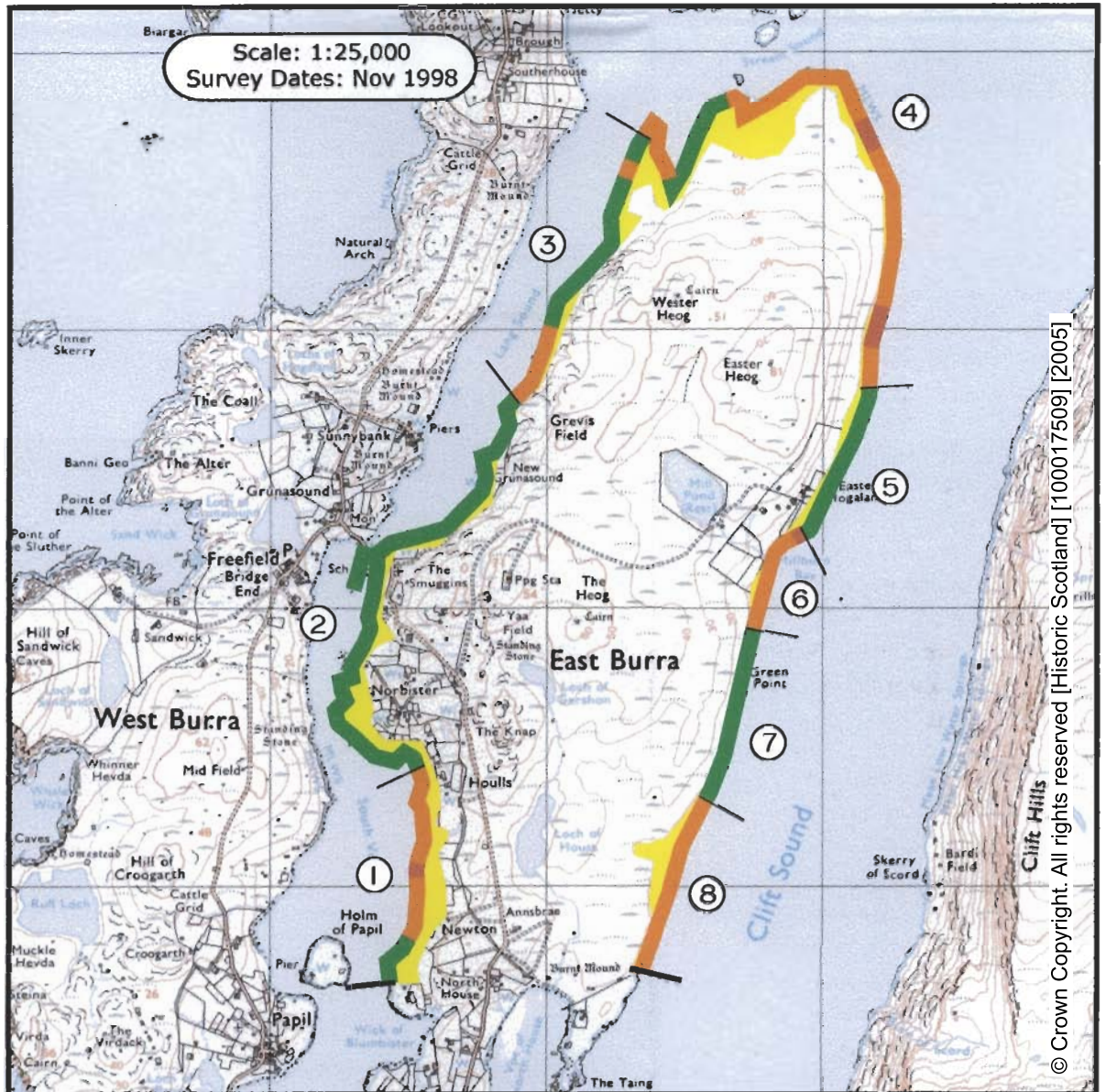


- | | | | |
|------------------|----------------------------|------------------|--------------------|
| Foreshore | Rock platform | Modifiers | Low edge <5m |
| | Mainly sand | | Cliff >5m |
| | Mainly alluvial/marine mud | | Man made barrier |
| | Marsh | | Shingle/storm bank |
| | | | Human disturbance |

- | | |
|-------------------|-----------------------|
| Hinterland | Drift |
| | Drift on visible rock |
| | Raised beach etc. |
| | Blown sand |
| | Glacial sand/gravel |
| | Alluvium |



- | | |
|--|---|
| <p>1. Newton
HU 375 320
1.7 km
Eroding to Stable
Most of the coast edge has localised erosion with slightly more by the boat shed.</p> | <p>7. Green Point
HU 387 326
0.7 km
Stable
There is some minor localised erosion due mainly to marine action.</p> |
| <p>2. Houlls
HU 374 331
1.7 km
Stable
A stable coast edge and hinterland. The small islet with the old schoolhouse and which includes part of the bridge is stable.</p> | <p>8. Green Point (South)
HU 384 320
0.7 km
Eroding to Stable
Coast edge erosion increases along this section.</p> |
| <p>3. Grevis Field
HU 381 341
1.05 km
Stable and Eroding to Stable
Although this is included in the <i>Eroding to Stable</i> category there is slightly less localised erosion than the following section. Most of this localised erosion is due to water run off and occurs even along the marked stable areas to a lesser extent.</p> | |
| <p>4. Wester Heog (North)
HU 391 348
2.3 km
Eroding to Stable, Stable and Eroding
Much of the erosion is of the talards and low coast edge which is slowly becoming dissected. The coast edge erosion by marine action is more common to the W and S although the majority of the edge erosion is localised.</p> | |
| <p>5. Easter Heog
HU 391 336
0.65 km
Stable
The coast edge becomes much more stable with little evidence of erosion.</p> | |
| <p>6. Easter Hogaland (South)
HU 388 331
0.4 km
Eroding to Stable and Eroding
There is a short distance of definite erosion of the coast edge before lessening to more localised erosion to the S.</p> | |



© Crown Copyright. All rights reserved [Historic Scotland] [100017509] [2005]

- Erosion Class**
- Definitely Accreting
 - Accreting or Stable
 - Stable
 - Eroding or Stable
 - Definitely Eroding
 - Accreting and Eroding
 - No access
 - Land below 10m

