

## 4.9 *Map 9: A'Mhòine (E)*

### 4.9.1 *Map Content Descriptions*

#### 1. *Built Heritage and Archaeology:*

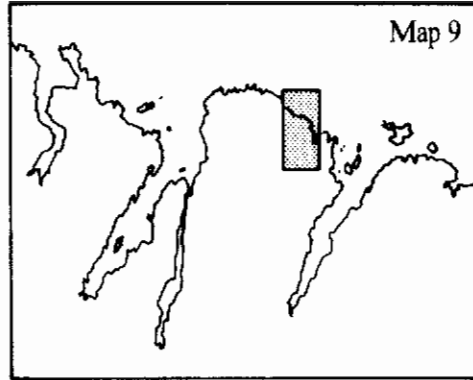
A total of seven sites were recorded in the area covered by Map 9. The relatively low number of sites identified is largely due to the inaccessibility of the A'Mhòine (see Section 1.4 above). However it is not considered likely that the eventual walk-over survey of this area will result in the identification of a great number of sites in such a desolate and wild environment. All of the sites surveyed are Post-Medieval in date and are parts of the settlements at Achininver and Strathan.

#### 2. *Erosion Class:*

The short stretch of cliffs evident at the W of this area form the end of the A'Mhòine peninsula and are stable.

#### 3. *Hinterland Geology and Coastal Geomorphology:*

The cliffs at the W of this area are steep and rugged with a peat- and turf-cover over much visible bedrock. The deep, sand-filled inlet of Traigh an t-Strathain provides the outlet for a burn, which flows down Strath Melness and drains much of the surface water of the A'Mhòine peninsula. This bay constitutes the most westerly accessible part of the coast until the mouth of Loch Eriboll. Where the Strath meets the sea mica schist and epidiorite replace the Moine schist which forms the geology to the E around the Strathan headland. There is another, smaller sand-filled bay at the far E of this area.



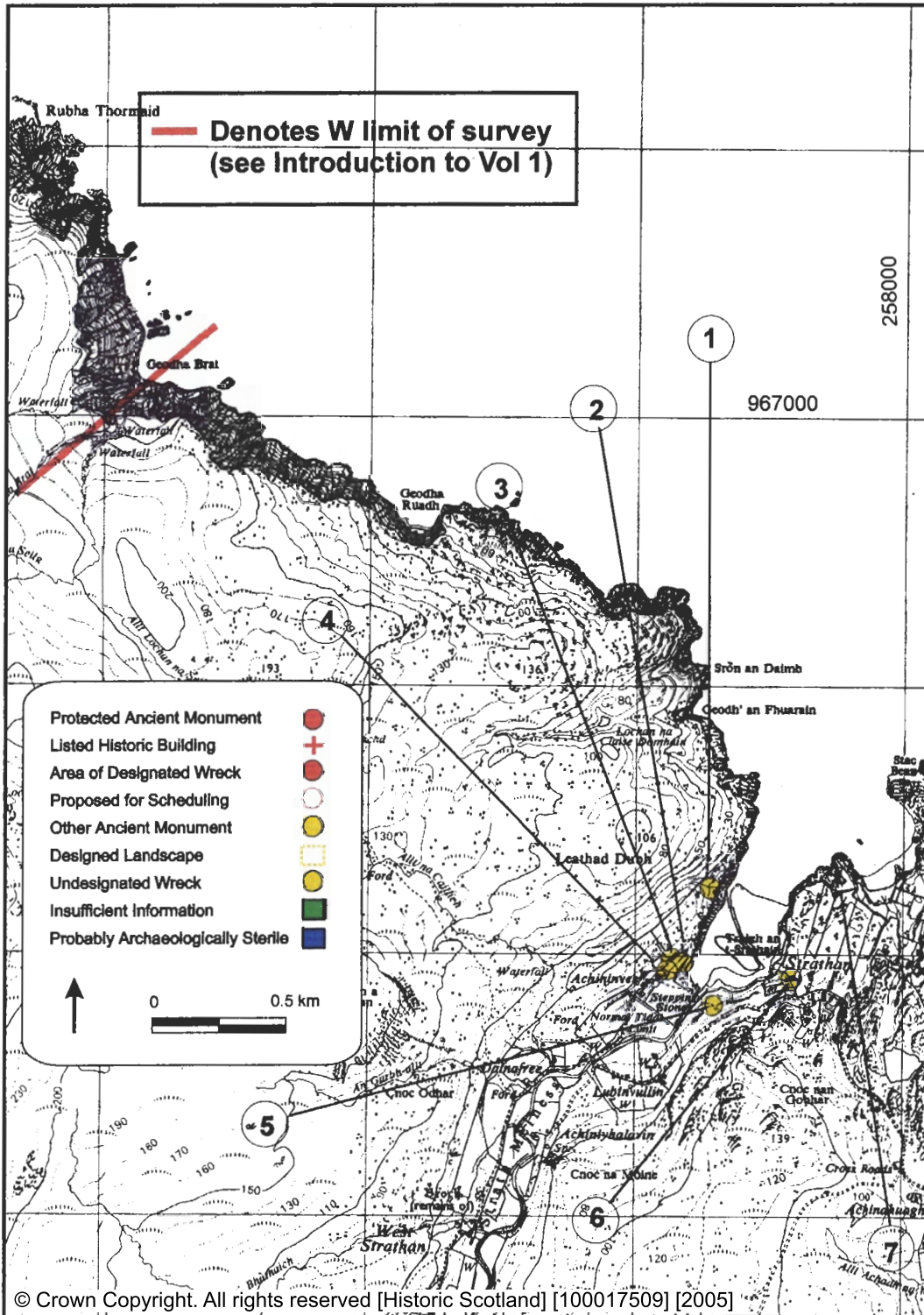
**MAP 9 A'MHOINE (E)**

Built Heritage and Archaeology

NC46/56

Scale 1:25,000

Surveyed November 1997



## Map 9: A'Mhòine (E)

### 4.9.2 The Built Heritage and Archaeology: Gazetteer

#### 1. TRAIGH AN T-SRATHAIN

**G/R:** NC 5729 6527  
**Location:** Hinterland, c 20 m from HWM  
**1:10 560 Map:** NC 56 NE  
**Site Type:** Bridge  
**Date:** ?Post-Medieval  
**Condition:** Good  
**Recommendation:** Survey

#### 2. ACHININVER

**G/R:** NC 5718 6498  
**Location:** Hinterland, c 20 m from beach above HWM  
**1:10 560 Map:** NC 56 SE  
**Site Type:** Dykes  
**Date:** Post-Medieval  
**Condition:** Poor  
**Recommendation:** Survey

#### 3. ACHININVER

**G/R:** NC 5712 6495  
**Location:** Hinterland 50 m from HWM  
**1:10 560 Map:** NC 56 SE  
**Site Type:** Scooped feature  
**Date:** ?Post-Medieval  
**Condition:** Fair  
**Recommendation:** Survey

#### 4. ACHININVER

**G/R:** NC 5713 6493  
**Location:** Hinterland over 100 m from HWM  
**1:10 560 Map:** NC 56 SE  
**Site Type:** Buildings; field-systems  
**Date:** Post-Medieval  
**Condition:** Fair  
**Recommendation:** Survey

#### 5. STRATHAN

**G/R:** NC 5730 6480  
**Location:** Hinterland, c 50 m from HWM  
**1:10 560 Map:** NC 56 SE  
**Site Type:** ?Dam/?Bridge  
**Date:** Post-Medieval  
**Condition:** Poor  
**Recommendation:** Nil

#### 6. STRATHAN

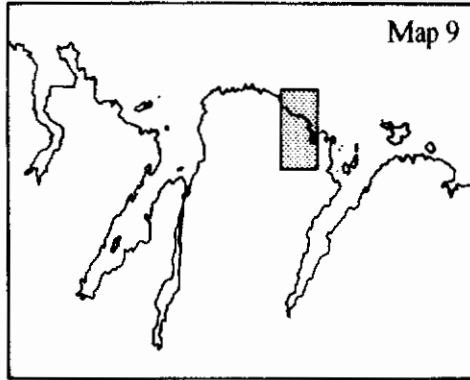
**G/R:** (a) NC 5751 6487  
(b) NC 5759 6491  
(c) NC 5760 6495  
**Location:** Hinterland, between 10 and 60 m from head of beach above HWM  
**1:10 560 Map:** NC 56 SE  
**Site Type:** Building; Dyke; Bridge  
**Date:** Post-Medieval  
**NMRS Number:** NC 56 SE 27  
**Condition:** Poor/Fair  
**Recommendation:** Survey

#### 7. STRATHAN

**G/R:** NC 5765 6480 (centred)  
**Location:** Coast-edge by HWM and Hinterland, extending inland for up to 400 m from HWM  
**1:10 560 Map:** NC 56 SE  
**Site Type:** Township  
**Date:** Post-Medieval  
**NMRS Number:** NC 56 SE 27  
**Condition:** Fair  
**Recommendation:** Survey



Map 9



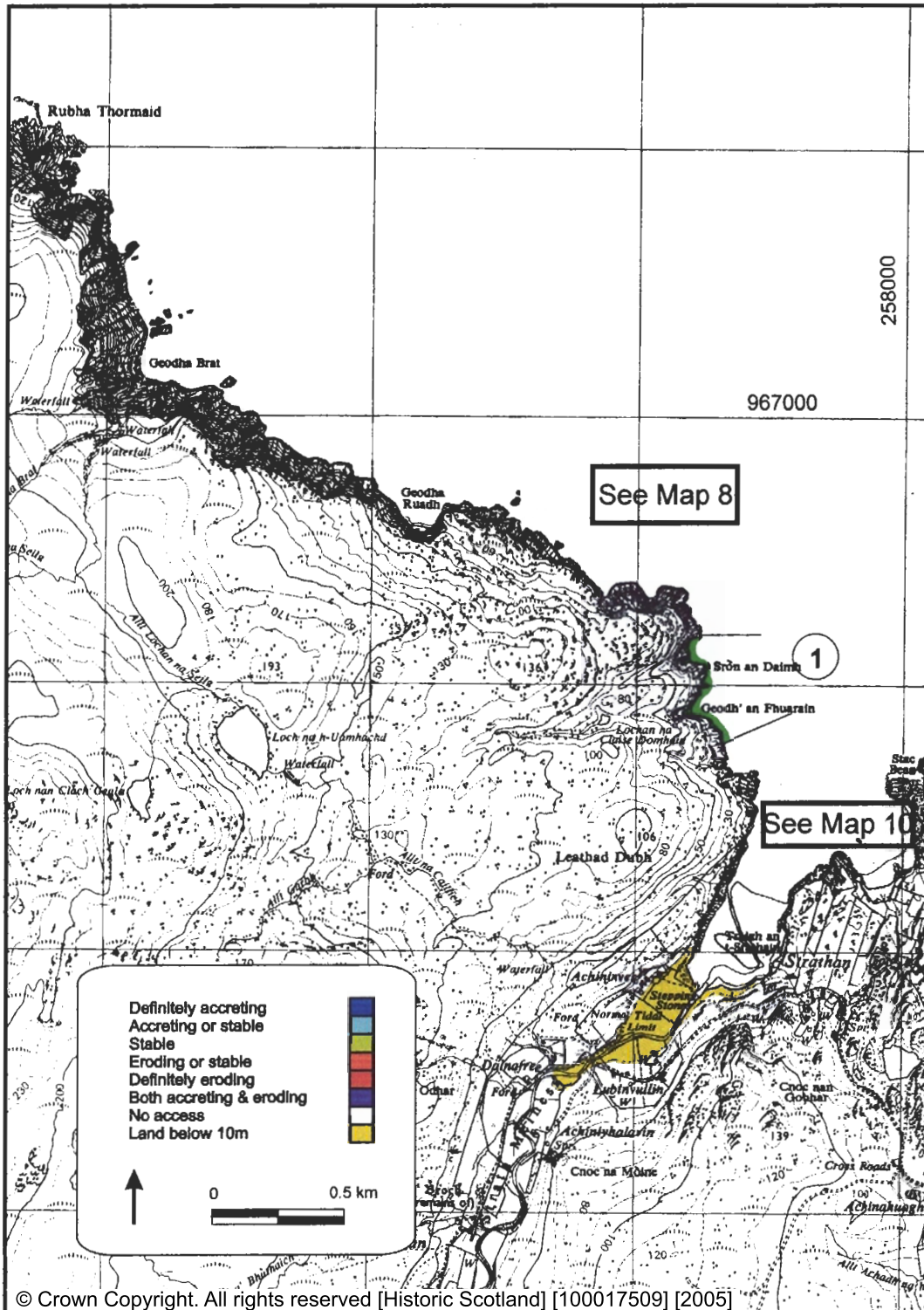
MAP 9 A'MHOINE (E)

Erosion Class

NC46/56

Scale 1:25,000

Surveyed November 1997



*Map 9: A'Mhòine (E)*

*4.9.3 Erosion Class: Gazetteer*

1. GEODH' AN FHUARAIN

NC 257 965

0.5 km

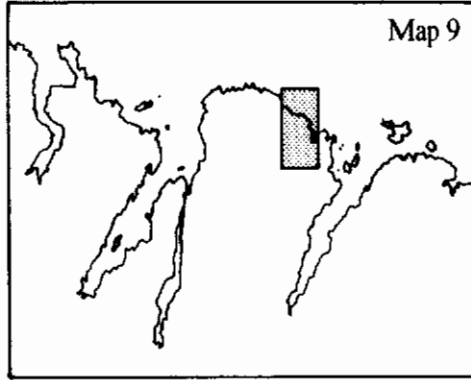
*Stable*

The rock cliffs of this stretch of the coast are stable with no evidence of active erosion.





Map 9



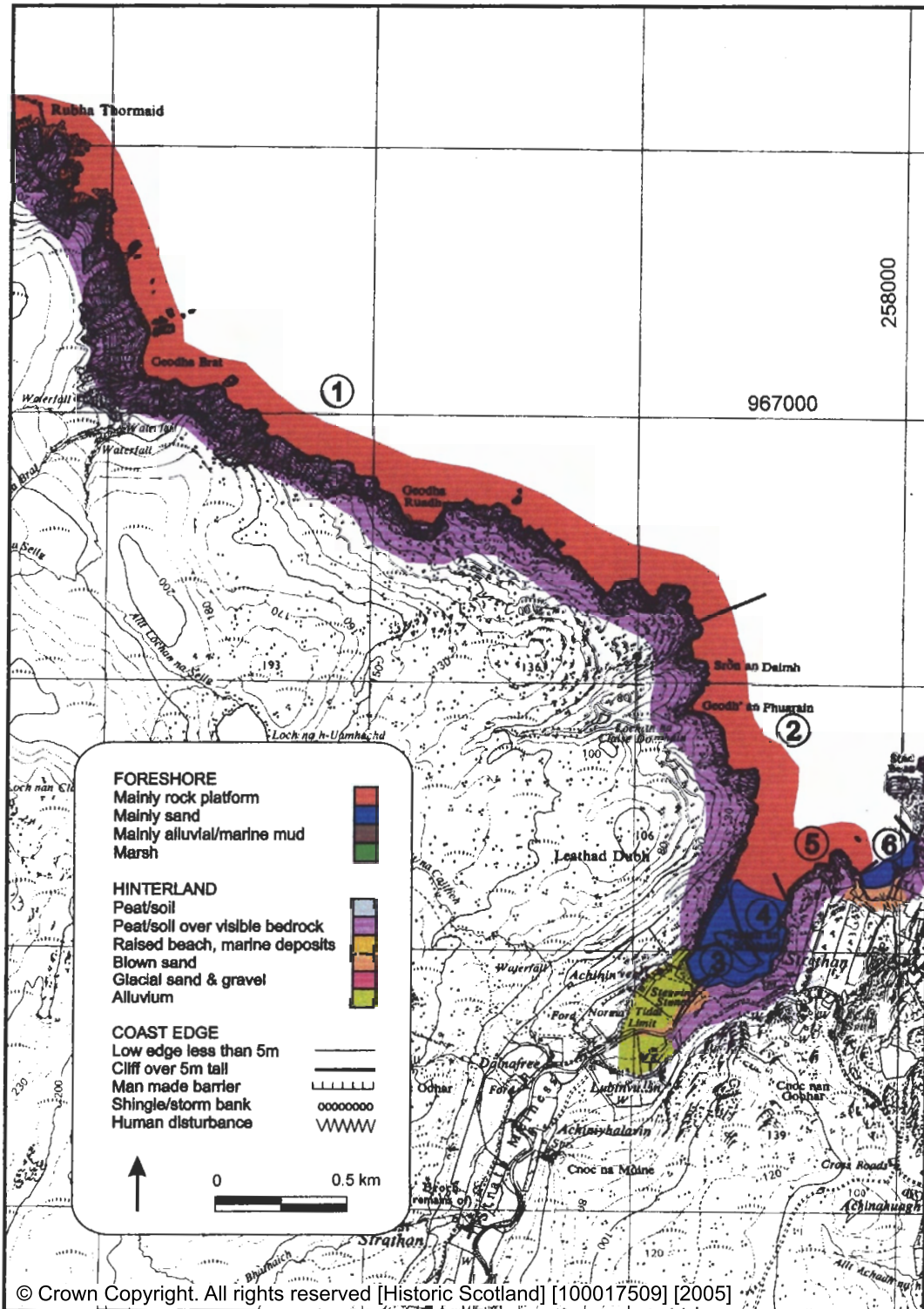
**MAP 9 A'MHOINE (E)**

**Hinterland Geology and Coastal Geomorphology**

NC46/56

Scale 1:25,000

Surveyed November 1997



## Map 9: A'Mhòine (E)

### 4.9.4 Hinterland Geology and Coastal Geomorphology: Gazetteer

#### 1. E OF LEATHAD DUBH

The area represented by this stretch was not visited by this survey and thus no comment can be made about the hinterland geology and coastal geomorphology, other than noting that the lofty rock cliffs of this area are in the Lewisian Gneiss and Cambrian quartzite and that the hinterland is famed for its barren peat bog. This is a continuation of the area covered in Map 8).

#### 2. LEATHAD DUBH

NC 257 965

1.4 km

*Mainly rock platform*

*Cliff > 5 m tall*

*Peat/soil over visible rock*

The cliffs to the NW of Traigh an t-Strathain, from Sròn an Daimh southwards, range from 10-40 m in height. The N stretch exhibits two narrow and totally inaccessible geos and the cliffs fall near vertically to the sea. At Traigh an t-Strathain itself, the cliffs run straight down to the sand-filled bay. The hinterland is steep, rugged outcropping with a peat cover.

#### 3. ACHINVER

NC 257 964

0.2 km

*Mainly sand; alluvial/marine mud*

*Low edge < 5 m*

*Alluvium*

The low-tide sand-beach of Traigh an t-Strathain rises gently over a low edge to the alluvium deposits of Strath Melness. The Strath Melness Burn has an alluvial mud bed evident within the tidal zone.

#### 4. TRAIGH AN T-STRATHAIN

NC 257 964

0.75 km

*Mainly sand*

*Low edge < 5 m; cliff > 5 m tall*

*Peat/soil over visible rock*

The E and S sides of the sand-filled bay rise sharply to 10 m in height after a very narrow flat ledge above the MHWS. The steep ground is peat/soil-covered with areas of visible outcropping, and continues to rise to the N

#### 5. N OF STRATHAN

NC 257 965

0.375 km

*Mainly rock platform*

*Cliff > 5 m tall*

*Peat/soil over visible rock*

The Moine schist cliffs climb to a maximum of 20 m at this small headland, with the platforms below sloping steeply to the sea. The headland itself is peat/soil over visible rock.

#### 6. S OF STAC BEAG

NC 257 965

0.25 km

*Mainly sand*

*Low edge < 5 m*

*Peat/soil over visible rock; blown sand*

The small sand-filled bay S of Stac Beag has a low edge which begins to steepen at the NE end. The hinterland of the S of the bay has an area of blown sand re-deposited from that bay. The higher ground to the NE has a peat/soil-cover.