

## **Introduction to Map 40: Cnoc Aingil to Rubha Glas**

This map section covers some 3.9km of coastline extending along the sandy beach of Traigh Mhor to its southern end at Kintra. Most of this coast edge is either accreting or stable. The hinterland comprises mainly of vegetated dunes and bogland and is used for grazing. There is no modern settlement within the coastal zone although access to the coast is readily gained from the track end at Kintra.

A total of four sites were identified within this map section; one of these had been recorded previously. Three sites are thought to be of 18th-20th C date and include cultivation remains (IY159) and WWII structural remains and refuse dumps (IY160, IY161).

At Knockangle Point a cist burial of prehistoric date (IY297) was exposed by coastal erosion and excavated in 1972 by RCAHMS. The cist was constructed in a sand dune and had been covered by a rough capping of stone and earth. It contained an upper sandy fill which covered a lower fill containing the remains of an inhumation burial. The body is thought to have been laid in a flexed position. Some 1.4m in length of the cist survived, although this is thought to represent approximately only two thirds of its original length. When it was first reported, a piece of flint and a worked piece of slate were noted. There is now no trace of the cist or of any other features at this location.

**IY159**

NR 31878 51110  
Ceathan Ruadh  
Cultivation remains and roads  
18-20th C  
Fair  
Nil

**IY160**

NR 31964 50851  
Ceathan Ruadh  
WWII structural remains- possible engine  
sheds  
18-20th C  
Fair  
Nil

**IY161**

NR 31989 50599  
Ceathan Ruadh  
WWII structures and dump  
18-20th C  
Poor  
Nil

**IY297 (NR35SW 2)**

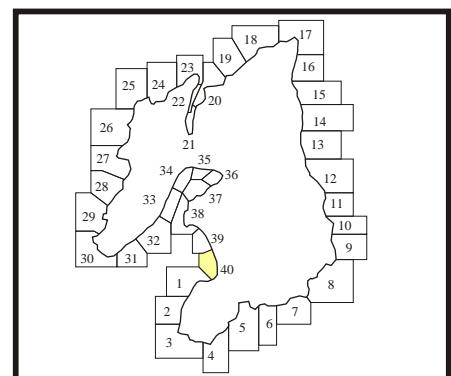
NR 3183 5117  
Knockangle Point  
Cist burial  
3rd-1st Mill BC  
N/A  
N/A



Historic Scotland Licence No. 100017509 2003

© Crown copyright. All rights reserved

- Built Heritage & Archaeology**
- Protected Ancient Monument or area of Designated Wreck
  - Monument formally proposed by Historic Scotland for scheduling or wreck for designation
  - + Listed Historic Building
  - Undesignated wreck
  - Known ancient monument
  - Site found by this survey
  - Site complex



**1. Traigh Mhor (south)**

NR 316 514

0.4 Km

Mainly sand

Coast edge <5m

Blown sand.

This unit encompasses Traigh Mhor, a long sandy beach backed by an extensive dune system. The dunes are covered by a mix of marram and grass. Parts of Islay Airport extend close to the southern part of this unit.

**2. Cnoc Aingil**

NR 317 511

0.3 Km

Rock platform

Coast edge <5m

Blown sand.

This unit encompasses Knockangle Point, a rocky promontory which is covered by dunes in the hinterland. Islay Airport lies immediately in the hinterland of this unit.

**3. Traigh a' Mhachaire**

NR 320 499

3.2 Km

Mainly sand

Coast edge <5m

Blown sand.

This unit encompasses Ceathan Ruadh and Traigh a' Mhachaire, which together form a long sandy beach backed by an extensive dune system. There is some cobble cover of the upper foreshore from the Machrie River south. The dunes are covered by a mix of marram and grass. Parts of Islay Airport extend close to the northern part of this unit. To the south of the airport there is a golf course in the hinterland.



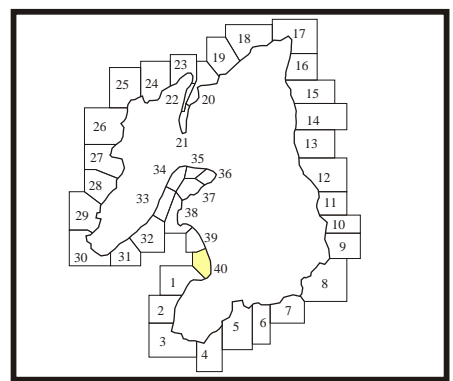
Historic Scotland Licence No. 100017509 2003

© Crown copyright. All rights reserved

- Foreshore**
- Rock platform
  - Mainly sand
  - Mainly alluvial/marine mud
  - Marsh

- Hinterland**
- Drift
  - Drift on visible rock
  - Raised beach etc.
  - Blown sand
  - Glacial sand/gravel
  - Alluvium

- Modifiers**
- Low edge <5m
  - Cliff >5m
  - Man made barrier
  - Shingle/storm bank
  - Human disturbance



**1. Traigh Mhor (south)**

NR 316 515

0.4 Km

Definitely Accreting

The coast edge within this unit is stable and marram grass is colonising the upper foreshore, suggesting that sand is accreting here.

**2. Ceathan Ruadh**

NR 319 500

3.3 Km

Accreting or Stable

The coast edge in this unit appears stable. There is some colonisation by marram grass of the upper foreshore, implying accretion of sand here. The hinterland within this unit appears to be stable.

Two small areas of erosion are included within this unit. The northernmost is c. <100m long and lies to the north of the mouth of the Machrie River. Here the face of the dunes is exposed in a fresh section. To the south of the unit is another area of erosion, also c. <100m long.

**3. Rubha Glas**

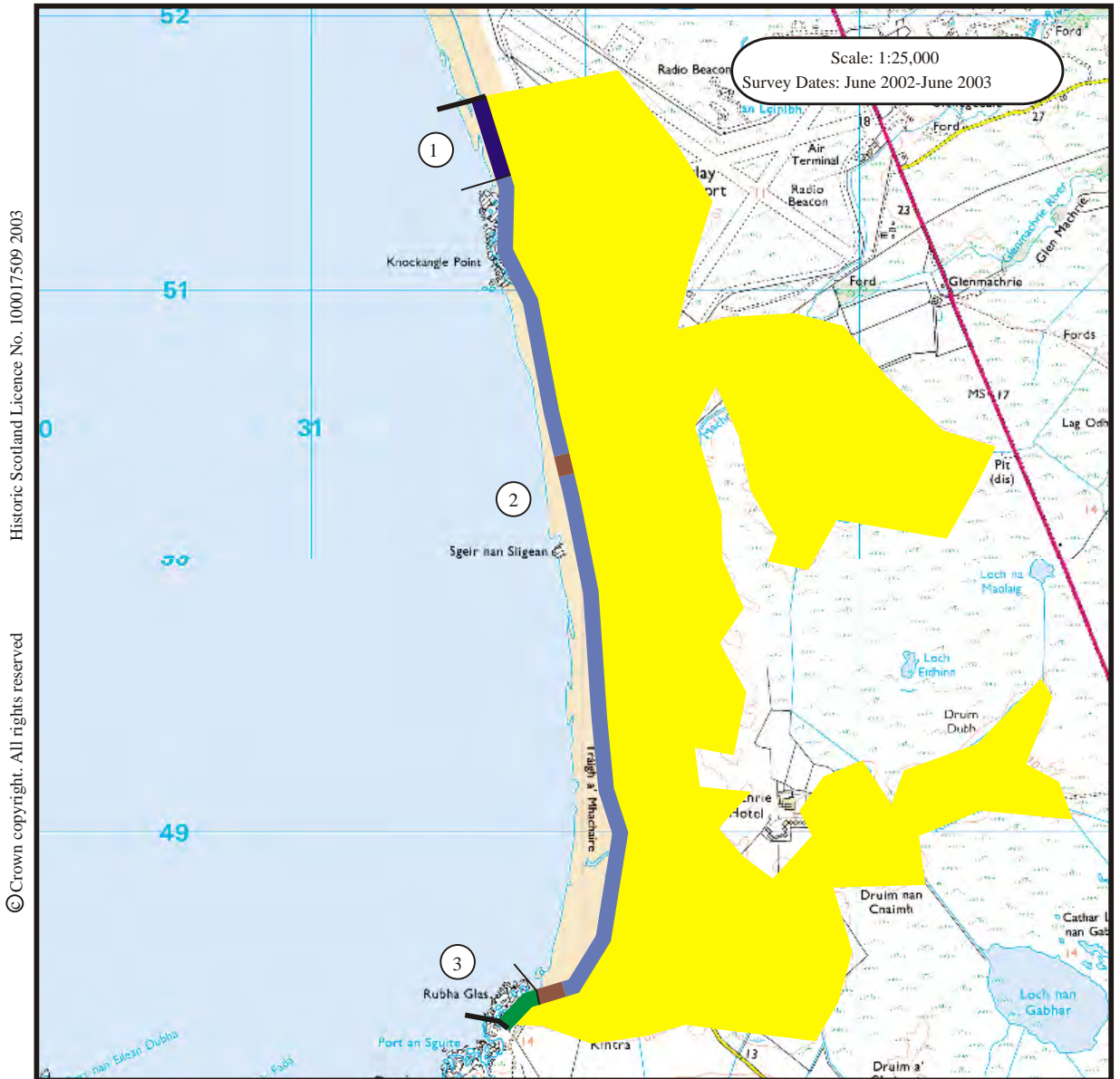
NR 317 483

0.2 Km

Stable

The coast edge in this unit is rocky and stable. No signs of erosion.





Historic Scotland Licence No. 100017509 2003  
© Crown copyright. All rights reserved

- Erosion Class**
- Definitely Accreting
  - Accreting or Stable
  - Stable
  - Eroding or Stable
  - Definitely Eroding
  - Accreting and Eroding
  - No access
  - Land below 10m

