

## **Introduction to Map 36: Bluehouses to Bogh Mhor**

This map section covers some 4.7km of coastline at the eastern side of the head of Loch Indaal. The coastline in this area is low-lying and composed of sandy tidal flats running into saltmarsh at the land's edge, classified as eroding to stable. From Pennycraig Battery south the coast edge is more rocky and stable. The public A846 and A847 roads run close to the coast throughout this section and modern settlement is dispersed along its landward side.

A total of five sites were identified within this map section; two of these had been recorded previously. Three sites are of 18th -20th C date. These include structural remains (IY141, IY144) and cultivation remains (IY143). At Pennycraig (IY141) a single storied brick building on concrete foundations has a concrete roof. It contains three rooms, each of which has a separate entrance and is thought to represent an ancillary building to the WWII seaplane base at Bowmore.

**IY141**

NR 32878 61044  
Pennycraig  
Structure  
18-20th C  
Fair  
Monitor

**IY144** (NR36SW 47)

NR 325 604  
Gartnatra  
Houses  
18-20th C  
Good  
Nil

**IY142**

NR 32880 60963  
Pennycraig  
Quarry, disused  
???  
Fair  
Nil

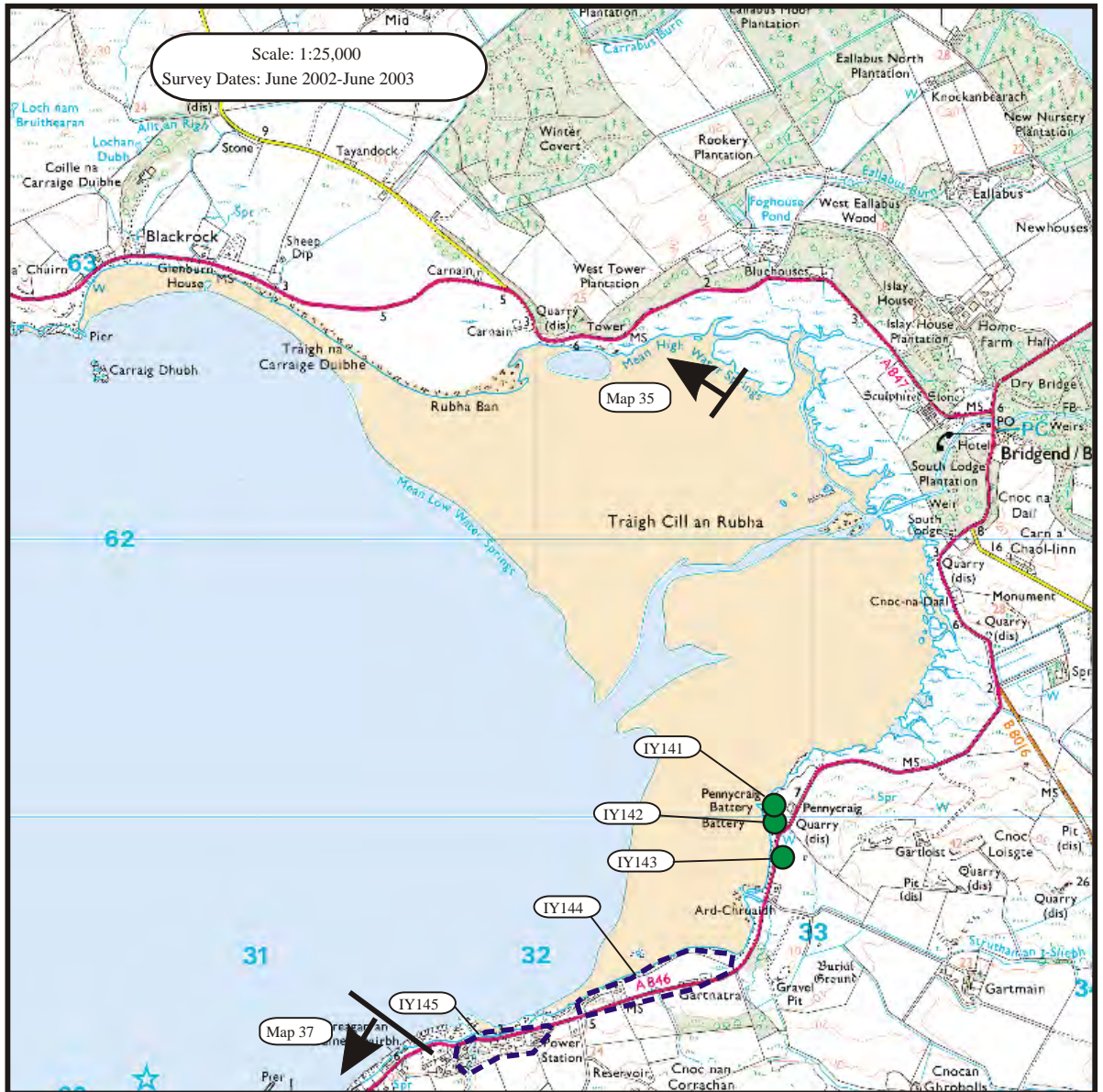
**IY145** (NR36SW 67)

NR 318 602  
Bowmore  
N/A  
N/A  
N/A  
N/A

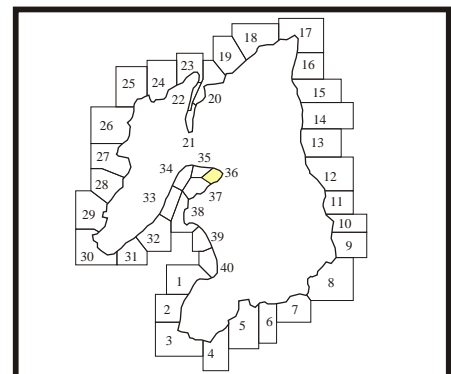
**IY143**

NR 32882 60817  
Pennycraig  
Cultivation remains  
18-20th C  
Fair  
Nil

Historic Scotland Licence No. 100017509 2003  
© Crown copyright. All rights reserved

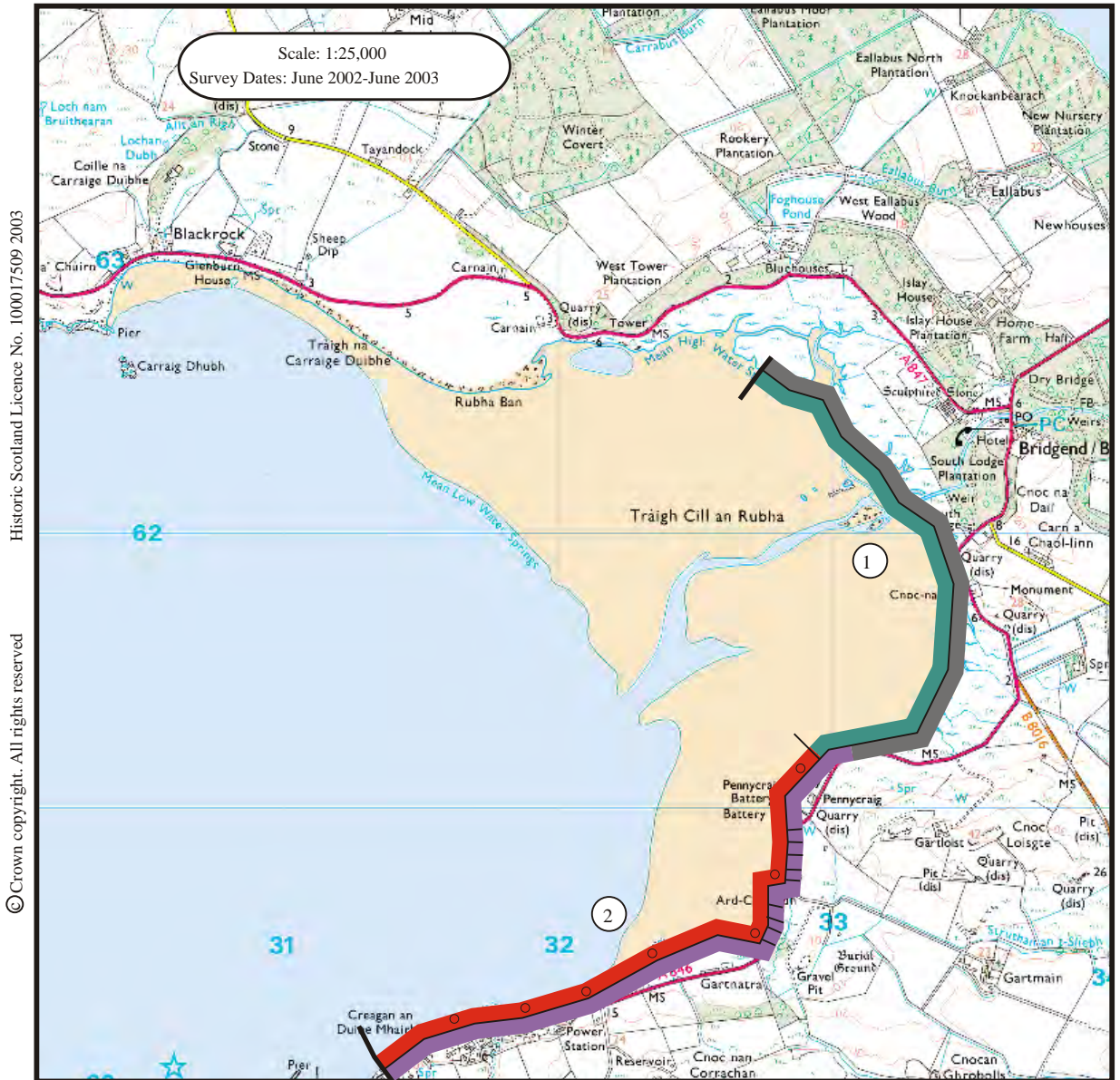




- Protected Ancient Monument or area of Designated Wreck
- Monument formally proposed by Historic Scotland for scheduling or wreck for designation
- + Listed Historic Building
- Undesignated wreck
- Known ancient monument
- Site found by this survey
- Site complex

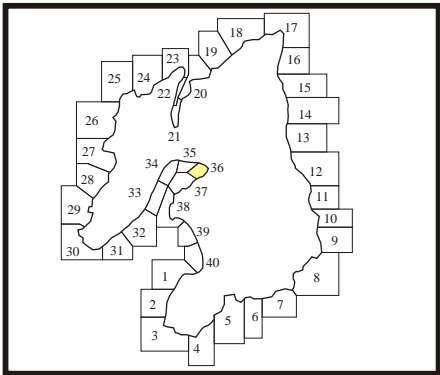


**1. Traigh Cill an Rubha**  
NR 335 617  
2.4 Km  
Marsh  
Coast edge <5m  
Drift.  
Salt marsh in this unit, over 100m deep in places.

**2. Gartnatra**  
NR 324 604  
2.3 Km  
Rock platform  
Coast edge <5m  
Drift on visible rock.  
Rocky coast sloping to sandy beach with gravel cover on upper foreshore. The hinterland is poorly drained rough grazing. The coast edge is protected by sea walling to the south of Pennycraig, where a road comes close to the shore. There is frequent small isolated disturbance to the coast edge on the eastern outskirts of Bowmore, to form hard standings for car parking etc.



- |                   |  |                  |  |
|-------------------|--|------------------|--|
| <b>Foreshore</b>  |  Rock platform              | <b>Modifiers</b> |  Low edge <5m       |
|                   |  Mainly sand                |                  |  Cliff >5m          |
|                   |  Mainly alluvial/marine mud |                  |  Man made barrier   |
|                   |  Marsh                      |                  |  Shingle/storm bank |
| <b>Hinterland</b> |  Drift                      |                  |  Human disturbance  |
|                   |  Drift on visible rock      |                  |  |
|                   |  Raised beach etc.          |                  |  |
|                   |  Blown sand                 |                  |  |
|                   |  Glacial sand/gravel        |                  |  |
|                   |  Alluvium                   |                  |  |



**1. Traigh Cill an Rubha**

NR 335 617

2.3 Km

Eroding or Stable

The coast edge in this unit is formed from a large expanse of low lying salt marsh. The salt marsh appears to be a peaty terrestrial soil, which is slowly becoming inundated by the sea.

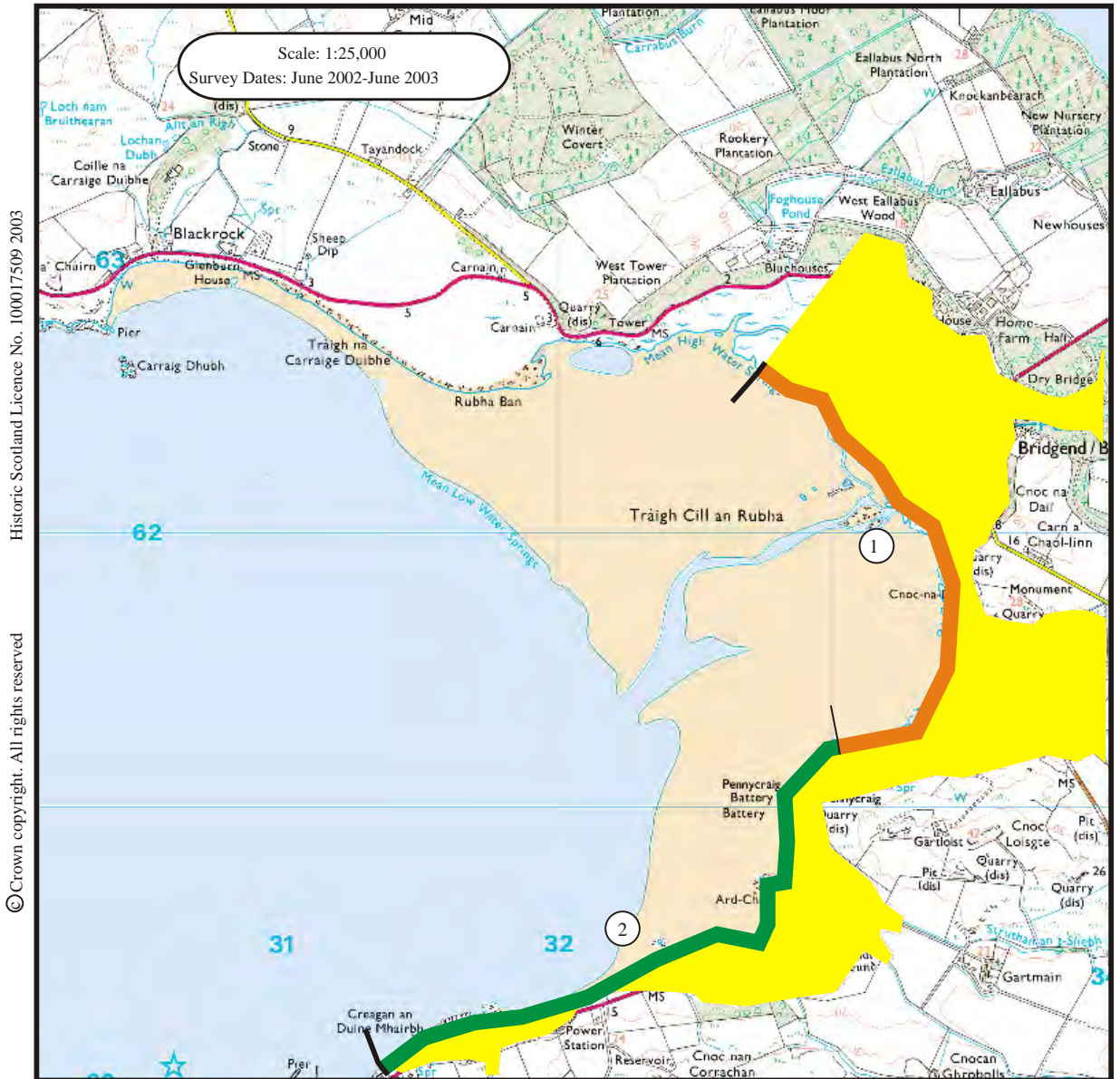
**2. Gartnatra**

NR 324 604

2.4 Km

Stable

The coast edge in this unit is rocky and stable. No signs of erosion.



- Erosion Class
- Definitely Accreting
  - Accreting or Stable
  - Stable
  - Eroding or Stable
  - Definitely Eroding
  - Accreting and Eroding
  - No access
  - Land below 10m

