

Introduction to Map 19: Uamhannan Donna to Gortantaoid Point

This map section covers some 5.2km of coastline. This section extends westward through rugged moorland towards the lower lying ground at the mouth of Loch Gruinart. The coast edge is highest to the eastern end where the land falls in a series of steeply sloping terraces from the prominence of Sgarbh Dubh, 294m OD. But even here, it lies below 30m in height. The shoreline deposits become increasingly more sandy towards the west of the section, culminating in the dune systems which line the eastern shores of Loch Gruinart. The coast edge in this map section has been classified as stable. There is no modern settlement in the area and access to the coast is by foot. There is a rough track from the deserted settlement at Gortantaoid towards the coast.

A total of six sites were identified within this map section; three of these had been recorded previously. Two sites are ascribed to the 18th-20th C date range. These are (IY89) cultivation remains and (IY90) a land boundary. Structural remains (IY67) at Aonan Braigh A'Gheodha comprising of a rectilinear stone setting, may also be of 18th -20th C date, although they are too ruinous to be certain.

Three dun sites (IY87, IY88, IY282), have been previously recorded in this area, although one of these (IY282) could not be relocated by this survey. The dun site at Gortantaoid (IY87) occupies an elongated promontory with steep rocky sides. A wall has been built across the highest point of the neck. No traces of artificial features can be seen beyond the wall. At Doodilbeg (IY88) The site sits upon a rock stack which rises up from low lying ground. It is approached from the seaward side via a rough rocky passage. The remains of a wall stand across the approach, but there are no traces of further structures beyond.

IY67

NR 35371 75590
Aonan Braigh A' Gheodha
Structural remains
???
Poor
Nil

IY87 (NR37SW 3)

NR 33676 74641
Gortantaoid
Dun
???
Fair
Nil

IY88 (NR37SW 4)

NR 33839 74701
Doodilbeg
Dun
???
Fair
Nil

IY89

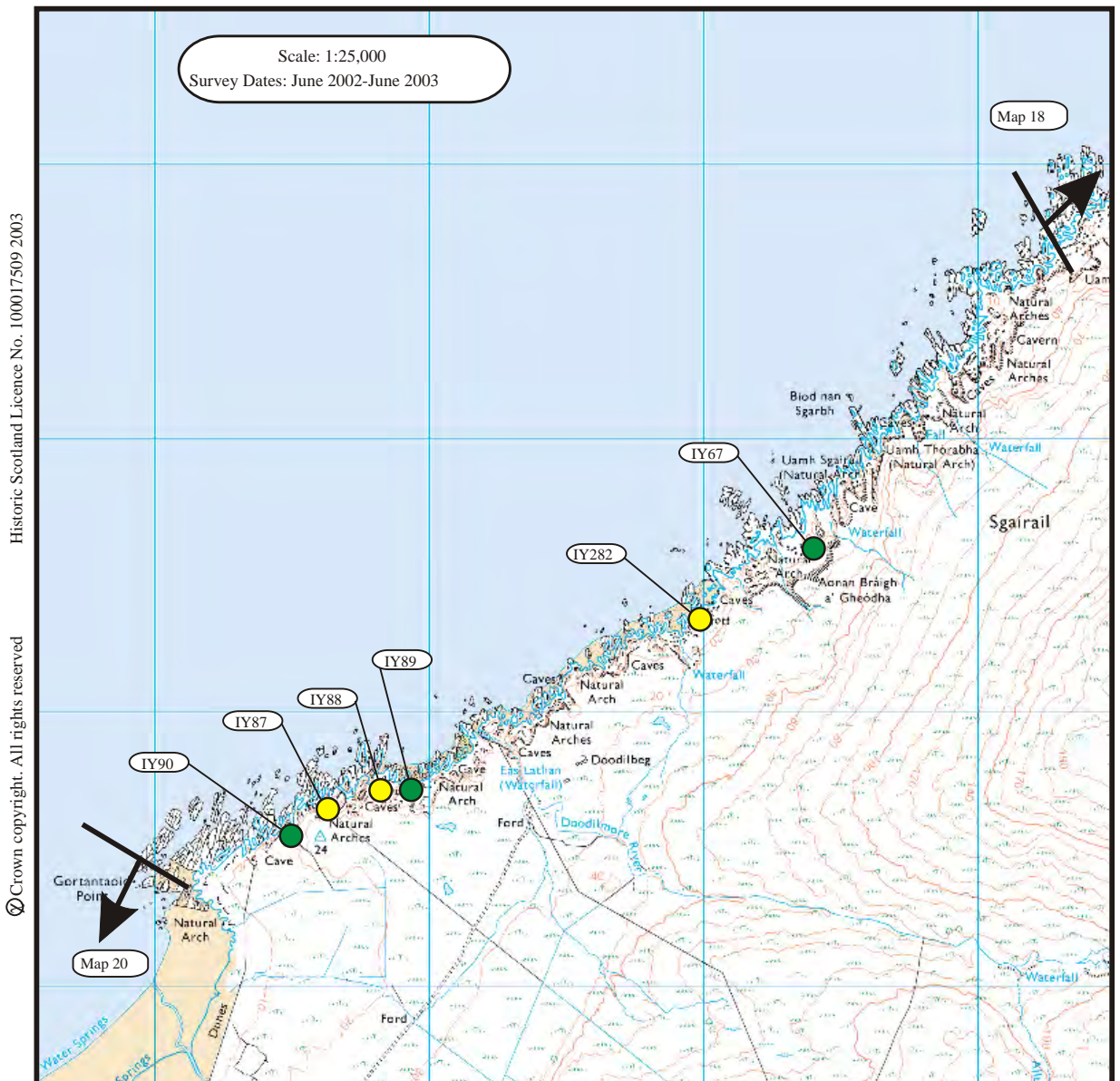
NR 33847 74673
Doodilbeg
Cultivation remains, clearance cairns and
boundary wall
18-20th C
Fair
Nil

IY90

NR 33553 74486
Gortantaoid Point
Land boundary
18-20th C
Fair
Nil

IY282 (NR37NW 1)

NR 3498 7534
Sgairail
Dun
???
N/A
N/A

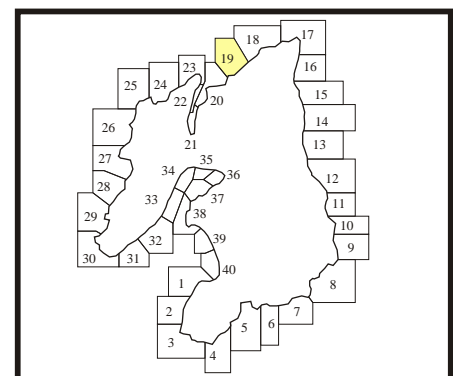


Historic Scotland Licence No. 100017509 2003

© Crown copyright. All rights reserved

- Protected Ancient Monument or area of Designated Wreck
- Monument formally proposed by Historic Scotland for scheduling or wreck for designation
- + Listed Historic Building
- Undesignated wreck
- Known ancient monument
- Site found by this survey
- Site complex

Built Heritage & Archaeology



1. Doodilbeg

NR 348 752

5.2 Km

Rock platform

Coast edge <5m

Raised beach etc.

The coast edge is covered by shingle, interspersed by frequent rock outcrops. Cliffs lie generally 20m - 40m back from the coast edge but often come close to the coast in the form of rocky spurs. Storm beaches were noted in many small coves. The immediate hinterland is low lying, flat and grassy. Occasionally, old beach deposits could be seen in the hinterland, and these areas are interpreted as raised beach. The wider hinterland is rough and overgrown.

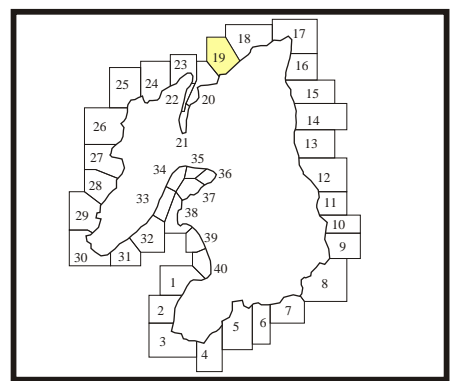


Historic Scotland Licence No. 100017509 2003
© Crown copyright. All rights reserved

- Foreshore**
- Rock platform
 - Mainly sand
 - Mainly alluvial/marine mud
 - Marsh

- Hinterland**
- Drift
 - Drift on visible rock
 - Raised beach etc.
 - Blown sand
 - Glacial sand/gravel
 - Alluvium

- Modifiers**
- Low edge <5m
 - Cliff >5m
 - Man made barrier
 - Shingle/storm bank
 - Human disturbance



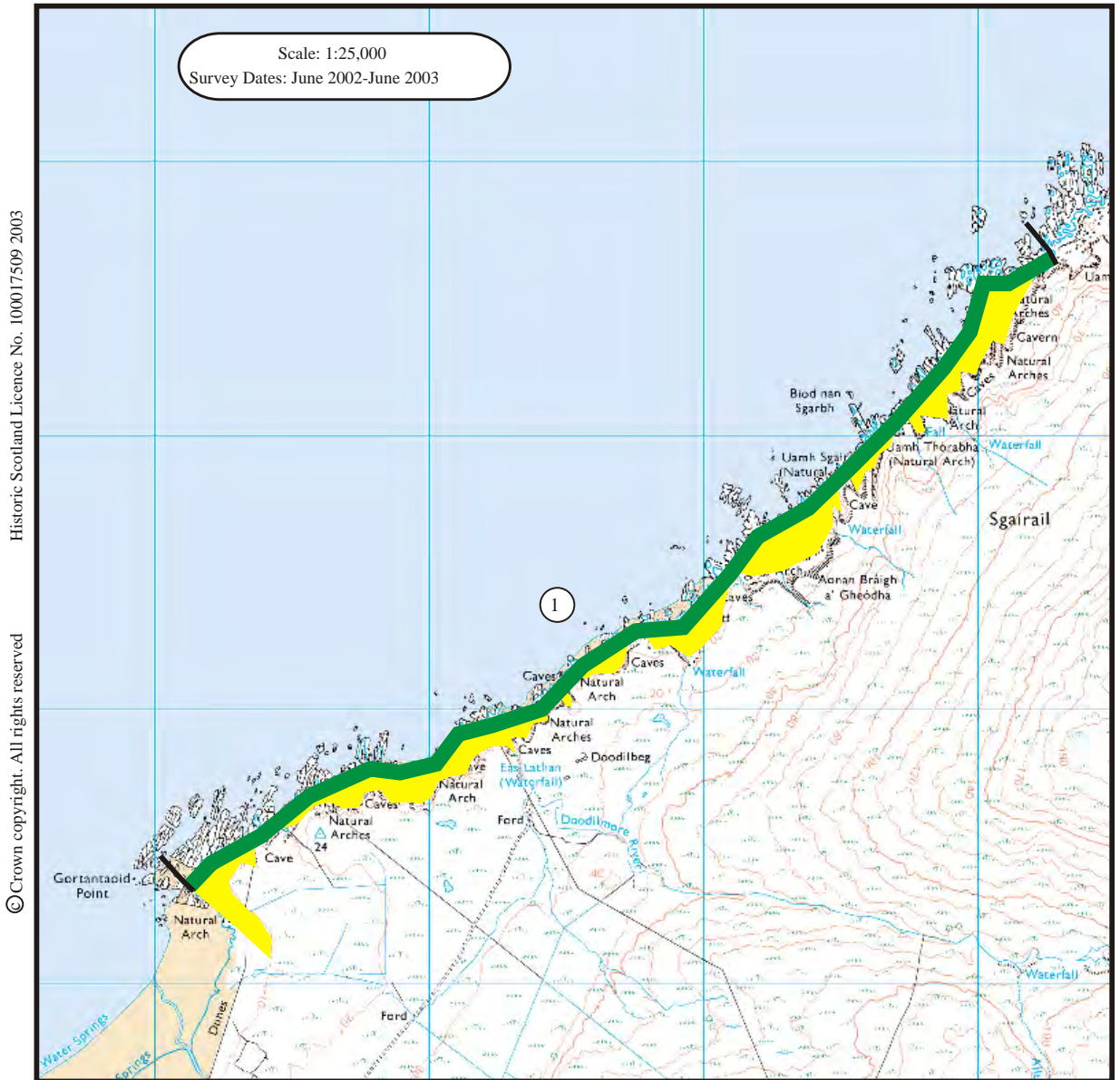
1. Doodilbeg

NR 348 752

5.2 Km

Stable

The coast edge in this unit is rocky and stable. No signs of erosion.



- Erosion Class
- Definitely Accreting
 - Accreting or Stable
 - Stable
 - Eroding or Stable
 - Definitely Eroding
 - Accreting and Eroding
 - No access
 - Land below 10m

