

MAP 13- DEIL MA CARE TO BALLINBREICH CASTLE

Built heritage and archaeology - Dense undergrowth at the coast edge limited the effectiveness of the foreshore survey by making detection and identification of all but the largest features almost impossible. Monuments noted vary from several fishing lodges and associated buildings (Site description 6) to the important 14th Century Ballinbreich Castle (NO22SE8). This Protected Ancient Monument is almost inaccessible because it has become densely overgrown with shrubs and mature broad leaf trees growing inside and outside the castle walls which in itself may be cause for concern. The NMRS records the location of a chapel site (NO22SE10) close to the main castle remains, the foundations of which remained visible in 1845. There was no evidence of this site although the dense undergrowth at the coast edge and the intensive arable cultivation of the adjacent fields may have obscured any remains.

Hinterland geology and coastal geomorphology; Erosion-The foreshore is narrow as the deep tidal channels of the Tay flow close to the edge. Muds dominate the lower foreshore, with dense marsh and reed development on the upper foreshore. The low coast edge is composed of glacial sand and gravels, with raised beach deposits. In front of the lodges manmade stonewalls protect the coast edge suggesting that erosion has been a problem in the past. The marsh area widens to the west and a dense forested area overlying the glacial deposits restricts access onto the foreshore.

MAP 13 DEIL MA CARE TO BALLINBREICH CASTLE

EROSION UNITS

1

NO28582149

0.5 km

Eroding or stable

Reeds and marsh stabilise the muds on the foreshore. The low coast edge is locally undercut as the sandy drift deposits are susceptible to erosion. Boulders of basalt have been placed along the edge at vulnerable locations.

2

NO28352115

0.5 km

Stable

Reed and marsh beds protect the foreshore by stabilising the muds and absorbing wave energy. The lodge is protected with a stone wall and basalt boulders.

3

NO28002099

0.4 km

Definitely eroding

A fence has come adrift the low undercut edge. The sandy drift deposits are susceptible to erosion where there are no reeds to protect the low edge. Boulders have been placed along the edge to reduce the erosion.

4

NO27132052

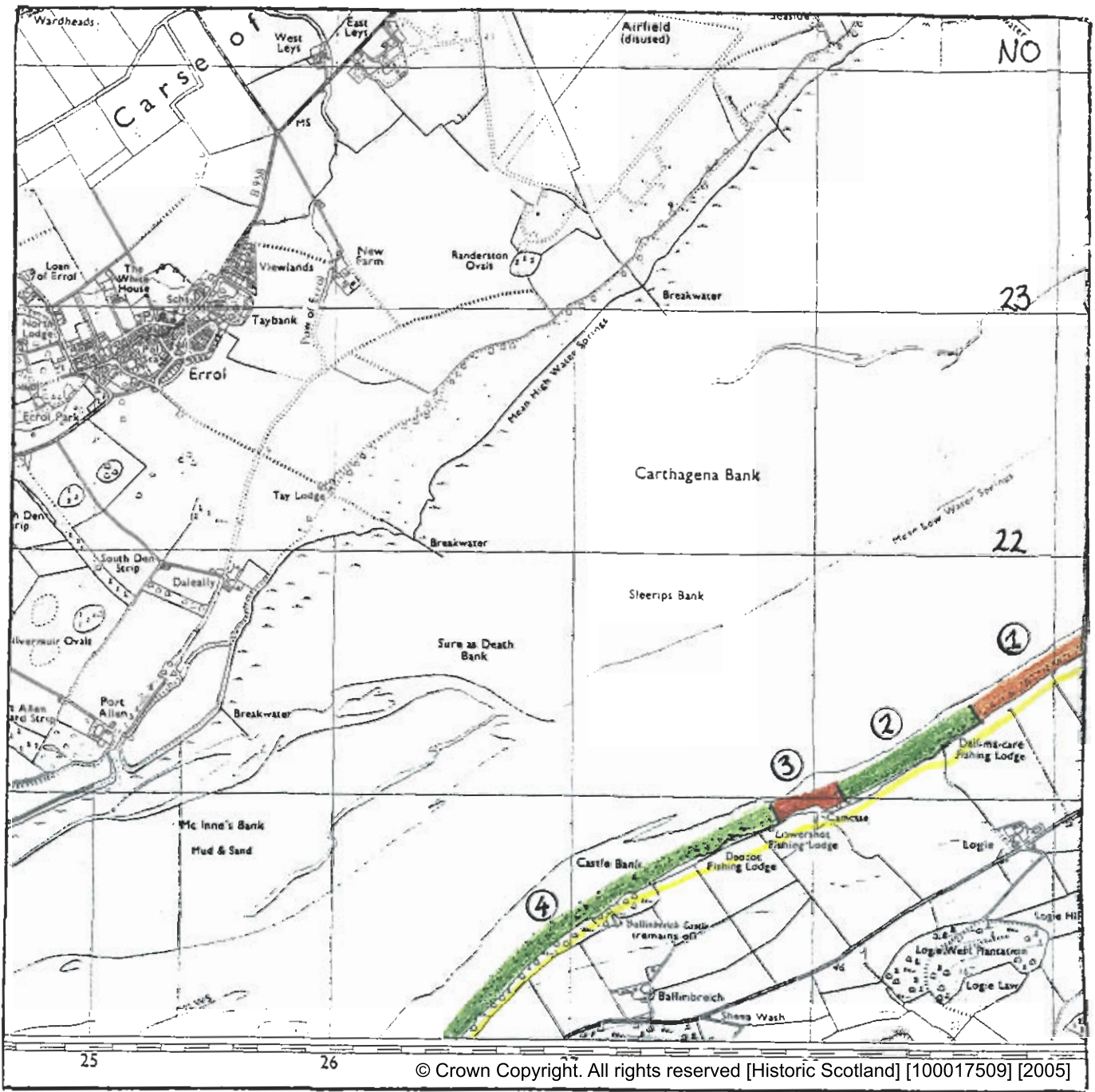
2 km

Stable

Reeds along the foreshore stabilise the muds and help to protect the coast edge. In front of the fishing lodge flattened reeds illustrate the effects of strong wave action, boulders have been placed along the edge to provide additional protection. To the west, the reeds thicken and dense woodland along the edge stabilises the sandy glacial deposits.

MAP CLASS: **EROSION**
 (Assessment date: 16. 17 October 1996)
 NO 22/22. Scale 1:25,000

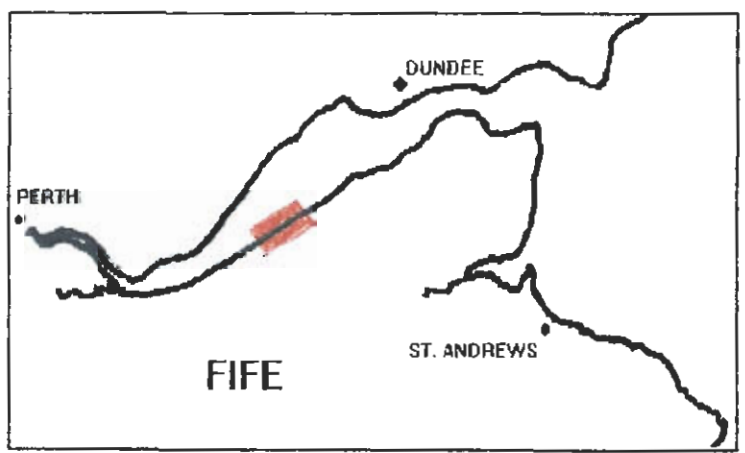
DEIL MA CARE TO BALLINBREICH CASTLE



© Crown Copyright. All rights reserved [Historic Scotland] [100017509] [2005]

KEY

Erosion class	Staedtler colour	Colour
Definitely Accreting	ultramarine blue	
Accreting or stable	light blue	
Stable	light green	
Eroding or stable	orange	
Definitely Eroding	scarlet	
Both accreting and eroding	purple	
No access	blank	
Land below 10m	canary yellow	



MAP 13 DEIL MA CARE TO BALLINBREICH CASTLE

GEOLOGY UNITS

1

NO28682149

0.5 km

Marsh

Shingle

Raised beach and marine deposits with glacial sand and gravel

The foreshore is composed of silty muds which create mud flats with dense marsh and reed growth. The upper foreshore is composed of shingle and cobbles with a storm ridge at the low coast edge. The hinterland consists of raised beach and marine deposits with glacial sands and gravels.

2

NO28352115

0.5 km

Marsh

Low edge (<5 metres)

Glacial sand and gravel with raised beach and marine deposits

Marsh and reeds stabilise the muds of the foreshore. The low edge is composed of glacial sand and gravel. Along the frontage of the lodge human disturbance in the form of tipped wastes and basaltic boulders protects the edge.

3

NO28012099

0.4 km

Alluvial /marine muds

Shingle

Raised beach and marine deposits with glacial sand and gravel

Thick alluvial muds compose the lower foreshore, the steep upper foreshore is composed of coarse shingle, with a shingle bank at the coast edge.

4

NO277652083

0.7 km

Marsh

Low edge (<5 metres)

Glacial sand and gravel with raised beach and marine deposits

Marsh and reed beds create mud flats on the foreshore. Human disturbance along the coast edge of the fishing lodges involves a sloping wall of boulders.

5

NO26992045

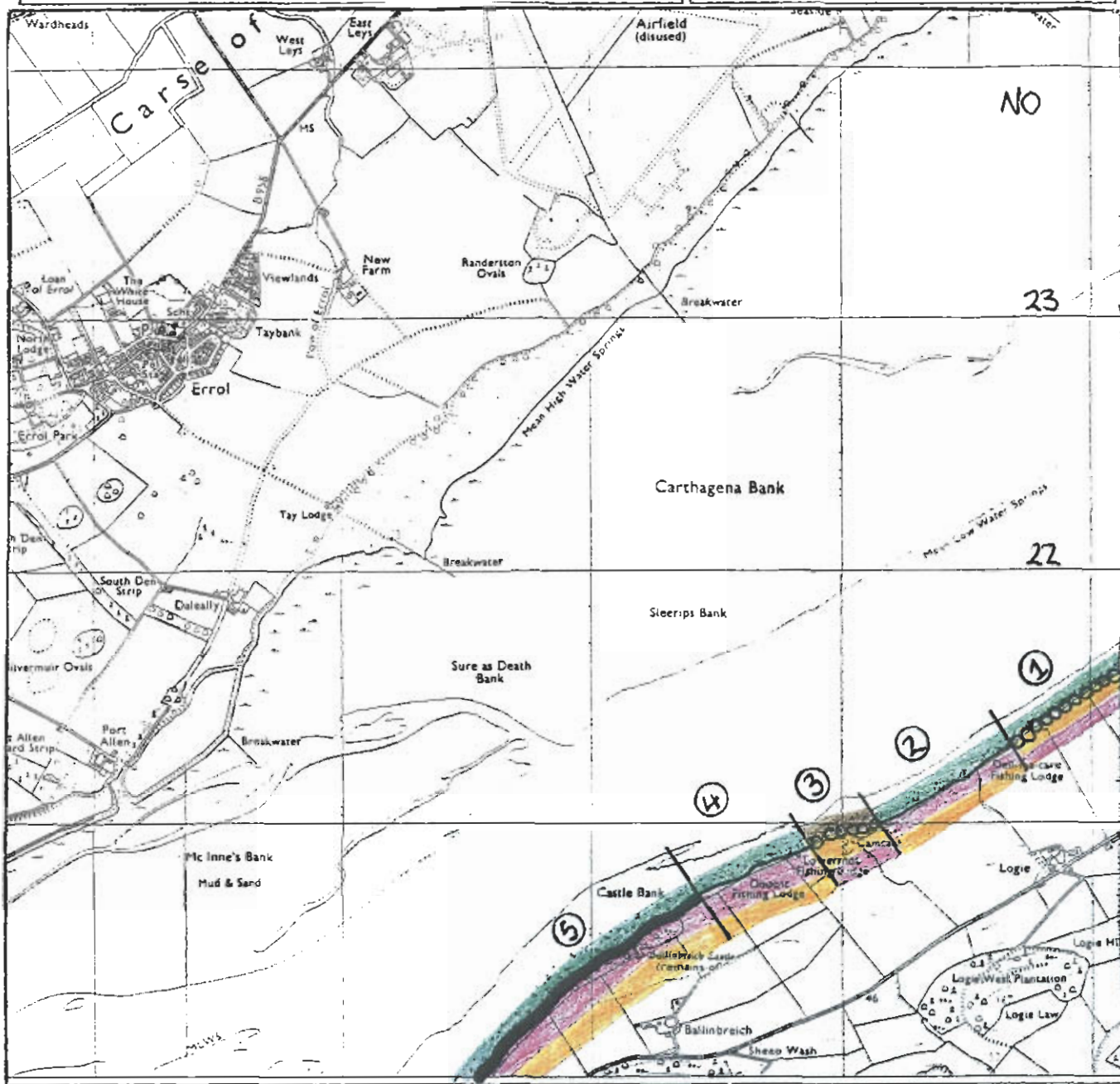
1.2 km

Marsh

Cliff (>5 metres)

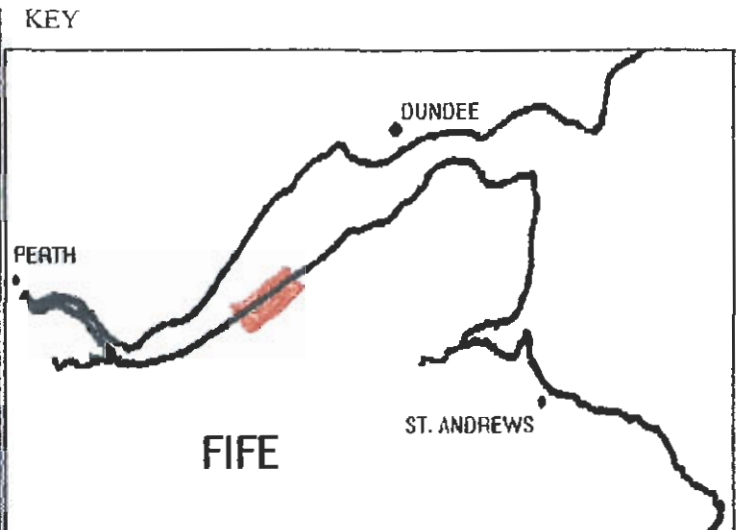
Glacial sand and gravel with raised beach and marine deposits

Marsh and reeds stabilise the muds on the foreshore. The high coast edge with a dense vegetation cover is composed of glacial deposits.



© Crown Copyright. All rights reserved [Historic Scotland] [100017509] [2005]

Hinterland Geology	Staedler colour	
Drift, boulder clay	light grey	
Drift, boulder clay over visible rock	Caran D'ache violet	
Raised beach and marine deposits	golden brown	
Blown sand	peach	
Glacial sand and gravel	magenta	
Alluvium	grass green	
Coast edge		
Low edge (< 5m)	thin black line	
Cliff (> 5m)	solid black line	
Man made barrier	black line with spines	
Shingle beach	small circles	
Human disturbance	black carats	
Coastal Geomorphology		
Mainly rock platform	vermillion	
Mainly sand	indigo	
Mainly alluvial/marine mud	sienna brown	
Marsh	lime green	



MAP 13 - DEIL MA CARE TO BALLINBREICH CASTLE

BUILT HERITAGE AND ARCHAEOLOGY UNITS

Sites behind the coast edge

NO28082090

Building marked "Camcase " on O.S. 1:25,000 - single storey cottage with gable end facing to Tay and 2 wings at rear.

19th to 20th Centuries

Fair

Nil

***See site description 6**

Sites on the coast edge and foreshore

NO28572124

Deil ma Care Fishing Lodge - single storey stone cottage

Uncertain

Poor

Survey

***See site description 6**

NO22SE25

CAMCASE BARROW: SQUARE (POSSIBLE); CROPMARKS

Uncertain

Not seen

Nil

NO27862091

Lowershot Fishing Lodge - single storey cottage with more recent extension to rear

19th to 20th Centuries

Poor

Nil

***See site description 6**

NO27522083

Doocot Fishing Lodge - single storey cottage and more recent lean to shed at gable end

19th -20th Centuries

Fair

Nil

***See site description 6**

NO22SE8

BALLINBREICH CASTLE
CASTLE AND CROSS

PROTECTED ANCIENT MONUMENT

14th Century with 16th and 17th Century additions

Poor

Monitor

NO22SE10

BALLINBREICH CASTLE

CHAPEL

PROTECTED ANCIENT MONUMENT

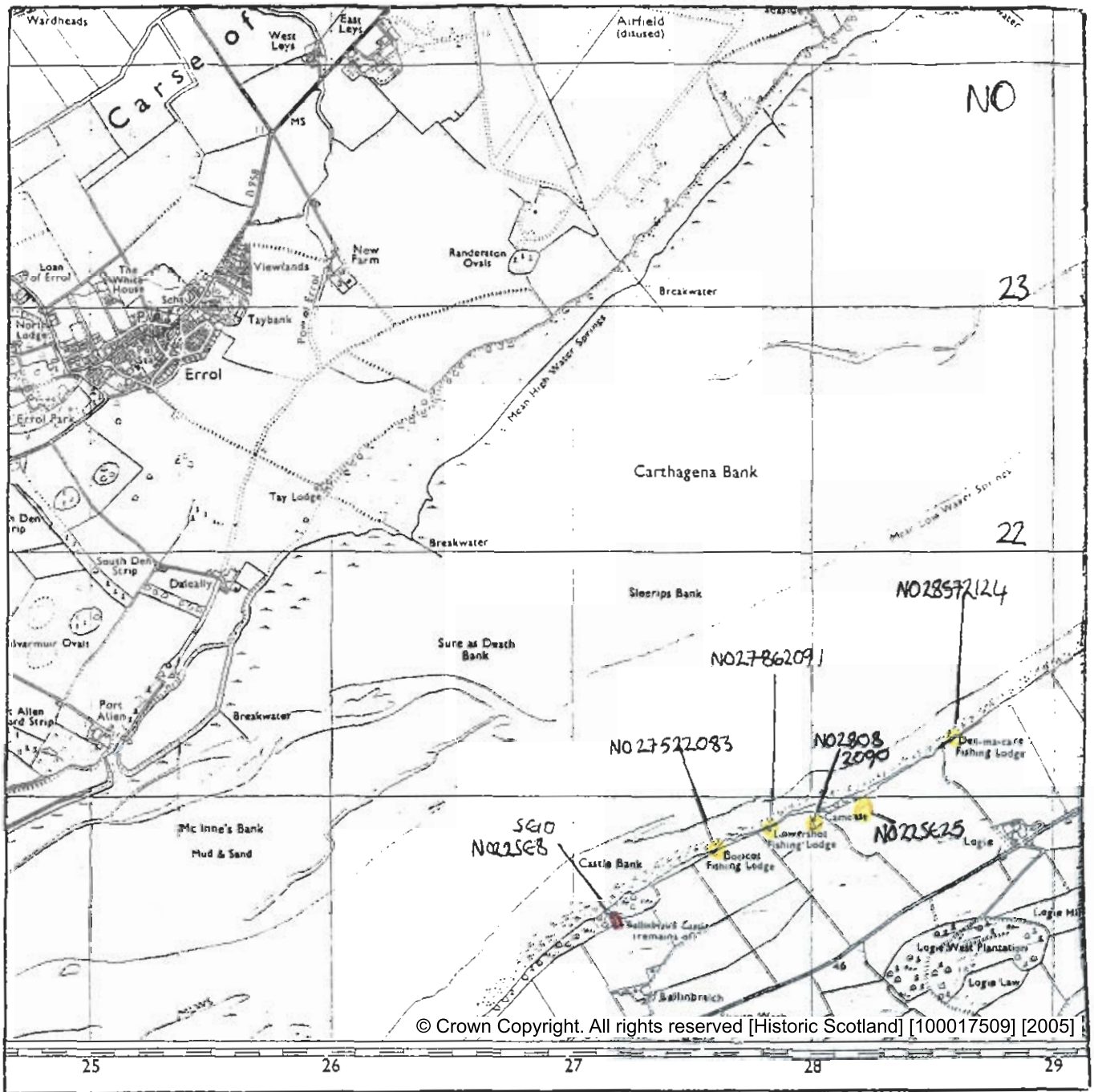
15th Century

Not seen

Nil

MAP CLASS: Built Heritage and Archaeology
 (Assessment date: 16. 17 October 1996)
 NO 22/32. Scale 1:25,000

DEIL MA CARE TO BALLINBREICH CASTLE



KEY

Site location	Symbol	Standard colour	Significance
NGR e.g. NO12345678	solid roundel	orange	Protected Ancient Monument
	stars	orange	Listed Historic Building
NMRS e.g. NO28NW35	open roundel	orange	Monument formally proposed by Historic Scotland for designation
	solid roundel	yellow ochre	Other known monument
	dashed outline	yellow ochre	Designated landscape
	open roundel	yellow ochre	Undesignated wreck
	area	green	Insufficient information, more work needed (no access, or not walked)
	area	blue	Probably archaeologically sterile

