

Coll

Map 9: Sgeir Dubh to Sloc na Criche

From the centre of Crossapol Bay, this map section extends to the southernmost point on Coll at Bacan Seileach and, from there, north around Calgary Point to finish at the E end of Traigh Halum on the SW coast of the island. Beyond Traigh Crossapol, the coastal landscape becomes more rugged and rocky, but remains low lying. From Port a'Chromain almost to Calgary Point, the coast edge is sandy and the hinterland comprises undulating, relatively fertile land. The rugged, rocky coastline to the N of Calgary Point eventually gives out to a sandy shore at Traigh Halum. There is some modern settlement in the area at Caoles and Crossapol.

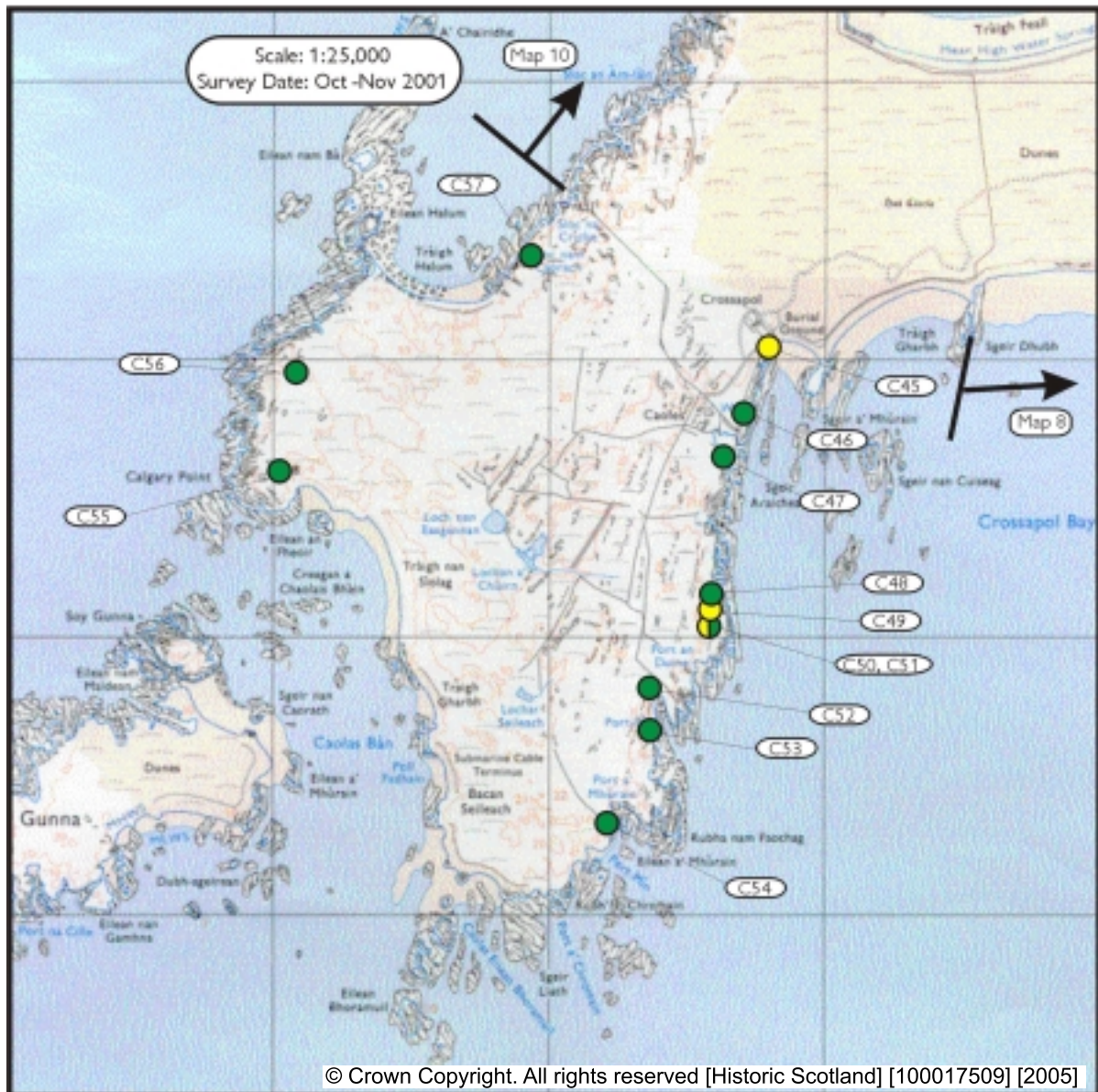
The first section of coastline in this area, extending to Crossapol, is formed by low lying soft sediments, backed by sand dunes and is eroding. There is evidence of previous land slip in the area of Crossapol church yard; the area has now been buttressed and the affected area is now under grass cover and appears temporarily stable. From this point to the southern tip of the promontory to Calgary Point, the coast edge is formed by rock platform and is stable. The west facing coast, facing towards the island of Gunna, is low lying and formed from blown sand deposits. There are areas of erosion within this area, but large sections are stable or eroding only gradually. From Calgary Point to the end of this map section is hard rock platform which is stable.

The sites identified to the south and west of this map section (C55, 56, 57) represent the remains of extensive cultivation. No signs of associated settlement were noted and the scale of the fields suggests that they are estate lands, cultivated in the period 18-20th C. The site of an early chapel at Crossapol (C45) is surrounded by a burial ground which contains carved stones of the Iona school, dating to 14-15th C. Of particular interest is a second possible chapel site identified to the N of Port an Duine (C51). It is alleged that a chapel once stood in this area, but a site has not previously been identified. The remains recorded here are of a size and plan as to suggest the possibility that they may be a chapel, although the alignment is not exactly correct. The presence of an adjacent wall may be part of an enclosure, possibly to a graveyard.

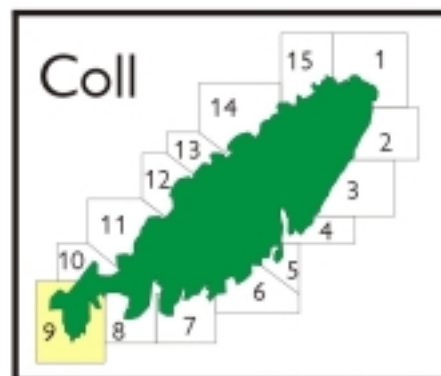
Built Heritage &
Archaeology

Coll
Map 9

C45 (NM15SW9) NM12795 53062 Crossapol Burial ground and site of chapel 14-18th/18-20th C Fair Monitor	C50 NM 12581 52072 Port an Duine (N of) Two mounds Unknown Poor Survey	C55 NM 11063 52540 Calgary Point Field boundary 18-20th C Fair Nil
C46 NM 12698 52810 Caoles (SE of) Mound Unknown Fair Monitor	C51 NM 12586 52070 Port an Duine (N) Structural remains, possible site of early chapel and burial ground Unknown Fair Survey	C56 NM 11091 52977 Calgary Point (N of) Cultivated land, clearance cairns 18-20th C Good Survey
C47 NM 12610 52676 Caoles (SE of) Settlement, field systems, slipways 18-20th C Fair Survey	C52 NM 12356 51834 Port Ban (N of) Land boundary 18-20th C Fair Nil	C57 NM 11925 53289 Eilean Halum (SW of) Earthen boundary banks 18-20th C Fair Survey
C48 NM 12573 52186 Caoles (S of) Field boundary 18-20th C Fair Nil	C53 NM 12338 51696 Port Ban Structure: Shed or Corn drying kiln 18-20th C Fair Survey	
C49 NM 12578 52105 Caoles (S of) Mound Unknown Fair Monitor	C54 NM 12192 51336 Port a'Chromain Field boundary 18-20th C Fair Nil	



- Built Heritage & Archaeology
- Protected Ancient Monument or area of Designated Wreck
 - Monument formally proposed by Historic Scotland for scheduling or wreck for designation
 - + Listed Historic Building
 - Undesignated wreck
 - Known ancient monument
 - Site found by this survey
 - Site complex



1. Traigh Gharbh

NM 132 532

1.0 Km

Sandy foreshore

Coast edge <5m

Drift/rock interface not visible

This unit encompasses the western portion of a wide sandy beach backed by an extensive dune system.

2. Caoles

NM 126 520

3.2 Km

Rock platform, some cobble cover

Drift/rock interface occasionally visible

A steeply sloping coast edge, some cobble cover in small coves. The hinterland is rough grazing, poorly drained in places. Sheep stocking levels appear to be relatively high in this area, producing short cropped grass.

3. Traigh nan Siolag

NM 115 518

2.2 Km

Sandy foreshore

Coast edge < 5m

Drift/rock interface not visible

A long sandy beach backed by an extensive dune system. The hinterland here is used as rough grazing for sheep and cattle.

4. Traigh Halum

NM 112 532

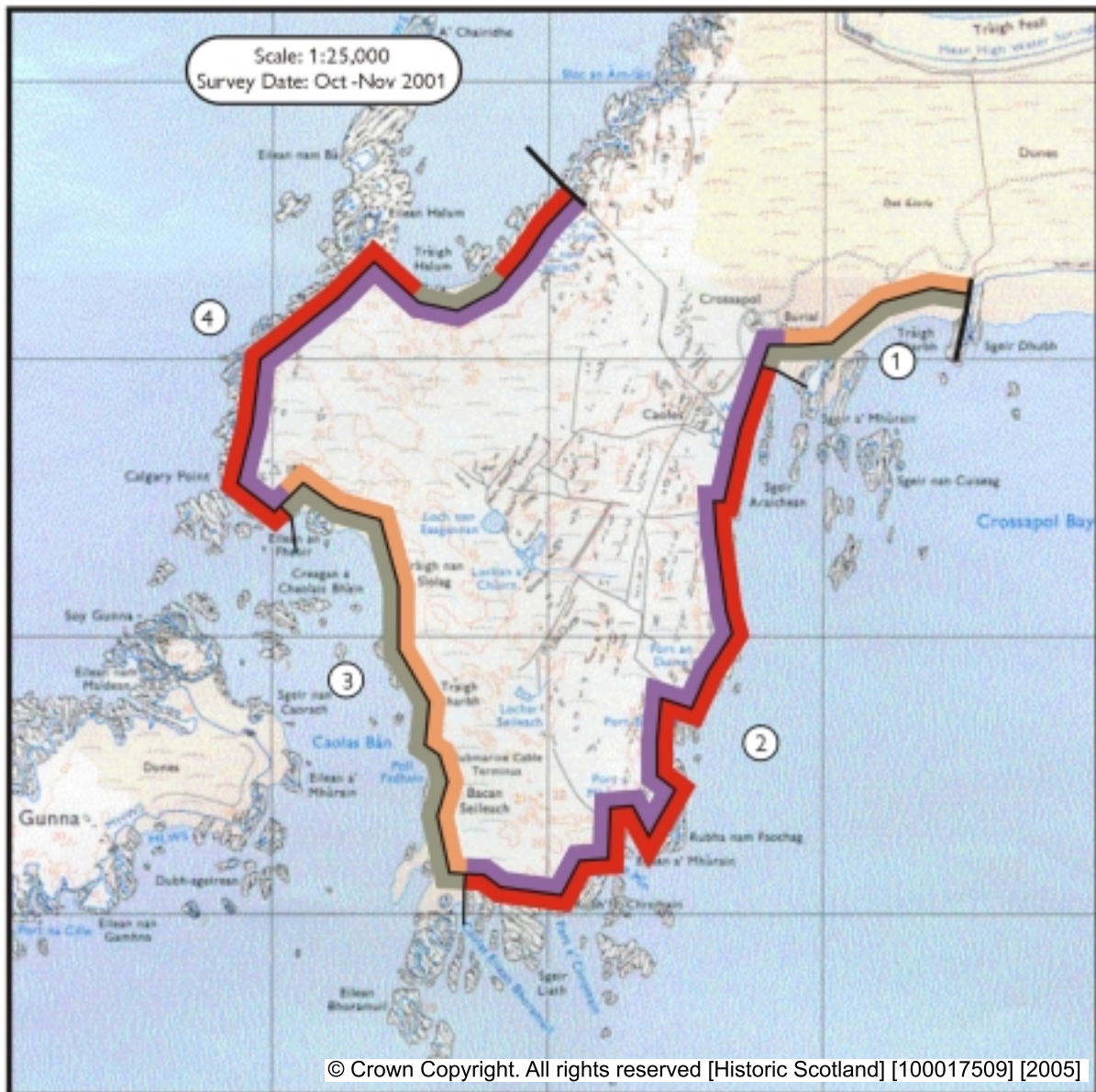
2.6 Km

Rock platform, some cobble cover

Coast edge <5m

Drift/rock interface occasionally visible

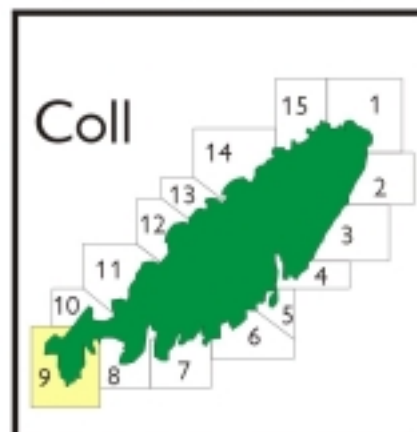
Rocky coast edge sloping steeply to sea. Cobble cover in small coves. The unit includes Traigh Halum, a sandy beach with some cobble cover towards its' west end. The hinterland is fairly well drained rough grazing; closely cropped by sheep.



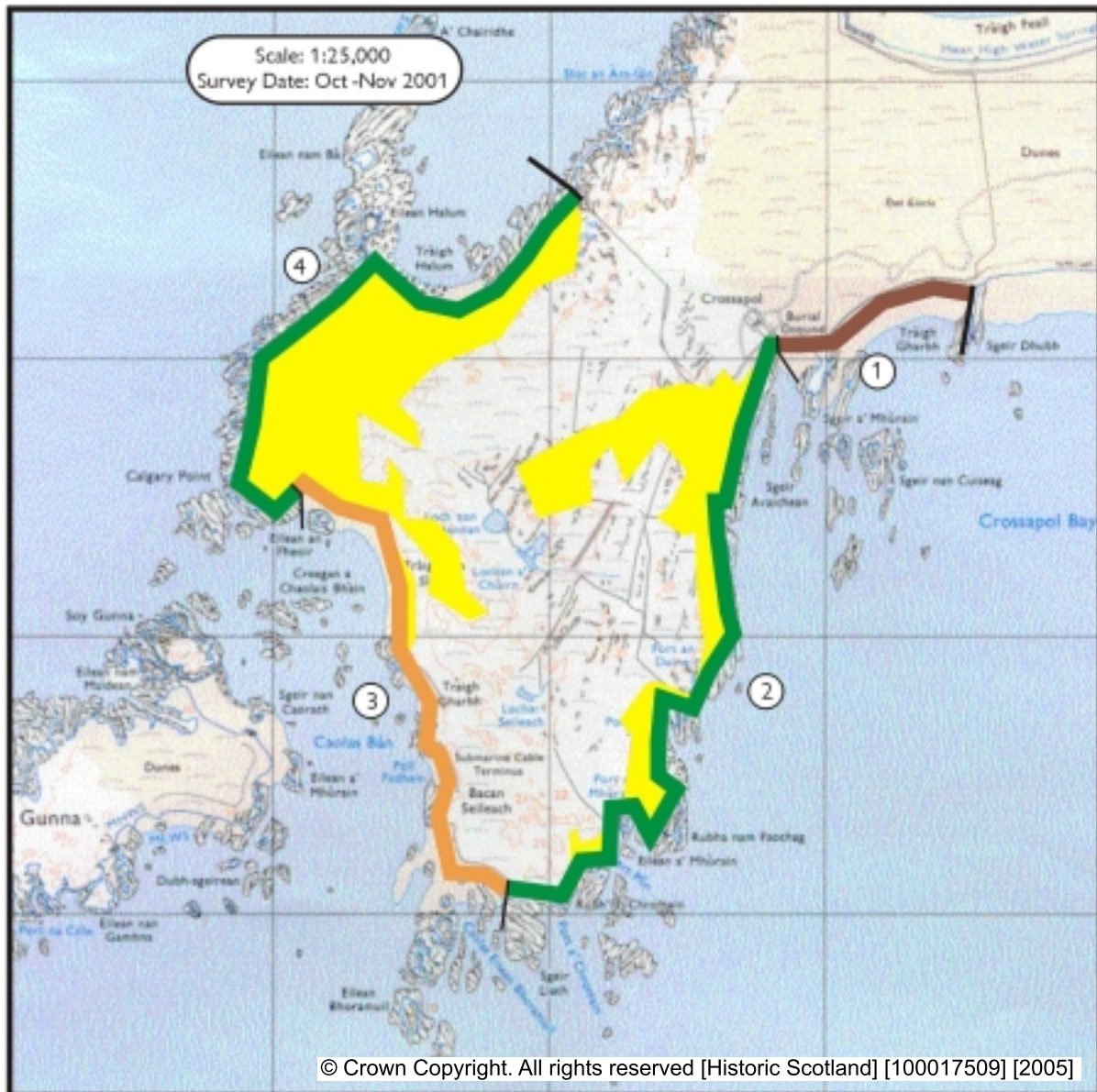
- Foreshore**
- Rock platform
 - Mainly sand
 - Mainly alluvial/marine mud
 - Marsh

- Modifiers**
- Low edge <5m
 - Cliff >5m
 - Man made barrier
 - Shingle/storm bank
 - Human disturbance

- Hinterland**
- Drift
 - Drift on visible rock
 - Raised beach etc.
 - Blown sand
 - Glacial sand/gravel
 - Alluvium



<p>1. Traigh Gharbh NM 132 532 0.8 Km Definitely Eroding The dunes which form the coast edge within this unit appear to be actively eroding; fence lines are suspended in mid air in places</p>	<p>3. Traigh nan Siolag NM 115 518 2.2 Km Eroding to stable The coast edge within this unit is dunes. There are limited signs of erosion in the form of small exposures in the coast edge but no coherent large-scale erosion.</p>
<p>2. Port an Duine NM 126 520 3.4 Km Stable The coast edge within this unit is rocky and there is little sign of any recent erosion, however there has been landslip within the burial ground at Crossapol. This burial ground lies on the coast edge.</p>	<p>4. Eilean nam Ba NM 112 532 2.6 Km Stable Rocky coast edge with little sign of recent erosion.</p>



- Erosion Class
- Definitely Accreting
 - Accreting or Stable
 - Stable
 - Eroding or Stable
 - Definitely Eroding
 - Accreting and Eroding
 - No access
 - Land below 10m

