

## Coll

### Map 6: Fiskary to Eilean Maol Mor

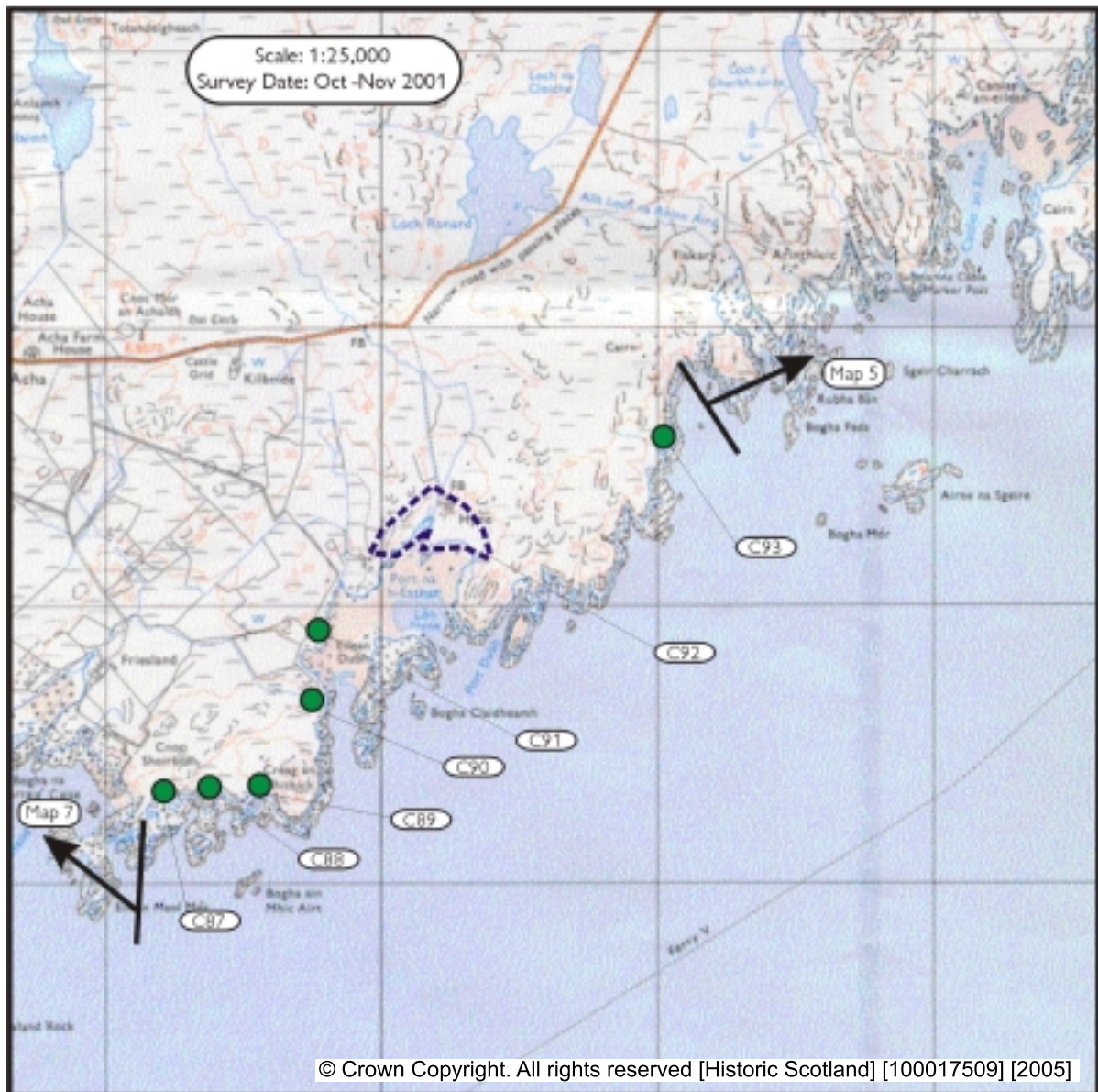
This map section extends southwards from Fiskary towards Friesland Bay. The only modern settlement in this area is at Hyne. The coastline varies along this stretch, taking in low lying rock shores with higher land behind, sandy bays and high rocky ground which slopes steeply to the coast edge.

The coast edge for most of this section is formed from rock platforms and is stable. It is only around the low lying shores of Port na hEathar, where the coast edge is formed from soft sediments, that active erosion is apparent. The coast edge at the inner shore of the bay is formed here from salt marsh, suggesting that the erosion is of a gradual nature.

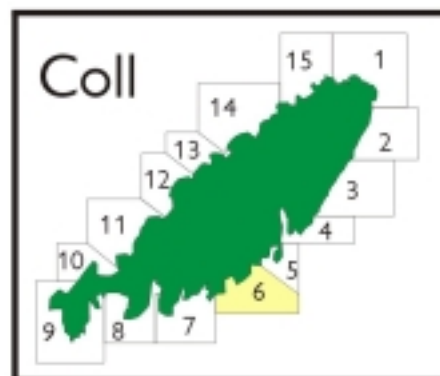
Other than around the shores of Port na h-Eathar by Hyne, the coastal vegetation is high and it is frequently difficult to locate archaeological remains amongst the dense growth of heather and bracken. The identification of three sites of possible prehistoric date within this area may, however, indicate that further remains are present both on the coast and within the wider hinterland. More detailed field survey, undertaken when the vegetation has died back, is to be recommended. The sites identified include a possible hut circle (C93), a cairn (C88) and an enclosed settlement (C89). Of these, the latter is of particular interest. It comprises of a group of curvilinear structures, some 6-8m in diameter, which lie within a stout enclosure. The site is located on a raised beach and may be of earlier prehistoric date. More recent settlement and remains associated with a fishing industry are centred on Hyne and the W side of Port na h-Eathar. There are numerous plots of cultivable land in this area and it is likely to have formed a focus for settlement over an extended period of time. More detailed field survey of the hinterland may succeed in identifying sites which pre-date the surviving 18-20th C remains.

---

C87	C91
NM 19252 53375	NM 19707 53824
Cnoc Shoirbidh (S of)	Port na Heathar (W side)
Enclosure	Probable abandoned township, land boundaries and slipways
18-20th C	18-20th C
Fair	Fair
Nil	Survey
C88	C92
NM 19355 53414	NM 19966 54144
Cnoc Shoirbidh (SE of)	Hyne
Cairn	Settlement and port area
Unknown	18-20th C
Fair	Good
Monitor	Survey
C89	C93
NM 1955 5334	NM 2103 5461
Creag an Fhitich (SW of)	Hyne (NE of)
Possible enclosed settlement	Possible hut circle
3rd-1st mill BC	3rd-1st mill BC
Good	Fair
Survey	Survey
C90	
NM 19753 53667	
Eilean Dubh (opposite W side of)	
Land boundary and enclosure	
18-20th C	
Fair	
Nil	



- Built Heritage & Archaeology
- Protected Ancient Monument or area of Designated Wreck
  - Monument formally proposed by Historic Scotland for scheduling or wreck for designation
  - + Listed Historic Building
  - Undesignated wreck
  - Known ancient monument
  - Site found by this survey
  - Site complex



---

1. Port Dubh

NM 208 541

2.4 Km

Rock platform, occasional cobble cover

Coast edge <5m

Drift/ rock interface occasionally visible

Coast edge is rocky and frequently steeply sloping. There is limited cobble cover in coves.

The hinterland is very rough grazing containing heather and pockets of scrub willow.

3. Creag an Fhithich

NM 197 532

1.9 Km

Rock platform

Coast edge <5m

Drift/ rock interface occasionally visible

Coast edge is rocky and frequently steeply sloping. The hinterland is very rough grazing; it contains occasional pockets of scrub willow.

2. Hyne

NM 200 542

1.2 Km

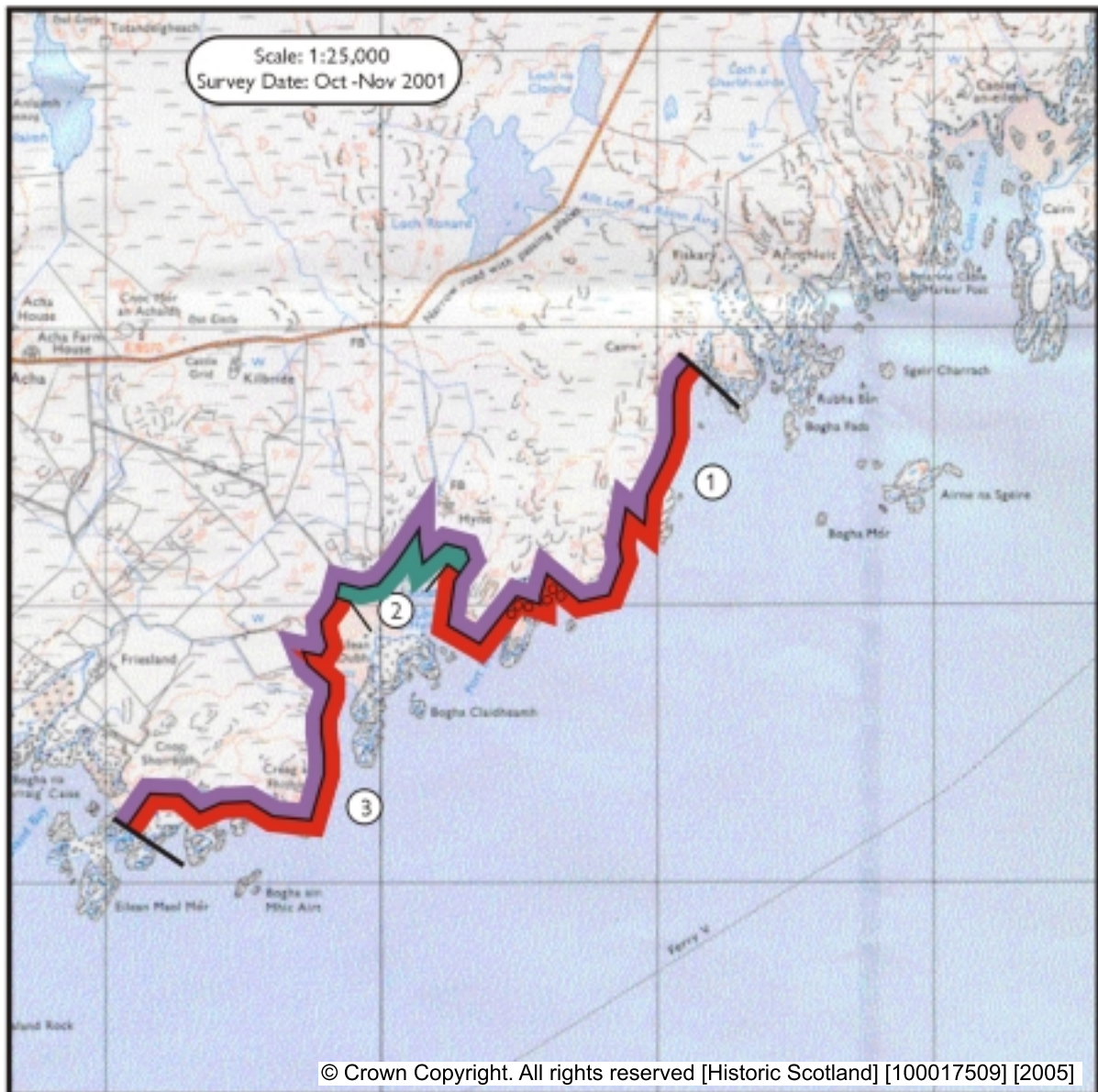
Salt marsh foreshore

Coast edge <5m

Drift/rock interface not visible

Coast edge in this unit is low lying salt marsh.

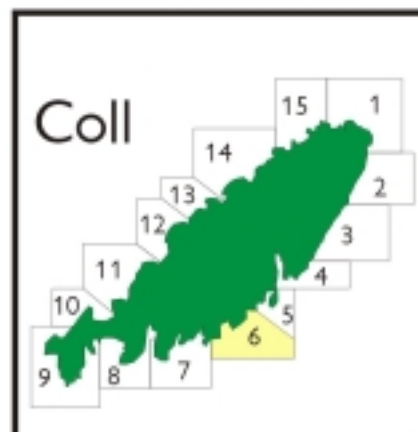
The hinterland is rough grazing.



- Foreshore**
- Rock platform
  - Mainly sand
  - Mainly alluvial/marine mud
  - Marsh

- Modifiers**
- Low edge <5m
  - Cliff >5m
  - Man made barrier
  - Shingle/storm bank
  - Human disturbance

- Hinterland**
- Drift
  - Drift on visible rock
  - Raised beach etc.
  - Blown sand
  - Glacial sand/gravel
  - Alluvium



---

1. Port Dubh NM 208 541 2.4 Km Stable A rocky coast edge with no sign of recent erosion.	3. Creag an Fhithich NM 197 532 1.9 Km Stable A rocky coast edge with no sign of recent erosion.
2. Hyne NM 200 542 1.2 Km Eroding to stable This unit is low lying. The coast edge here is being inundated by the sea at high tide and has been classed as eroding to stable.	

