

Coll

Map 4: Eilean nam Muc to Arinagour

This map section covers the area from the rugged east coast, rounding a high rocky knoll to extend around the shores of Loch Eatharna. The principle settlement on the island, the village of Arinagour, is located on the west side of this inlet and the modern pier, which serves the regular ferry crossing to Oban, lies at the south-eastern end of it. Leaving the rugged and rocky wilderness behind, the inner shores of the loch are lower lying and fringed with more fertile land.

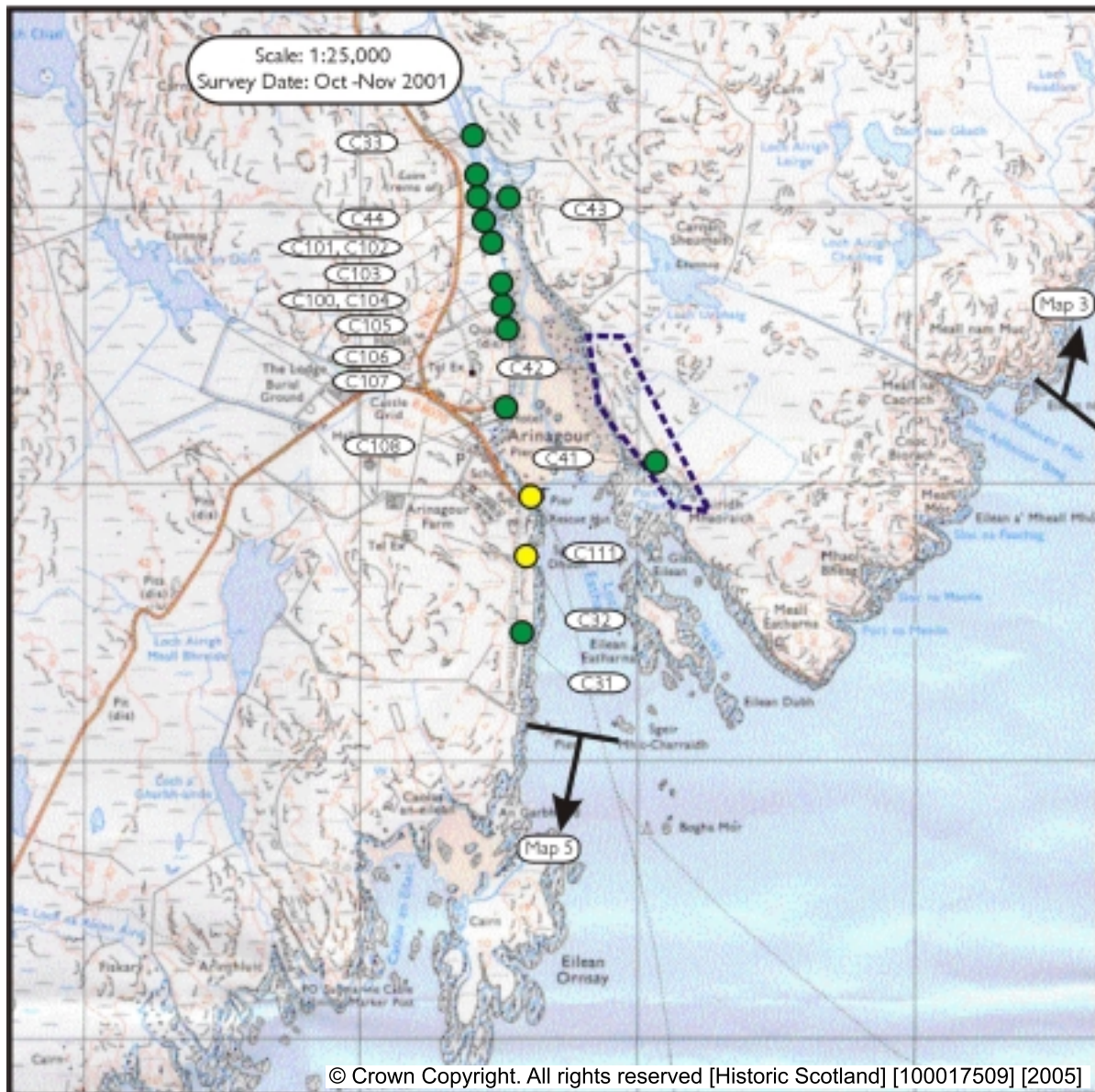
The coast edge in the northern part of this section is formed from a sloping rock platform and is stable. The coast edge diminishes in height mid way along the northern shore of Loch Eatharna, gradually giving away to low lying salt marshes at the head of the bay. This area is eroding gradually. The coast edge which fringes Arinagour and the area to the south is low lying but rocky and stable. Several sea walls and coastal defences have been built along the coast edge within the village and there are harbour defences in the area of the modern pier.

The majority of the sites noted in this area are of 18-20th C date and many are related to the now diminished fishing industry. A number of slipways and small piers (C103, 104, 106, 107) are located at the head of the bay, in shallow tidal waters to the north of Arinagour. A probable track (C107) winds northwards from the village towards this inner port. Two stout walls built across the river at the head of the bay (C33, 44) may be the remains of fish traps; they are also wide enough to have served as small foot bridges. Abandoned settlements of probable 18-20th C date are situated on both sides of the bay (C42, 100, 105, 32), reflecting the once more dispersed nature of settlement in the area. A concentration of large stones to the SW of Loch Urbhaig may be the remains of a structure, although the nature and date of these remains is not readily apparent.

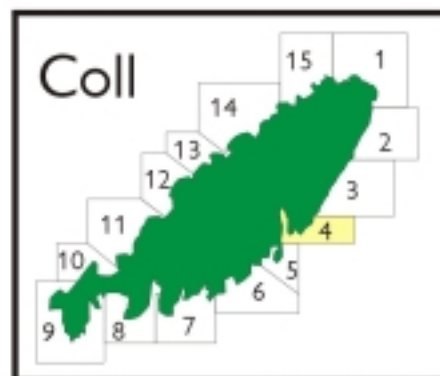
Built Heritage &
Archaeology

Coll
Map 4

C31 NM 22588 56473 Arinagour Pier (N of) Enclosure, ruinous 18-20th C Fair Nil	C100 NM 22444 57874 Arinagour (N of) Enclosure, possible house platform 18-20th C Fair Nil	C107 NM 22549 57561 Arinagour (N of) Track way, slipway 18-20th C Fair Nil
C32 NM 22580 56754 Arinagour Pier (N of) Settlement, enclosures, cultivated land, abandoned 18-20th C Fair Nil	C101 NM 22412 58073 Arinagour (N of) Ford, troughs 18-20th C Fair Nil	C108 NM 22544 57244 Arinagour (N of) Rock cut basins Unknown Good Nil
C33 NM 22394 58241 Arinagour Fish trap/crossing place 18-20th C Good Nil	C102 NM 22397 58046 Arinagour (N of) Enclosure 18-20th C Fair Nil	C111 (NM25NW40) NM 22650 56940 Arinagour Harbour 18-20th C Good Nil
C41 NM 23062 57068 Airidh Mhaoraich Slipway 18-20th C Fair Nil	C103 NM 22453 57930 Arinagour (N of) Slipways 18-20th C Fair Nil	
C42 NM 230 571 Airidh Mhaoraich Settlement, enclosures and land boundary 18-20th C Fair Nil	C104 NM 22492 57859 Arinagour (N of) Slipway/track 18-20th C Fair Nil	
C43 NM 22532 58012 Loch Urbhaig (SW of) Possible structural remains Unknown Fair/poor Survey	C105 NM 22507 57716 Arinagour (N of) Structure: house reused as enclosure 18-20th C Fair Nil	
C44 NM 22433 58133 Arinagour (N of) Fish trap/crossing place 18-20th C Fair Nil	C106 NM 22542 57668 Arinagour (N of) Slipways 18-20th C Fair Nil	



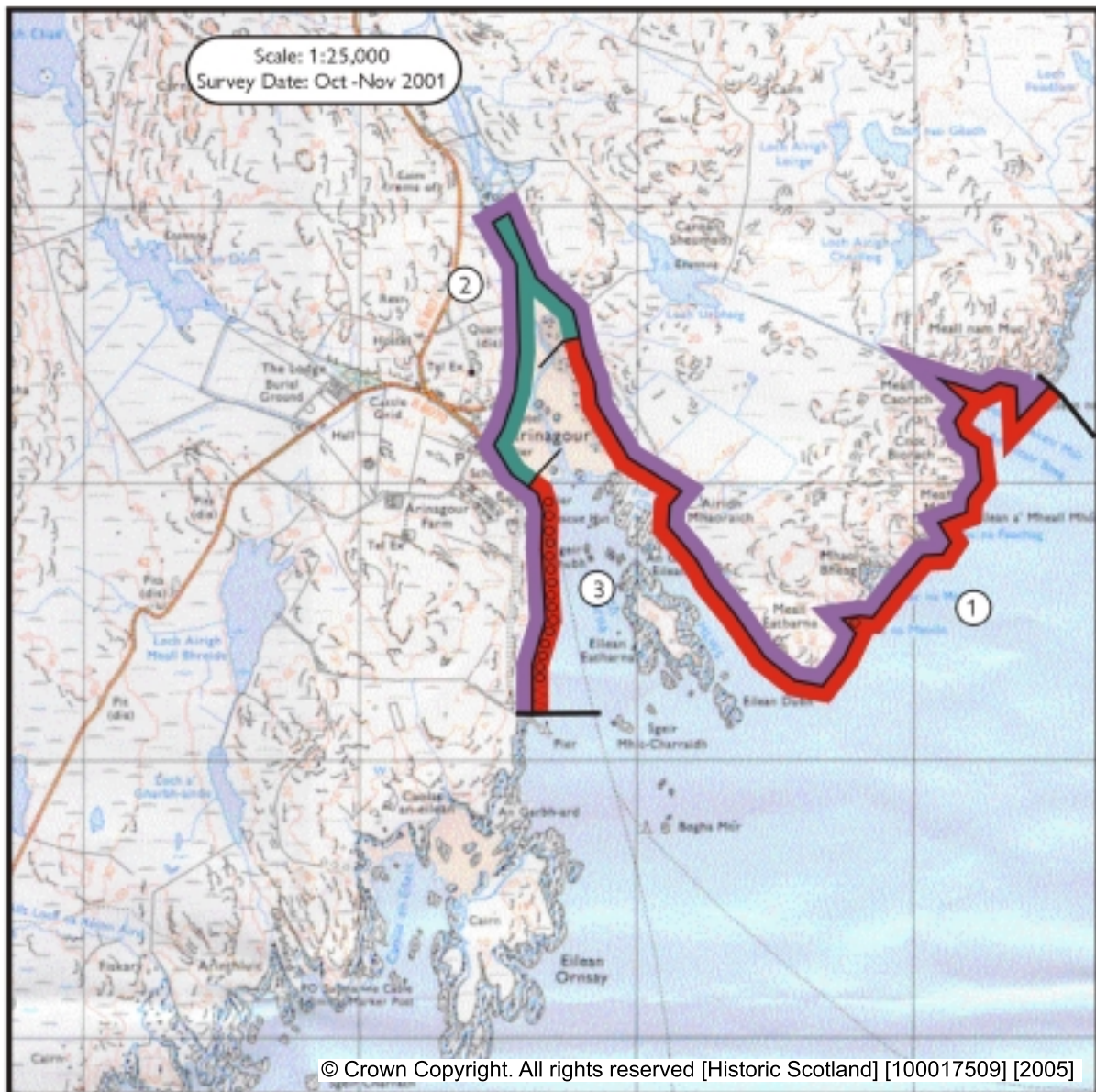
- Built Heritage & Archaeology
- Protected Ancient Monument or area of Designated Wreck
 - Monument formally proposed by Historic Scotland for scheduling or wreck for designation
 - + Listed Historic Building
 - Undesignated wreck
 - Known ancient monument
 - Site found by this survey
 - Site complex



1. Meall Eatharna
NM 235 563
5.1 Km
Rock platform
Coast edge <5m
Drift/rock interface not generally visible
Coast edge is steeply sloping rock platform.
There is some cobble cover in the small coves which occur along the coast edge. Hinterland is extremely rough and poorly drained. No sign of animal grazing at time of visit

2. Arinagour
NM 225 577
1.7 Km
Salt marsh foreshore
Coast edge <5m
Drift/rock interface not visible
Coast edge in this unit is low lying and level.
Coastal inundation by the sea has created salt marsh here. Hinterland is rough grazing.

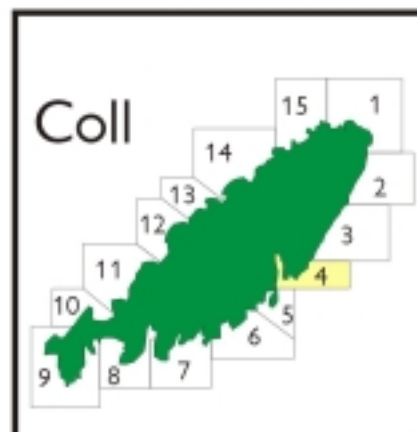
3. Loch Eatharna
NM 226 564
1.2 Km
Rock platform, some cobble cover
Coast edge <5m
Drift/rock interface occasionally visible.
Coast edge is steeply sloping and rocky. There is cobble cover along the foreshore. Part of the coast edge c. <100m long to the north of the modern pier has been disturbed due to the construction of car parking, services etc. associated with the ferry terminal. The hinterland is poorly drained, very poor quality grazing.



- Foreshore**
- Rock platform
 - Mainly sand
 - Mainly alluvial/marine mud
 - Marsh

- Modifiers**
- Low edge <5m
 - Cliff >5m
 - Man made barrier
 - Shingle/storm bank
 - Human disturbance

- Hinterland**
- Drift
 - Drift on visible rock
 - Raised beach etc.
 - Blown sand
 - Glacial sand/gravel
 - Alluvium



1. Meall Eatharna

NM 235 563

5.1 Km

Stable

A rocky coast edge with no signs of recent erosion.

3. Loch Eatharna

NM 226 564

1.2 Km

Stable

A rocky coast edge with no signs of recent erosion.

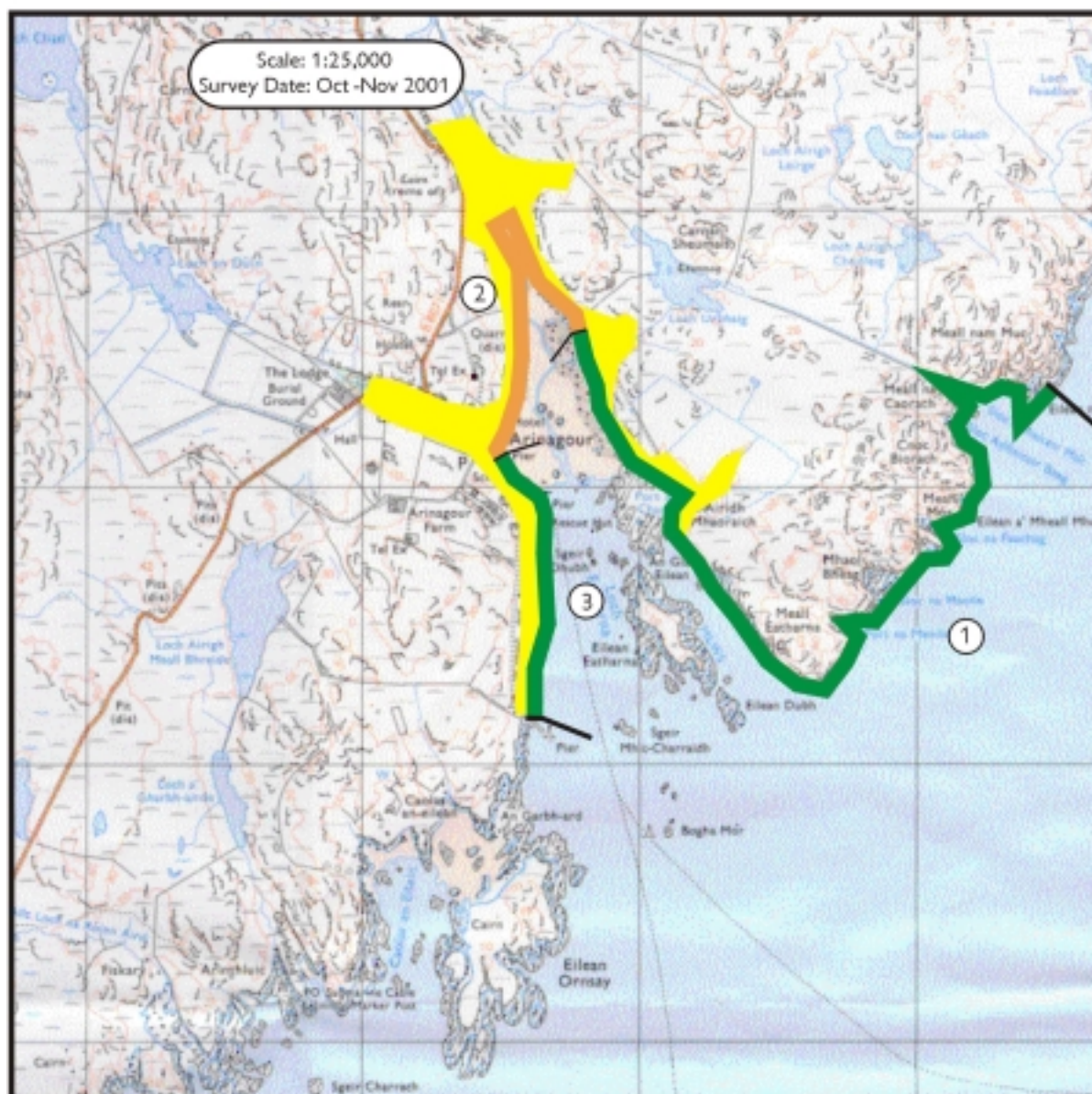
2. Arinagour

NM 225 577

1.7 Km

Eroding or stable

Low lying land at the head of Loch Eatharna is inundated at high tide, causing limited erosion.



- Erosion Class
- Definitely Accreting
 - Accreting or Stable
 - Stable
 - Eroding or Stable
 - Definitely Eroding
 - Accreting and Eroding
 - No access
 - Land below 10m

